

CANFIELD TOWNSHIP

LOT - 4

DIVISION - 4

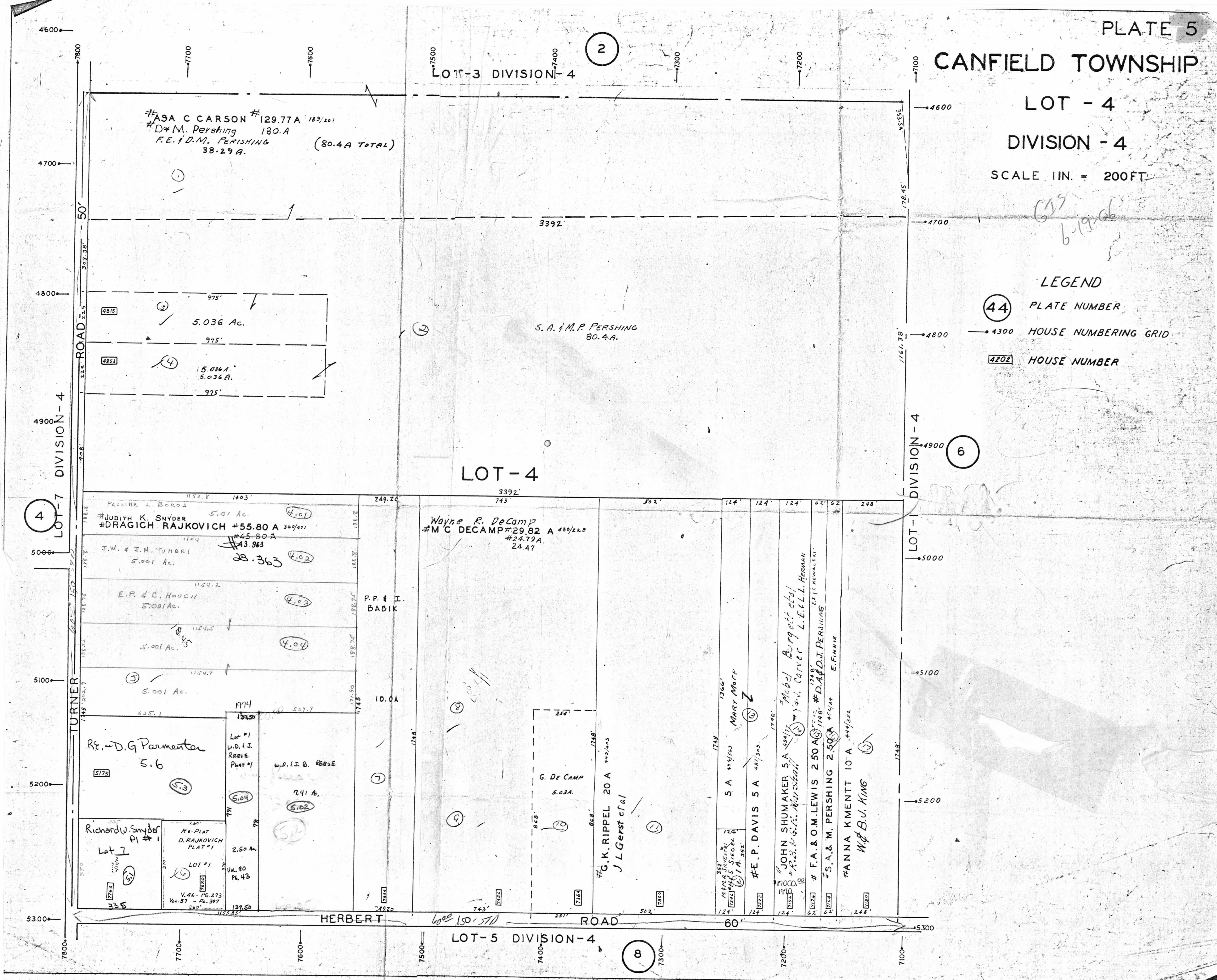
SCALE 1IN. = 200FT

LEGEND

44 PLATE NUMBER

4300 HOUSE NUMBERING GRID

4202 HOUSE NUMBER



#ASA C CARSON #129.77A 183/201
 #D.M. Pershing 130.A
 F.E. & D.M. PERSHING
 38.29 A. (80.4 A TOTAL)

5.036 Ac.
 5.036 A.
 5.036 A.

S.A. & M.P. PERSHING
 80.4 A.

LOT-4

PAULINE L. BOROS
 #JUDITH K. SNYDER
 #DRAGICH RAJKOVICH #55.80 A 369/071
 #45-80 A
 #43.963
 J.W. & J.M. TUMBI
 5.001 Ac.

Wayne R. DeCamp
 #M.C. DECAMP #29.82 A 459/223
 #24.79 A.
 24.47

E.P. & C. HOUGH
 5.001 Ac.
 5.001 Ac.
 5.001 Ac.

P.P. & I.
 BABIK

Re. D.G. Parmenter
 5.6
 Lot #1
 U.D. I.J.
 REASE
 PLAT #1
 W.D. I.S. B. REASE

G. DE CAMP
 5.03 A.
 #G.K. RIPPEL 20 A
 J.L. Gerstetal

Richard W. Snyder
 Lot #1
 RE-PLAT
 D. RAJKOVICH
 PLAT #1
 2.50 Ac.
 U.H. 80
 P. 6.43
 V. 46 - P. 6.273
 Vol. 57 - P. 397
 500'

MARY MOFF
 5 A
 #FE. P. DAVIS 5 A
 #JOHN SHUMAKER 5 A
 #F.A. & O.M. LEWIS 2.50 A
 #S.A. & M. PERSHING 2.50 A
 #ANNA KMENTT 10 A

HERBERT ROAD

LOT-5 DIVISION-4