

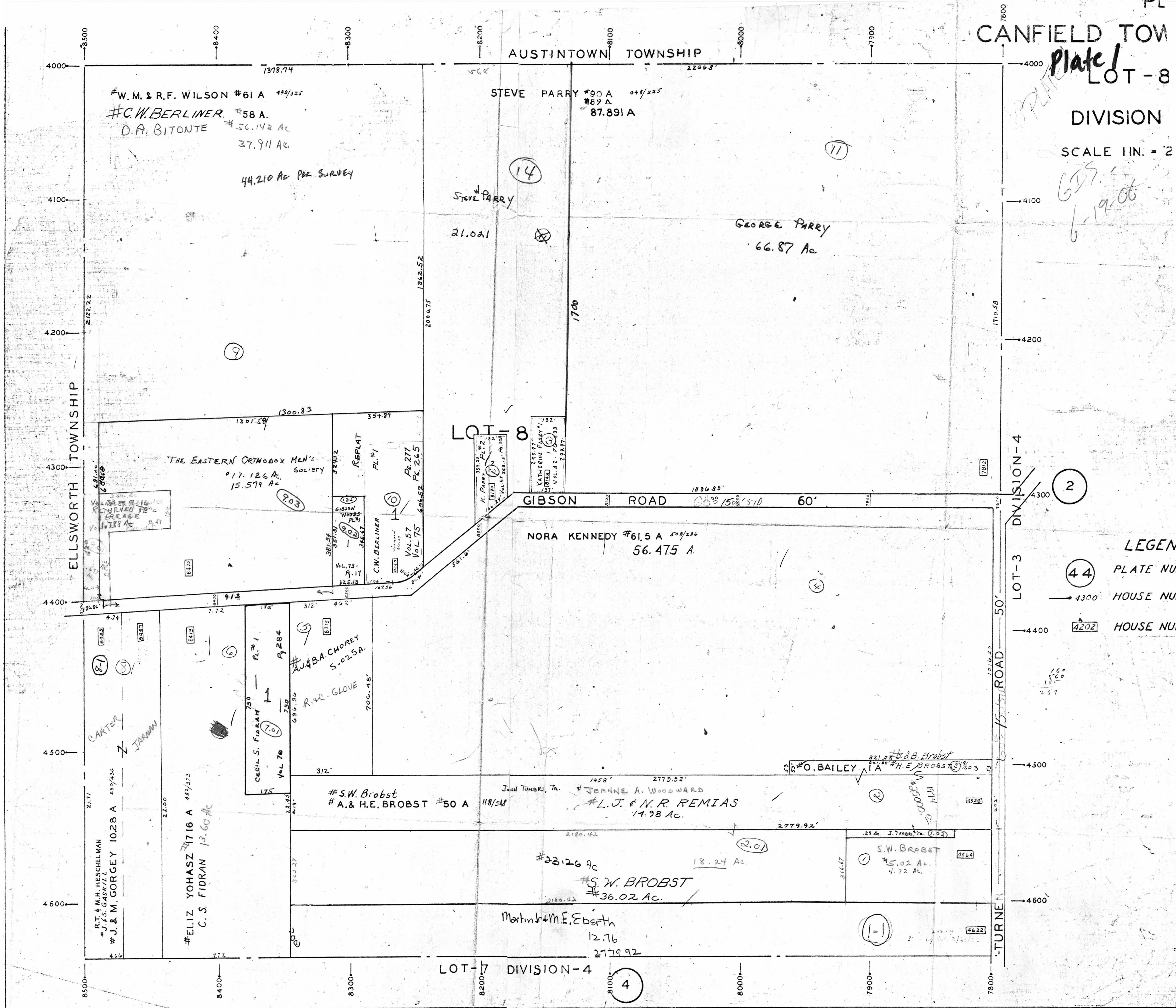
CANFIELD TOW

AUSTINTOWN TOWNSHIP

Plate 1
LOT-8

DIVISION

SCALE 1 IN. = 2



#W.M. & R.F. WILSON #61 A 489/325
 #C.W. BERLINER #58 A
 D.A. BITONTE #56.14 Ac
 37.911 Ac
 44.210 Ac P&R SURVEY

STEVE PARRY #90 A 449/225
 #89 A
 87.891 A

STEVE PARRY
 21.021

GEORGE PARRY
 66.87 Ac

THE EASTERN ORTHODOX MEN'S SOCIETY
 #17.126 Ac
 15.579 Ac

NORA KENNEDY #61.5 A 509/286
 56.475 A

#A. BACHOREY
 5.025 A
 RUC. GLOVE

#S.W. Brobst
 #A. & H.E. BROBST #50 A
 118/548

JEANNE A. WOODWARD
 #L.J. & N.R. REMIAS
 14.98 Ac

#S.W. BROBST
 #36.02 AC.

S.W. BROBST
 #5.02 Ac
 4.73 Ac

Martin Jr + ME Eberth
 12.76
 2779.92

- LEGEN
- 44 PLATE NU.
 - 4300 HOUSE NU.
 - 4202 HOUSE NU.

6-19-06

100
150
257