

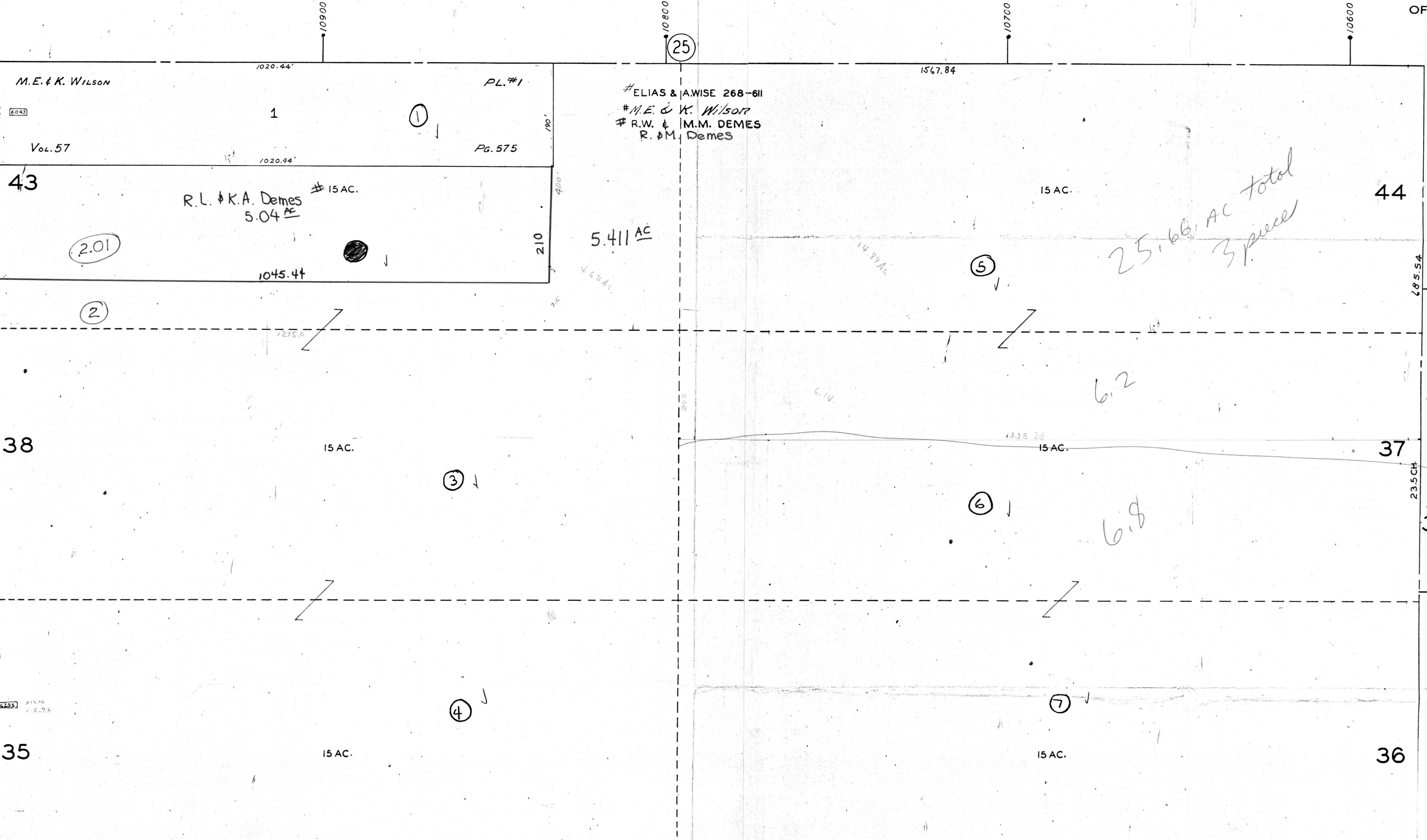
655
7-18-46

PLATE 51-N
SECTION NO. 13
NORTH HALF
ELLSWORTH CENTRE

OFFICE OF COUNTY ENGINEER
MAHONING COUNTY COURT HOUSE
YOUNGSTOWN, OHIO
JULY 1946

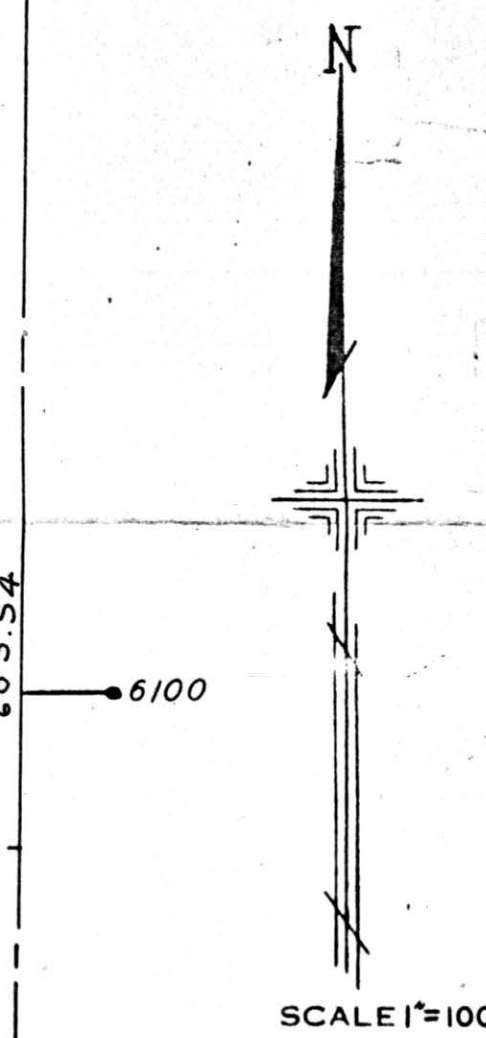
6000
11000

50 FT.
ROAD
WARREN
SALEM



50 NORTH HALF

50 SOUTH HALF



- LEGEND**
- 33 INDICATES PLATE NUMBER
 - 37 INDICATES LOT NUMBER
 - 4700 HOUSE NUMBERING
 - 4170 HOUSE NUMBER
 - 6200

6300
11000

6300