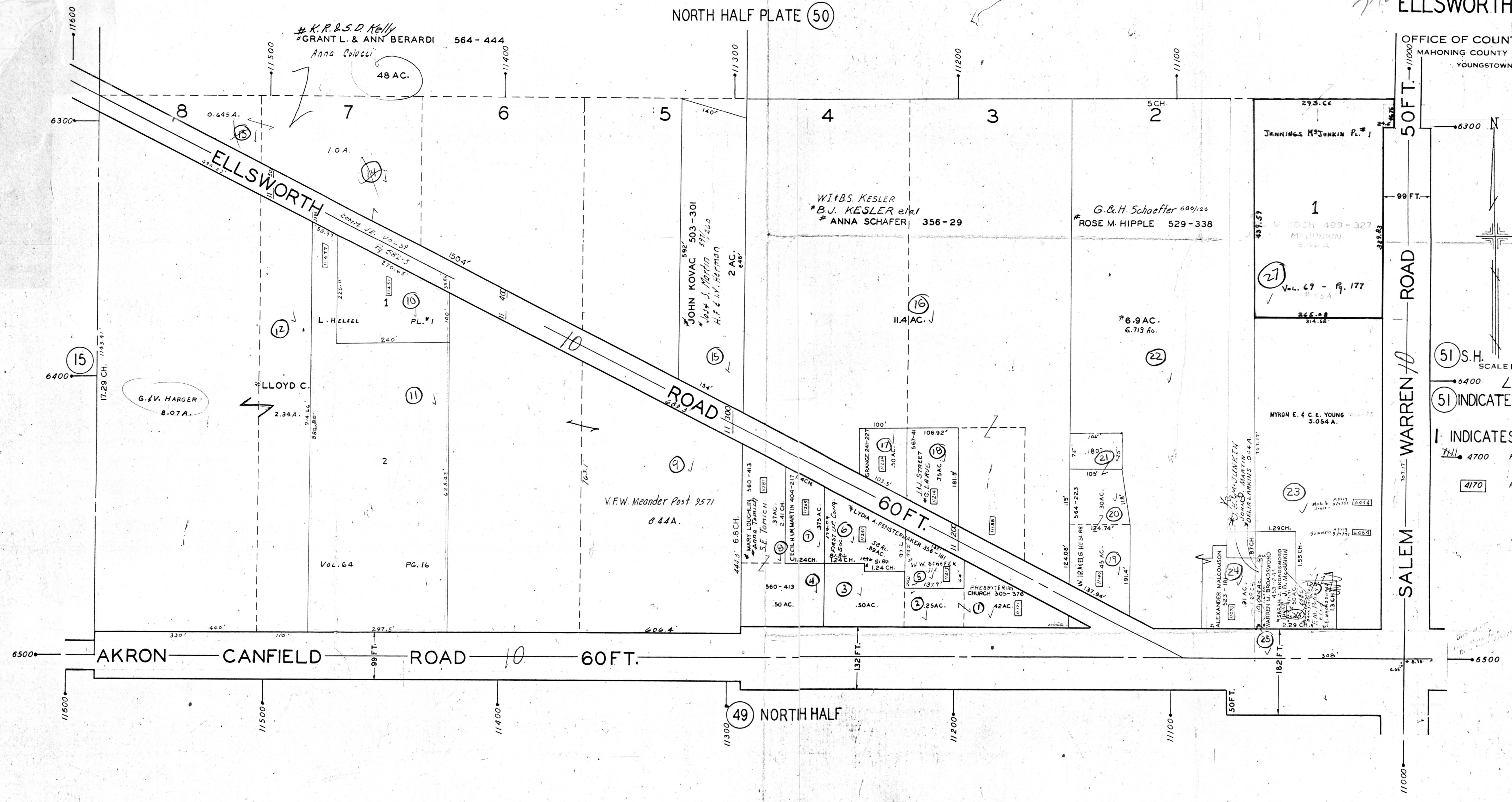


h.w.
 Owner
 12, 13, 14,
 24, 25
 689 db
 790

PLATE 50-S
SECTION NO. 13
SOUTH HALF
ELLSWORTH CENTRE

NORTH HALF PLATE (50)

OFFICE OF COUNTY ENGINEER
 MAHONING COUNTY COURT HOUSE
 YOUNGSTOWN, OHIO



SCALE 1"=100 FT.
LEGEND
 (51) INDICATES PLATE NUMBER
 I INDICATES LOT NUMBER
 4700 HOUSE NUMBERING GRID
 4170 HOUSE NUMBER

5024
 5024