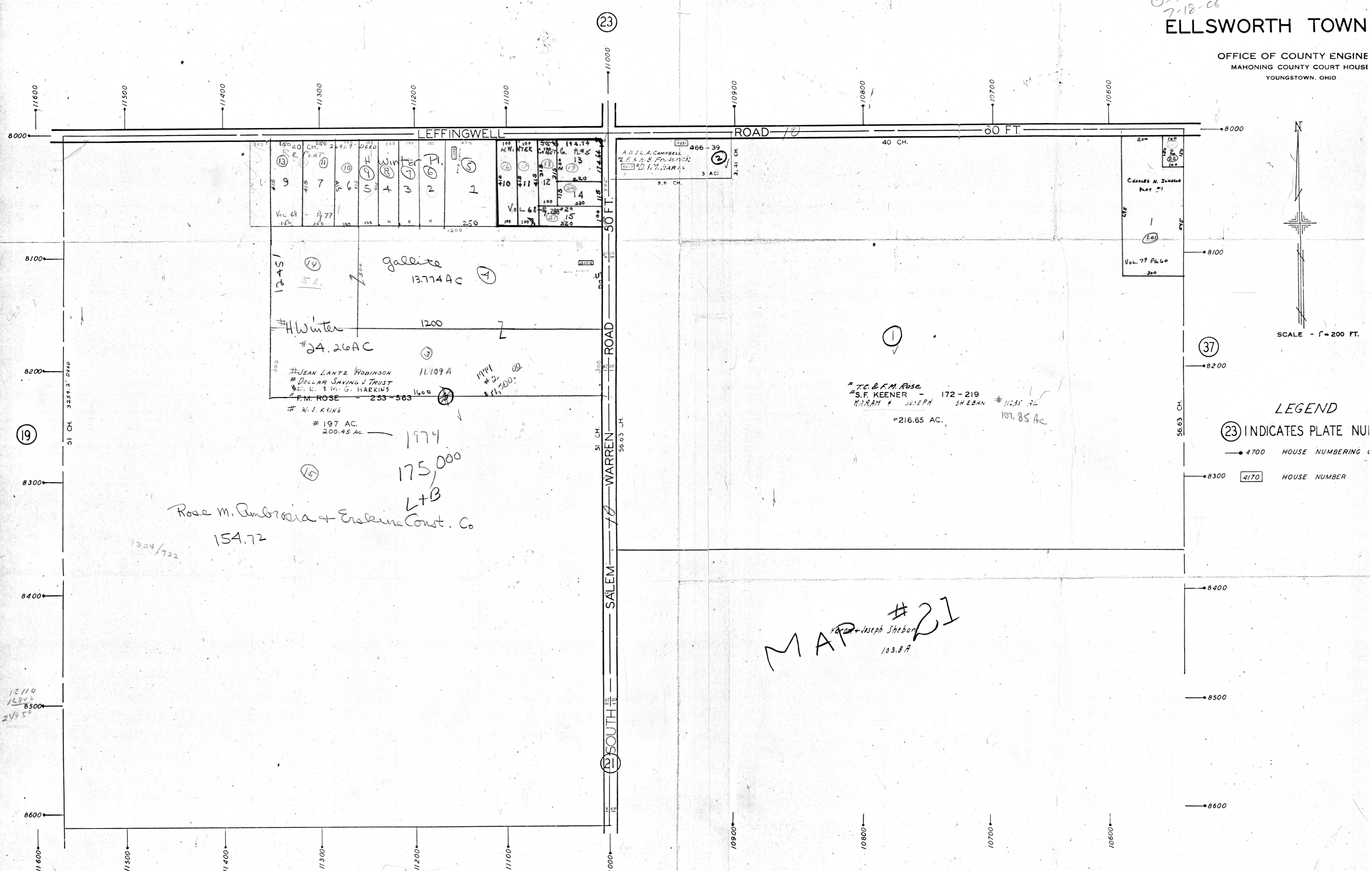


Check
3
625
7-18-06
PLATE 22
SECTION No. 3
NORTH HALF
ELLSWORTH TOWN

OFFICE OF COUNTY ENGINE
MAHONING COUNTY COURT HOUSE
YOUNGSTOWN, OHIO



SCALE - 1" = 200 FT.

LEGEND
 (23) INDICATES PLATE NUMBER
 → 4700 HOUSE NUMBERING
 → 8300 4170 HOUSE NUMBER

MAP #21
 Joseph Sheban
 103.87 A

Rose M. Ambrosia + Erskine Const. Co.
 154.72
 1324/722