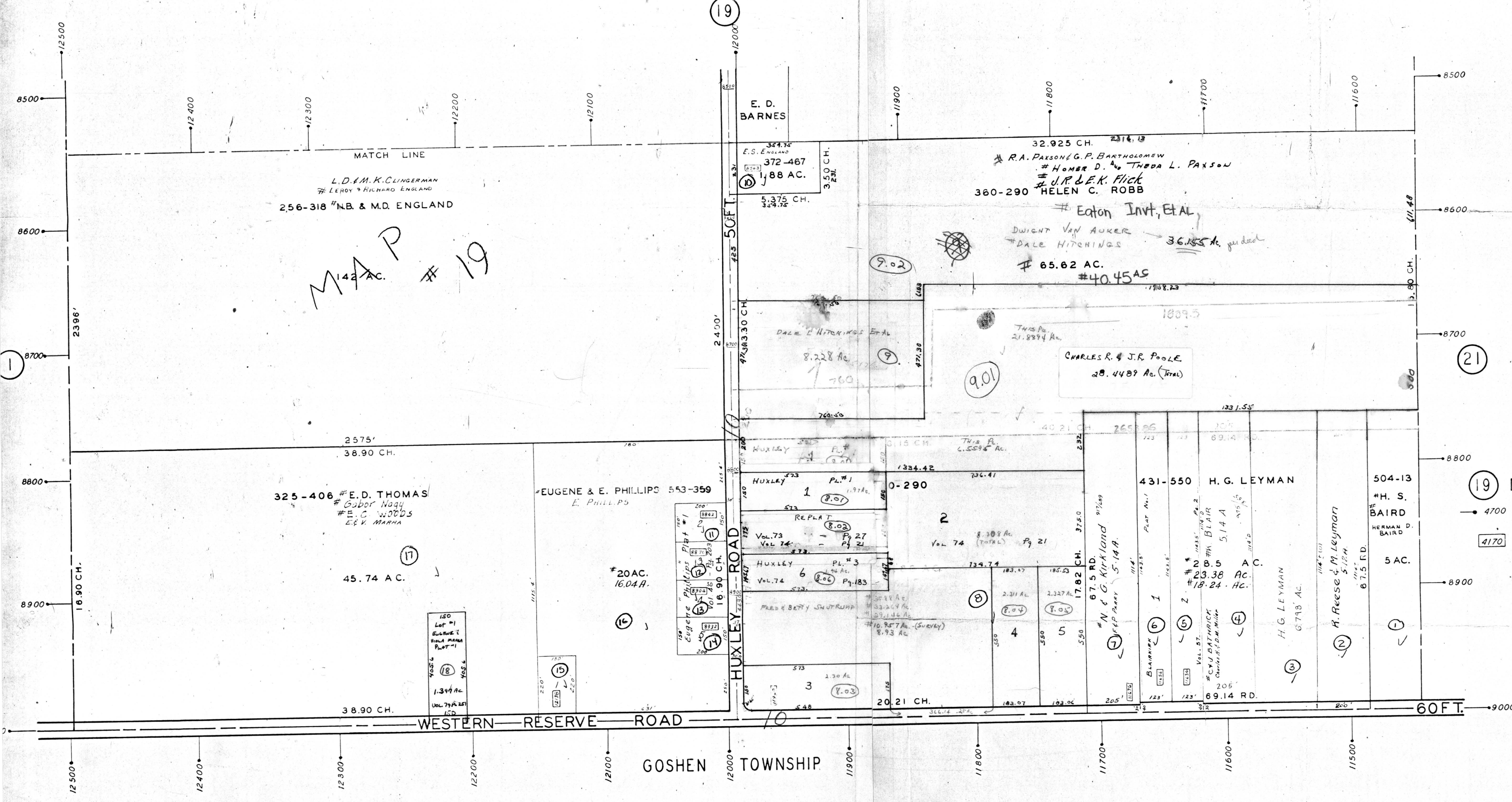
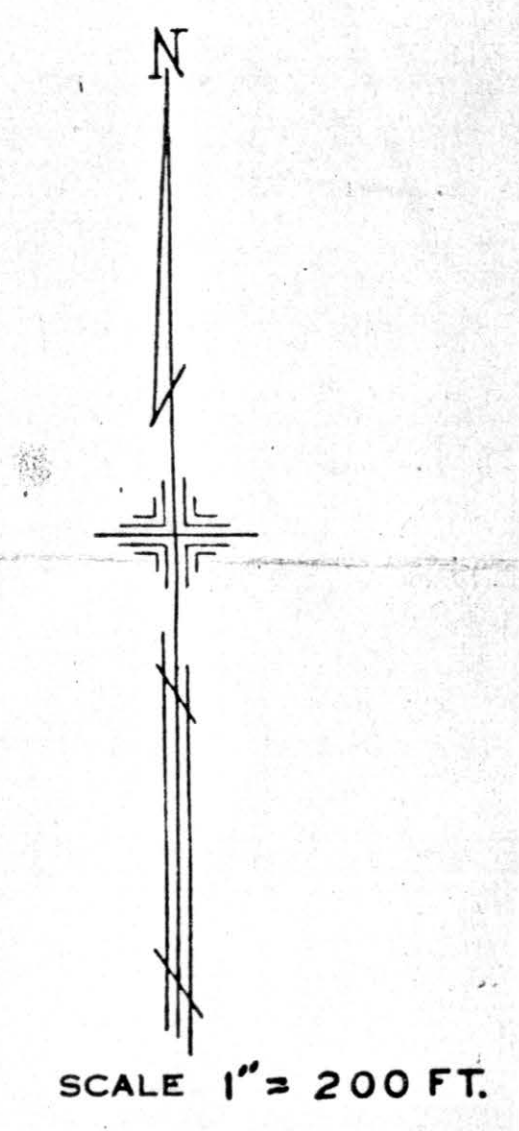


PLATE 20
 SECTION No. 2
 SOUTH HALF
 ELLSWORTH TOWNS

OFFICE OF COUNTY ENGINE
 MAHONING COUNTY COURT HOUSE
 YOUNGSTOWN, OHIO

Notes
 For
 GTS
 7-18-06



WESTERN RESERVE ROAD

GOSHEN TOWNSHIP