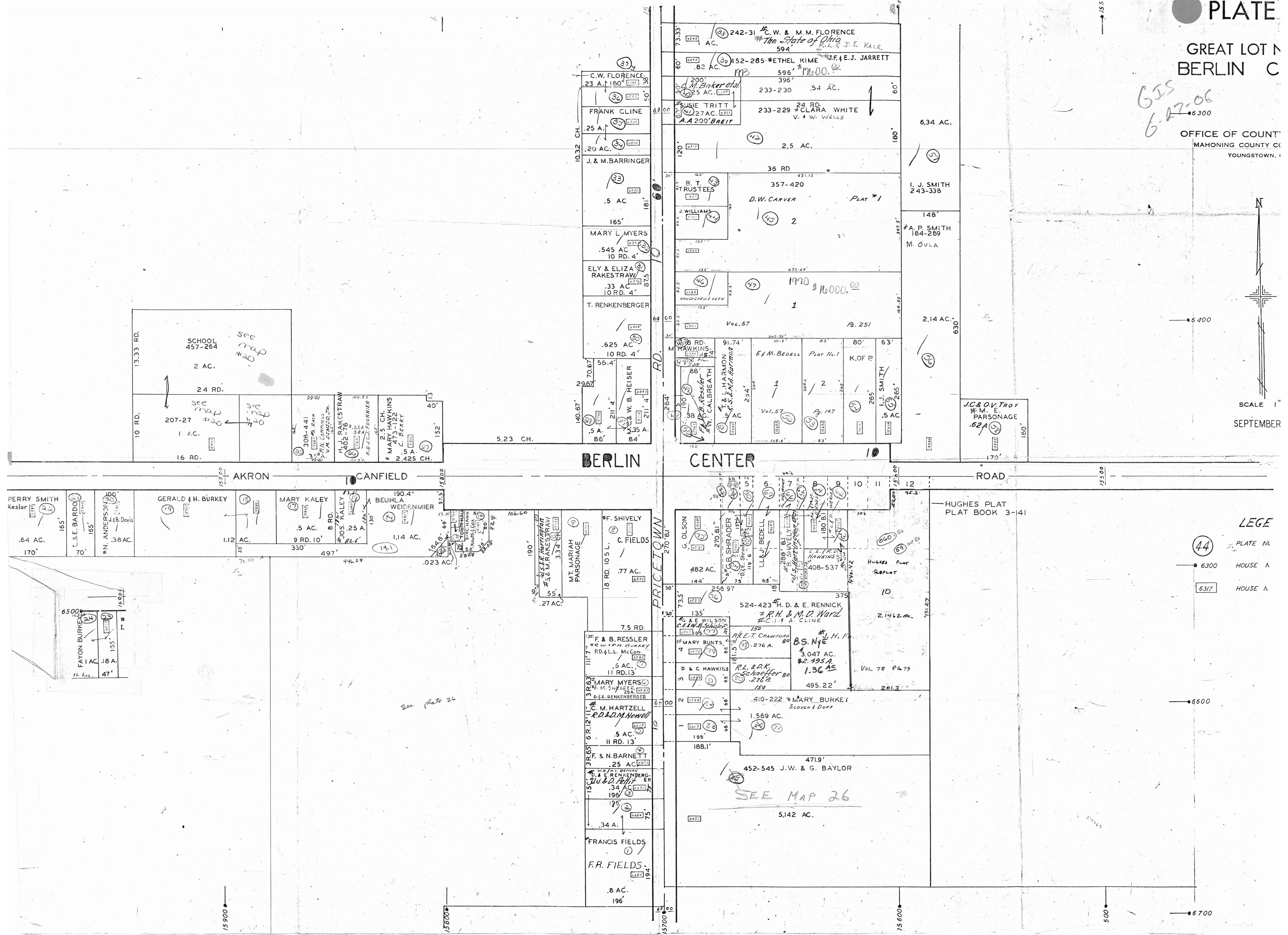


**PLATE**  
**GREAT LOT N**  
**BERLIN C**

655  
 6-27-06  
 6300

OFFICE OF COUNTY  
 MAHONING COUNTY CO  
 YOUNGSTOWN, OH



**LEGE**  
 44 PLATE NO  
 6300 HOUSE A  
 6317 HOUSE A

6600

6700

PERRY SMITH Keslar  
 .64 AC.  
 170'

L. & E. BARDON  
 165'

N. ANDERSON  
 165'

J. B. Davis  
 .38 AC.

GERALD & H. BURKEY  
 1.12 AC.

MARY KALEY  
 .5 AC.  
 9 RD. 10'

MOS. KALEY  
 .25 A.  
 8 RD.

BEUHLA WEIDENMIER  
 190.4'  
 1.14 AC.

0.23 AC.

106.60

190'

55'

27 AC.

MT. MARIAH PARSONAGE

18 RD. 10 S.  
 .77 AC.

F. SHIVELY  
 C. FIELDS

7.5 RD.

F. & B. RESSLER  
 R. W. & H. BURKEY  
 RD. & L. L. McCon  
 .5 AC.  
 11 RD. 13

MARY MYERS  
 M. M. SHAFER  
 D. E. RENKENBERGER

C. M. HARTZELL  
 R. D. & M. NEWELL  
 .5 AC.  
 11 RD. 13'

F. & N. BARNETT  
 .25 AC.

M. L. BARTMAN  
 D. E. RENKENBERGER  
 D. D. BARTMAN  
 .34 AC.  
 196'

195'

.34 A.

FRANCIS FIELDS  
 F. F. FIELDS  
 194'

.8 AC.  
 196'

HUGHES PLAT  
 PLAT BOOK 3-41

G. OLSON  
 482 AC.  
 144'

B. SHRADER  
 270.81'

L. & J. BEDELL  
 135'

524-423 H. D. & E. RENNICK  
 R. H. & M. O. WARD  
 C. I. & A. CLINE

MARY BUNTS  
 R. E. T. Crawford  
 .276 A.

D & C HAWKINS  
 R. L. & D. K. Schaeffer  
 .276 A.

MARY BURKEY  
 410-222  
 Slouch & Duff  
 1.569 AC.

452-545 J. W. & G. BAYLOR  
 SEE MAP 26  
 5.142 AC.

408-537

HUGHES PLAT  
 REPLAT  
 2.142 AC.

375'

180.81'

1180.81'

L. E. FREDERICK  
 HAWKINS  
 .3047 AC.  
 #2-195A  
 1.36 AC

495.22'

201.3'

188.1'

471.9'

510.27'

95.3'

150.00'

155.00'

160.00'

165.00'

170.00'

175.00'

180.00'

185.00'

190.00'

195.00'

200.00'

205.00'

210.00'

215.00'

220.00'

225.00'

230.00'

235.00'

240.00'

245.00'

250.00'

255.00'

260.00'

265.00'

270.00'

275.00'

280.00'

285.00'

290.00'

295.00'

300.00'

305.00'

310.00'

315.00'

320.00'

325.00'

330.00'

335.00'

340.00'

345.00'

350.00'

355.00'

360.00'

365.00'

370.00'

375.00'

380.00'

385.00'

390.00'

395.00'

400.00'

405.00'

410.00'

415.00'

420.00'

425.00'

430.00'

435.00'

440.00'

445.00'

450.00'

455.00'

460.00'

465.00'

470.00'

475.00'

480.00'

485.00'

490.00'

495.00'

500.00'

505.00'

510.00'

515.00'

520.00'

525.00'

530.00'

535.00'

540.00'

545.00'

550.00'

555.00'

560.00'

565.00'

570.00'

575.00'

580.00'

585.00'

590.00'

595.00'

600.00'

605.00'

610.00'

615.00'

620.00'

625.00'

630.00'

635.00'

640.00'

645.00'

650.00'

655.00'

660.00'

665.00'

670.00'

675.00'

680.00'

685.00'

690.00'

695.00'

700.00'

705.00'

710.00'

715.00'

720.00'

725.00'

730.00'

735.00'

740.00'

745.00'

750.00'

755.00'

760.00'

765.00'

770.00'

775.00'

780.00'

785.00'

790.00'

795.00'

800.00'

805.00'

810.00'

815.00'

820.00'

825.00'

830.00'

835.00'

840.00'

845.00'

850.00'

855.00'

860.00'

865.00'

870.00'

875.00'

880.00'

885.00'

890.00'

895.00'

900.00'

905.00'

910.00'

915.00'

920.00'

925.00'

930.00'

935.00'

940.00'

945.00'

950.00'

955.00'

960.00'

965.00'

970.00'

975.00'

980.00'

985.00'

990.00'

995.00'

1000.00'

See plate 26