

SCALE  
1" = 100'  
REVISED FEB. 1951

203

LEGEND

(21) PLATE NUMBER

→ 4700 HOUSE NUMBERING GRID

→ 9600 4170 HOUSE NUMBER

5300  
19000  
9400  
9500  
9600  
9700  
18900  
18800  
18700  
18600  
18500

60'-ROAD  
60'-STREET  
TWELFTH  
SEC. 3  
SEC. 2

201

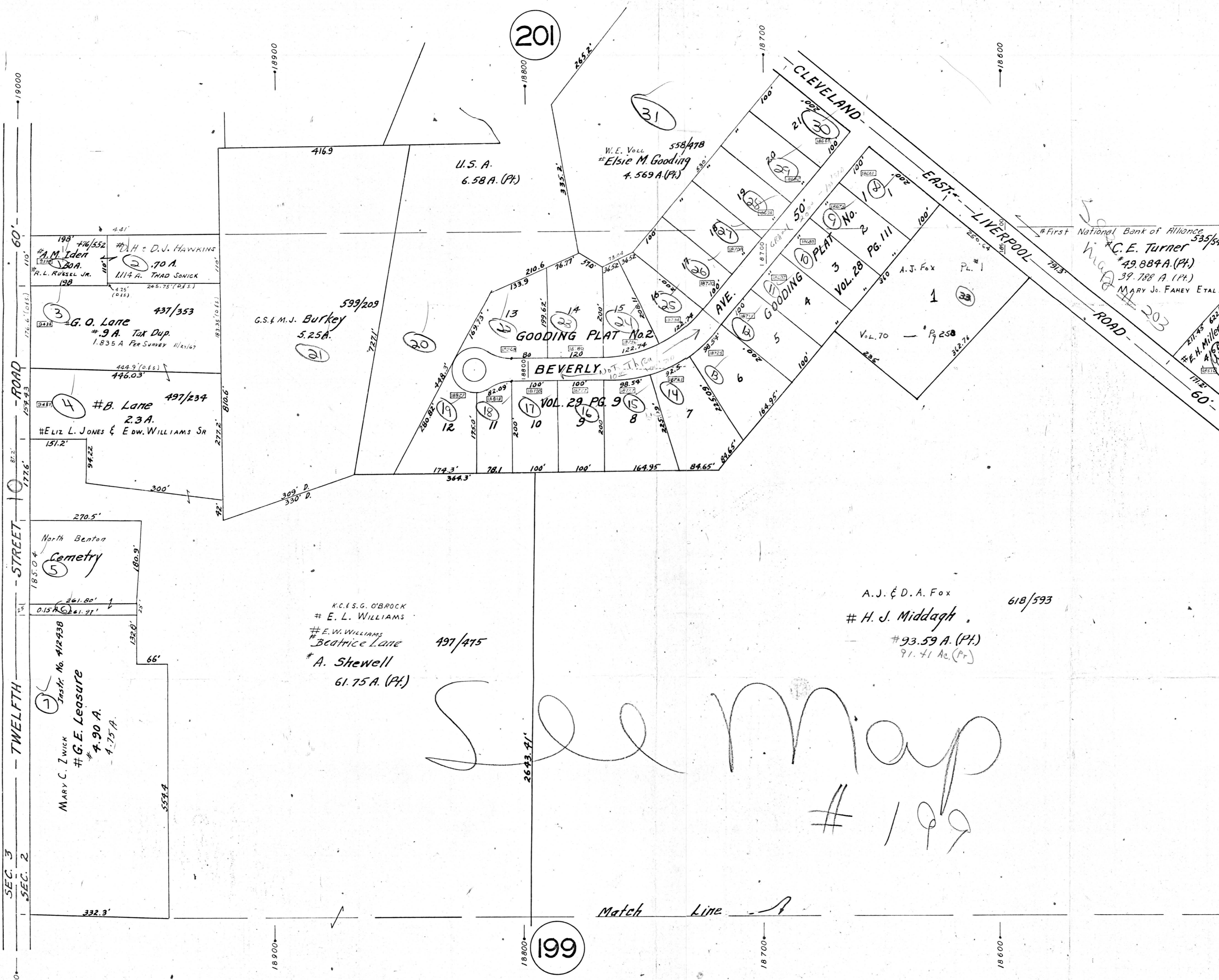
31

197

See map # 199

Match Line

199



Handwritten notes and signatures: #First National Bank of Alliance, C.E. Turner, #49,884 A. (Pt.), 39,788 A. (Pt.), MARY JO. FAHEY ET AL., #E.H. Miller, C.T.E. Manypenny.