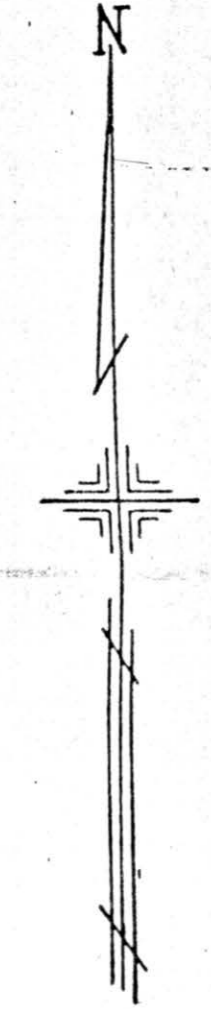


OFFICE OF COUNTY ENGINEER
MAHONING COUNTY COURT HOUSE
YOUNGSTOWN, OHIO



SCALE
1" = 100'

LEGEND

(21)

PLATE NUMBER

→ 4700

HOUSE NUMBERING GRID

4170

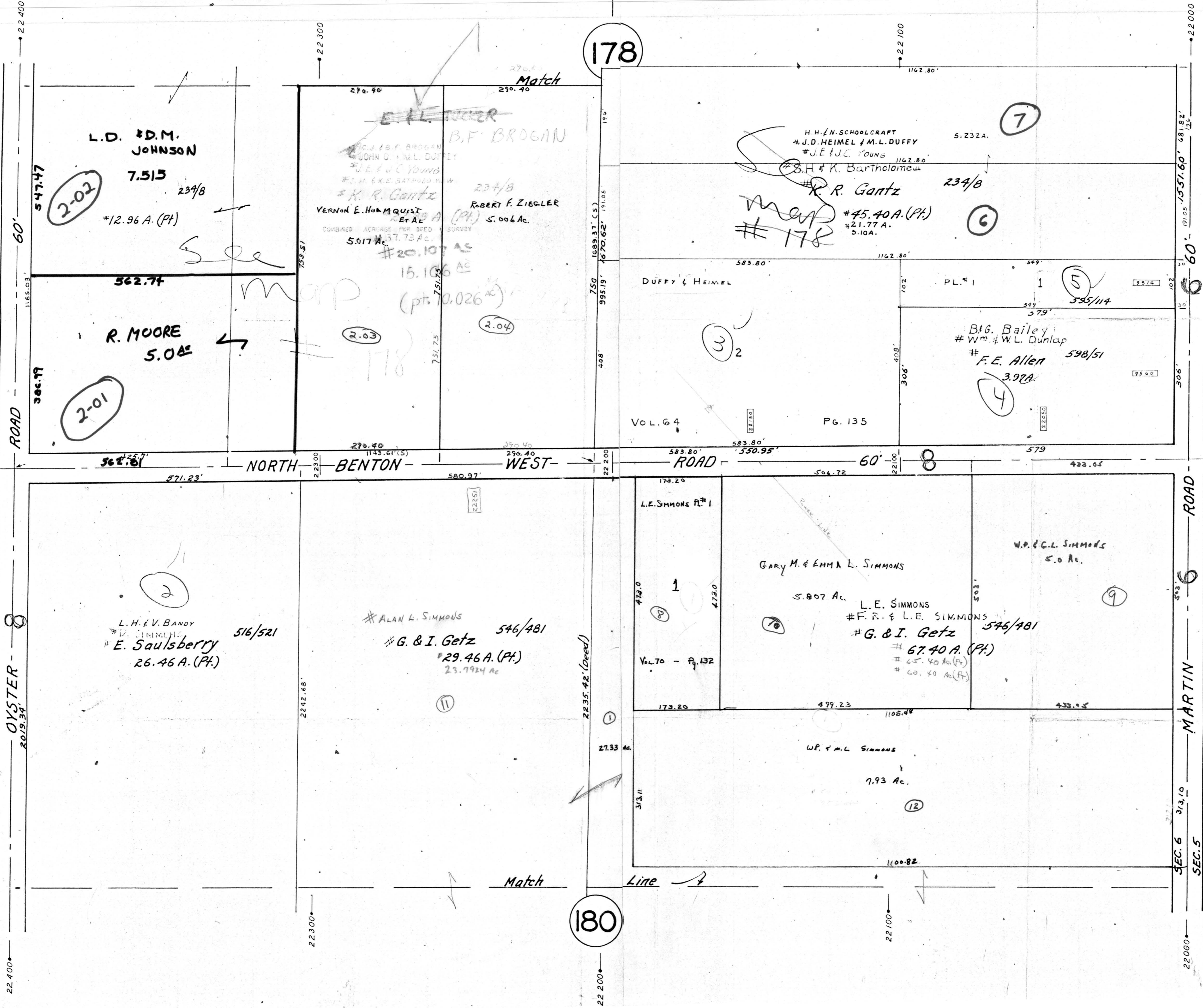
HOUSE NUMBER

178

176

182

180



ROAD 60' 1165.03' 547.47' 386.77'

ROAD 60' 2019.34' 22400'

NORTH BENTON WEST ROAD

ROAD 60' 1531.60' 306' 313.10' 22000'

MARTIN SEC. 6 313.10' SEC. 5

Line

Match

Match

See

MAPP

Handwritten scribbles and notes

2-02

2-01

7.513

#12.96 A. (Pt)

R. MOORE 5.08

L.H. & V. Bandy
E. Saulsberry
26.46 A. (Pt.) 516/521

2.03

2.04

ALAN L. SIMMONS
G. & I. Getz
29.46 A. (Pt.)
23.7924 Ac 546/481

B.F. BROGAN
J.D. HEIMEL & M.L. DUFFY
J.E. & J.C. YOUNG
K.R. Gantz
VERNON E. HORNQUIST
ET AL
5.017 A.
20.107 AS
15.106 AC
(Pt. 10.026 A.)
ROBERT F. ZIEGLER
234/B
S. 006 AC.

L.E. SIMMONS #1

GARY M. & EMMA L. SIMMONS

5.807 Ac.

L.E. SIMMONS
F.R. & L.E. SIMMONS
G. & I. Getz
546/481

67.40 A. (Pt.)
45.40 Ac (Pt.)
60.40 Ac (Pt.)

W.P. & G.L. SIMMONS
5.0 Ac.

W.P. & M.L. SIMMONS
7.93 Ac.

DUFFY & HEIBEL

PL. # 1

B.G. Bailey
Wm. & W.L. Dunlap
F.E. Allen
598/51
3.978 A.

PG. 135

VOL. 64

L.E. SIMMONS #1

GARY M. & EMMA L. SIMMONS

5.807 Ac.

L.E. SIMMONS
F.R. & L.E. SIMMONS
G. & I. Getz
546/481

67.40 A. (Pt.)
45.40 Ac (Pt.)
60.40 Ac (Pt.)

W.P. & G.L. SIMMONS
5.0 Ac.

W.P. & M.L. SIMMONS
7.93 Ac.

DUFFY & HEIBEL

PL. # 1

B.G. Bailey
Wm. & W.L. Dunlap
F.E. Allen
598/51
3.978 A.

PG. 135

VOL. 64

L.E. SIMMONS #1

GARY M. & EMMA L. SIMMONS

5.807 Ac.

L.E. SIMMONS
F.R. & L.E. SIMMONS
G. & I. Getz
546/481

67.40 A. (Pt.)
45.40 Ac (Pt.)
60.40 Ac (Pt.)

W.P. & G.L. SIMMONS
5.0 Ac.

W.P. & M.L. SIMMONS
7.93 Ac.