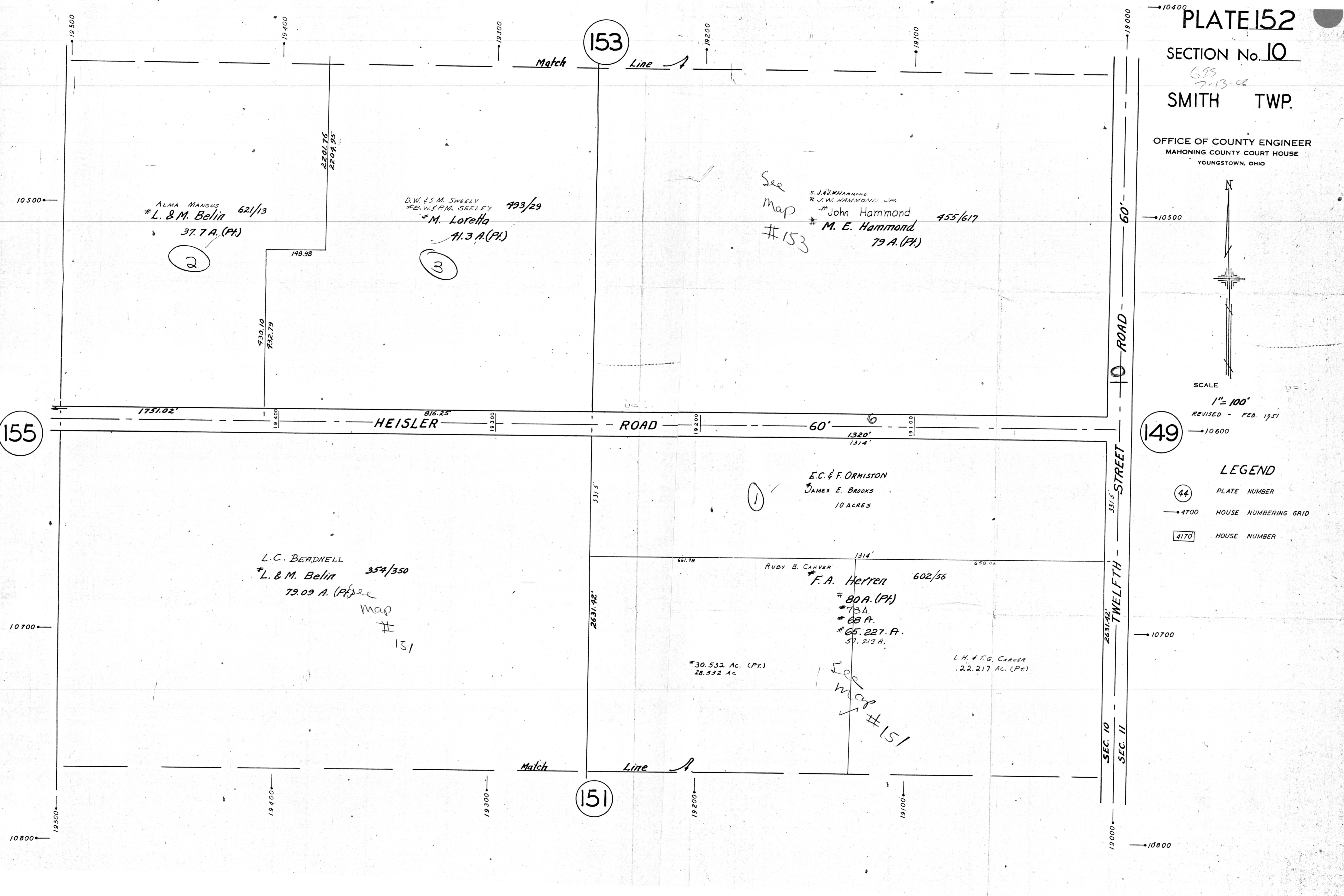


OFFICE OF COUNTY ENGINEER  
MAHONING COUNTY COURT HOUSE  
YOUNGSTOWN, OHIO



SCALE  
1" = 100'  
REVISED - FEB. 1951

- LEGEND
- (44) PLATE NUMBER
  - 4700 HOUSE NUMBERING GRID
  - 4170 HOUSE NUMBER



153

151

149

155

ALMA MANGUS  
# L. & M. Belin 621/13

37.7 A. (Pt.)

(2)

D.W. & S.M. SWEELY 493/29  
# B.W. & P.M. SEELEY  
# M. Loretta

41.3 A. (Pt.)

(3)

See  
map  
# 153

S. J. & M. HAMMOND  
# J. W. HAMMOND JR.  
# John Hammond 455/617  
# M. E. Hammond 79 A. (Pt.)

E.C. & F. ORMISTON  
# JAMES E. BROOKS  
10 ACRES

(1)

L.C. BEADNELL  
# L. & M. Belin 354/350

73.09 A. (Pt.)

See  
map  
# 151

RUBY B. CARVER  
# F.A. Herrer 602/56

# 80 A. (Pt.)  
# 73 A.  
# 68 A.  
# 65.227 A.  
57.213 A.

# 30.532 Ac. (Pt.)  
28.532 Ac.

L.H. & T.G. CARVER  
22.217 Ac. (Pt.)

Match

Line

Match

Line

ROAD

ROAD

STREET

TWELFTH

SEC. 10  
SEC. 11

