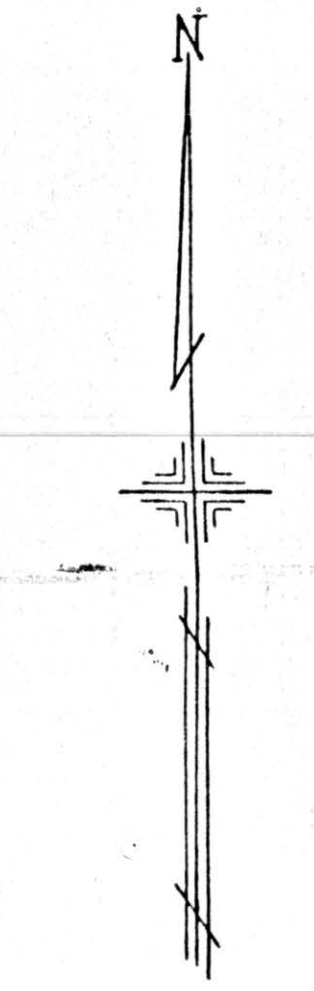


PLATE 71

SECTION No. 24
615
7-12-06
SMITH TWP.

OFFICE OF COUNTY ENGINEER
MAHONING COUNTY COURT HOUSE
YOUNGSTOWN, OHIO

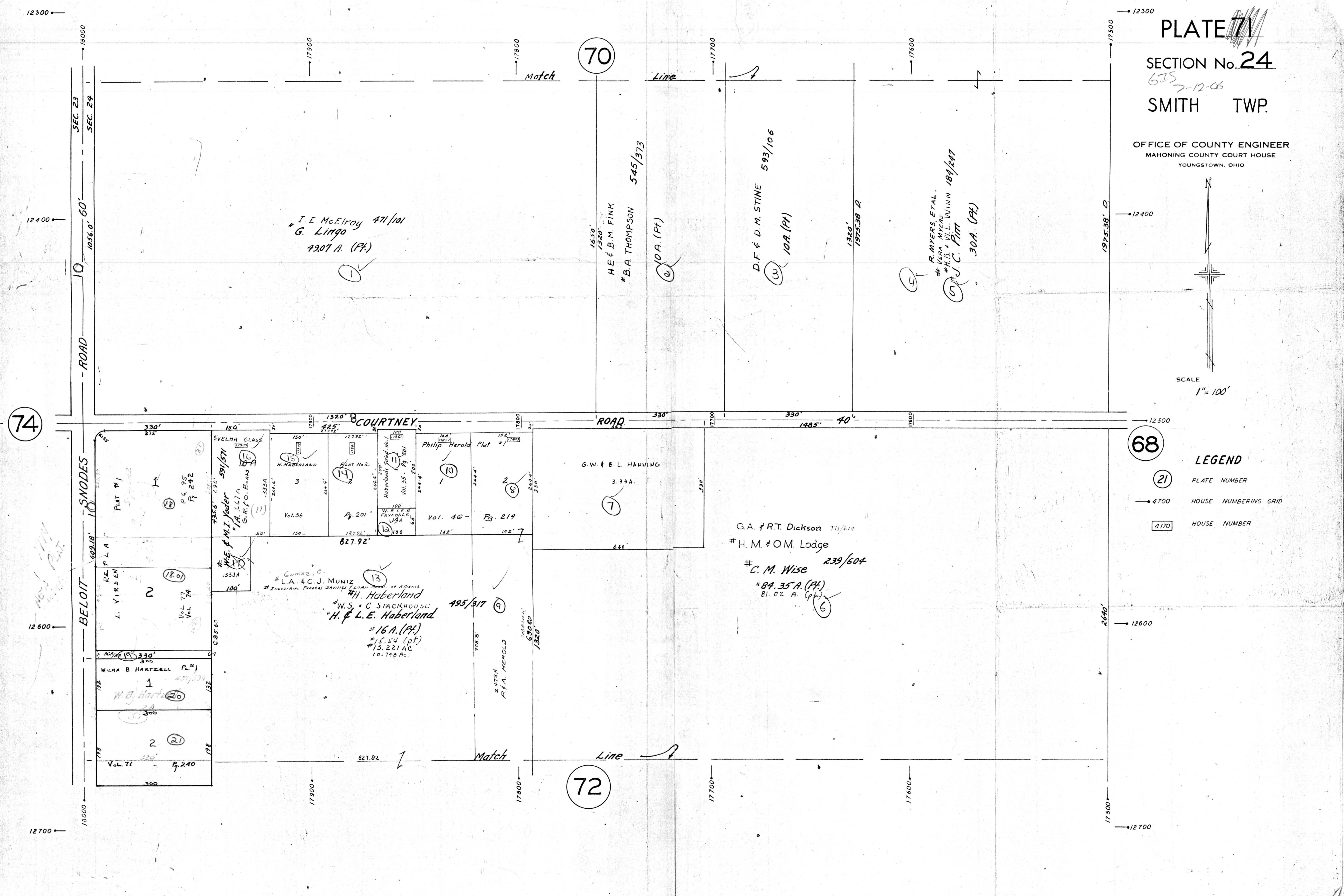


SCALE
1" = 100'

68

LEGEND

- (21) PLATE NUMBER
- 4700 HOUSE NUMBERING GRID
- [4170] HOUSE NUMBER



70

74

68

72

Match

Line

Match

Line

SEC. 23
SEC. 24

1056.0' 60'

ROAD

SNODES

BELOIT

I.E. McElroy 471/101
G. Limgo
49.07 A. (Pt.)

1650'
1320'
H.E. & B.M. FINK
B.A. THOMPSON 545/373

D.F. & D.M. STINE 593/106
10A. (Pt.)

R. MYERS, ETAL.
VERA MYERS
H.B. & W.L. WINN 189/247
J.C. Pitt
30A. (Pt.)

COURTNEY ROAD

ROAD

G.W. & B.L. HAWNING

G.A. & R.T. Dickson 711/614
H.M. & O.M. Lodge
C.M. Wise 239/604
84.35 A. (Pt.)
81.02 A. (Pt.)

Comoz, C.
L.A. & C.J. MUNIZ
INDUSTRIAL FEDERAL SAVINGS
H. Haberland
W.S. & C. STACKHOUSE
H. & L.E. Haberland
16A. (Pt.)
15.54 (Pt.)
13.221 AC.
10.748 Ac.

VELMA GLASS 591/571
M.I. Yoder
H.A. UCTA
G.R. O. BEAS
H.E. & M.I. Yoder
333A
100

PLAT #1
PLAT #2
PLAT #3
PLAT #4
PLAT #5
PLAT #6
PLAT #7
PLAT #8
PLAT #9
PLAT #10
PLAT #11
PLAT #12
PLAT #13
PLAT #14
PLAT #15
PLAT #16
PLAT #17
PLAT #18
PLAT #19
PLAT #20
PLAT #21
PLAT #22
PLAT #23
PLAT #24
PLAT #25
PLAT #26
PLAT #27
PLAT #28
PLAT #29
PLAT #30
PLAT #31
PLAT #32
PLAT #33
PLAT #34
PLAT #35
PLAT #36
PLAT #37
PLAT #38
PLAT #39
PLAT #40
PLAT #41
PLAT #42
PLAT #43
PLAT #44
PLAT #45
PLAT #46
PLAT #47
PLAT #48
PLAT #49
PLAT #50

WILMA B. HARTZELL Pl. #1
409/539
2473A
F.A. MEROLD
2473A

W.B. North
24
300

Vol. 77
240