



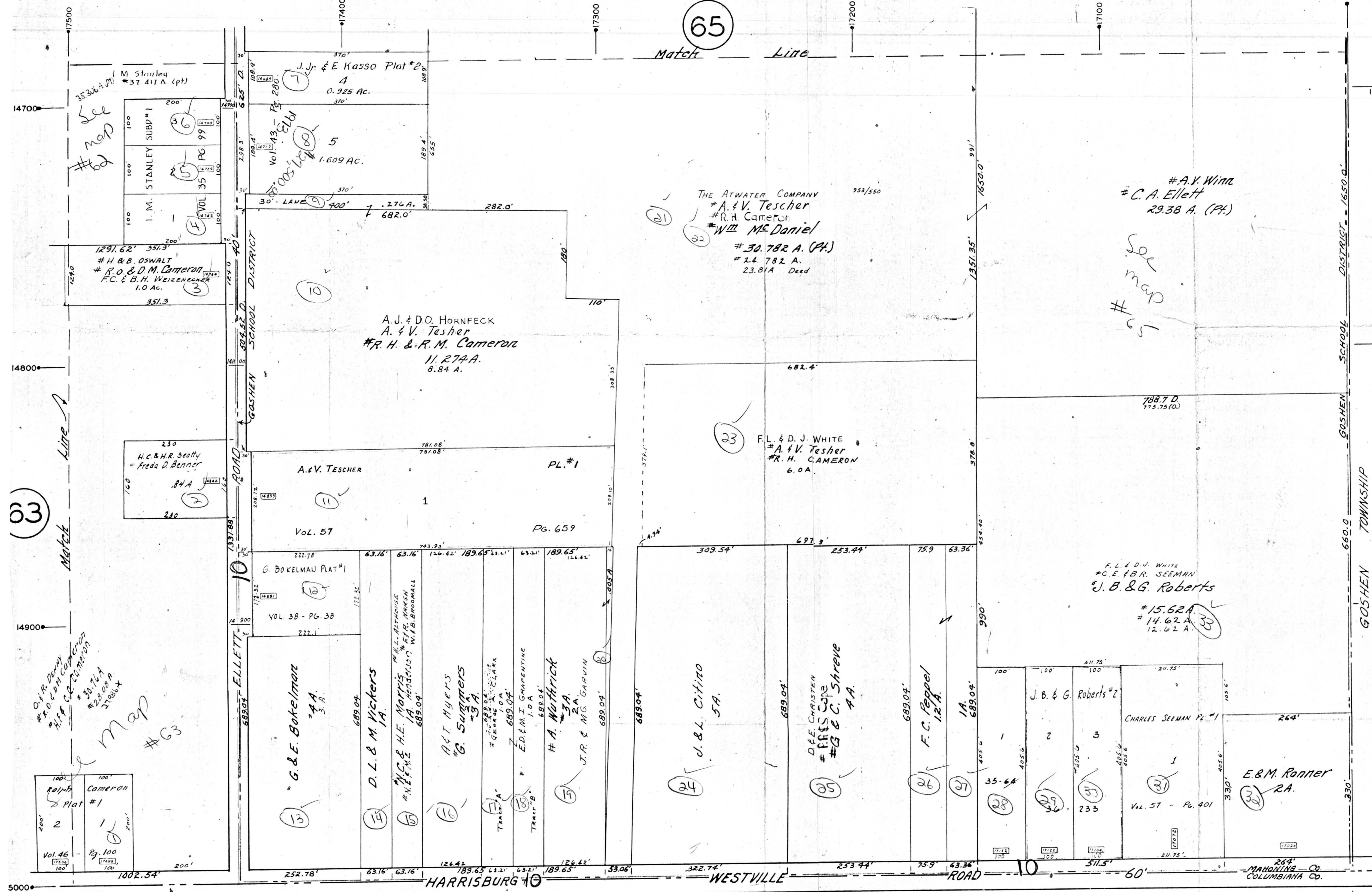
SCALE
1" = 100'
REVISED - FEB. 1951

LEGEND

- (21) PLATE NUMBER
- 4700 HOUSE NUMBERING GRID
- 4170 HOUSE NUMBER

65

63



See map #62

Match Line

See map #63

#A.V. Winn
#C.A. Ellett
29.38 A. (Plat)

See map #65

F.L. & D.J. White
#C.E. & B.R. Seeman
#J.B. & G. Roberts
#15.62 A
#14.62 A
#12.62 A

See map #63
Vol. 46
Pg. 100
Cameron
Plat #1

STANLEY SUBD #1
I.M. STANLEY
VOL. 99
PG. 35

#H. & B. OSWALT
#R.O. & D.M. CAMERON
#C. & B.H. WEIZENBERG
1.0 AC.

H.C. & H.R. BOOTH
#Freda D. Benner
84 A

Vol. 38 - Pg. 38

G. & L. Bokelmau
#A.A.
3 A.

D.L. & M. Vickers
#A.A.
JA.

#H.C. & H.E. MORRIS
#N.E. & H.E. MORRIS
#A.A.
W.F.S. BROADMALL
689.04'

ACT MYERS
#G. SWINNERS
#A.A.
3 A.

#E.D. & M.I. GRAPENTINE
#A.A.
1.0 A.

#A. NATHRICK
#A.A.
3 A.

J.R. & M.G. GARVIN
#A.A.
689.04'

D. & L. CITIZO
#A.A.
5 A.

D.E. CHRISTEN
#PAT'S CO.
#G. & C. SHREVE
#A.A.

F.C. POGGEL
#A.A.
12 A.

J.B. & G. Roberts #2

CHARLES SEEMAN PL #1

E. & M. RANIER
#A.A.
RA.

J. & E. KASSO Plot #2
#A.A.
0.925 Ac.

Vol. 43 - Pg. 280
#A.A.
1.609 Ac.

30' LAVE
#A.A.
7.274 A.
682.0'

A. & V. TESCHER
#A.A.
PL. #1

Vol. 57
Pg. 659

G. Bokelmau Plat #1
Vol. 38 - Pg. 38

G. & L. Bokelmau
#A.A.
3 A.

D.L. & M. Vickers
#A.A.
JA.

#H.C. & H.E. MORRIS
#N.E. & H.E. MORRIS
#A.A.
W.F.S. BROADMALL
689.04'

ACT MYERS
#G. SWINNERS
#A.A.
3 A.

#E.D. & M.I. GRAPENTINE
#A.A.
1.0 A.

#A. NATHRICK
#A.A.
3 A.

J.R. & M.G. GARVIN
#A.A.
689.04'

D. & L. CITIZO
#A.A.
5 A.

D.E. CHRISTEN
#PAT'S CO.
#G. & C. SHREVE
#A.A.

F.C. POGGEL
#A.A.
12 A.

J. & E. KASSO Plot #2
#A.A.
0.925 Ac.

Vol. 43 - Pg. 280
#A.A.
1.609 Ac.

30' LAVE
#A.A.
7.274 A.
682.0'

A. & V. TESCHER
#A.A.
PL. #1

Vol. 57
Pg. 659

G. Bokelmau Plat #1
Vol. 38 - Pg. 38

G. & L. Bokelmau
#A.A.
3 A.

D.L. & M. Vickers
#A.A.
JA.

#H.C. & H.E. MORRIS
#N.E. & H.E. MORRIS
#A.A.
W.F.S. BROADMALL
689.04'

ACT MYERS
#G. SWINNERS
#A.A.
3 A.

#E.D. & M.I. GRAPENTINE
#A.A.
1.0 A.

#A. NATHRICK
#A.A.
3 A.

J.R. & M.G. GARVIN
#A.A.
689.04'

D. & L. CITIZO
#A.A.
5 A.

D.E. CHRISTEN
#PAT'S CO.
#G. & C. SHREVE
#A.A.

F.C. POGGEL
#A.A.
12 A.

J. & E. KASSO Plot #2
#A.A.
0.925 Ac.

Vol. 43 - Pg. 280
#A.A.
1.609 Ac.

30' LAVE
#A.A.
7.274 A.
682.0'

A. & V. TESCHER
#A.A.
PL. #1

Vol. 57
Pg. 659

G. Bokelmau Plat #1
Vol. 38 - Pg. 38

G. & L. Bokelmau
#A.A.
3 A.

D.L. & M. Vickers
#A.A.
JA.

#H.C. & H.E. MORRIS
#N.E. & H.E. MORRIS
#A.A.
W.F.S. BROADMALL
689.04'

ACT MYERS
#G. SWINNERS
#A.A.
3 A.

#E.D. & M.I. GRAPENTINE
#A.A.
1.0 A.

#A. NATHRICK
#A.A.
3 A.

J.R. & M.G. GARVIN
#A.A.
689.04'

D. & L. CITIZO
#A.A.
5 A.

D.E. CHRISTEN
#PAT'S CO.
#G. & C. SHREVE
#A.A.

F.C. POGGEL
#A.A.
12 A.

J. & E. KASSO Plot #2
#A.A.
0.925 Ac.

Vol. 43 - Pg. 280
#A.A.
1.609 Ac.

30' LAVE
#A.A.
7.274 A.
682.0'

A. & V. TESCHER
#A.A.
PL. #1

Vol. 57
Pg. 659

G. Bokelmau Plat #1
Vol. 38 - Pg. 38

G. & L. Bokelmau
#A.A.
3 A.

D.L. & M. Vickers
#A.A.
JA.

#H.C. & H.E. MORRIS
#N.E. & H.E. MORRIS
#A.A.
W.F.S. BROADMALL
689.04'

ACT MYERS
#G. SWINNERS
#A.A.
3 A.

#E.D. & M.I. GRAPENTINE
#A.A.
1.0 A.

#A. NATHRICK
#A.A.
3 A.

J.R. & M.G. GARVIN
#A.A.
689.04'

D. & L. CITIZO
#A.A.
5 A.

D.E. CHRISTEN
#PAT'S CO.
#G. & C. SHREVE
#A.A.

F.C. POGGEL
#A.A.
12 A.

J. & E. KASSO Plot #2
#A.A.
0.925 Ac.

Vol. 43 - Pg. 280
#A.A.
1.609 Ac.

30' LAVE
#A.A.
7.274 A.
682.0'

A. & V. TESCHER
#A.A.
PL. #1

Vol. 57
Pg. 659

G. Bokelmau Plat #1
Vol. 38 - Pg. 38

G. & L. Bokelmau
#A.A.
3 A.

D.L. & M. Vickers
#A.A.
JA.

#H.C. & H.E. MORRIS
#N.E. & H.E. MORRIS
#A.A.
W.F.S. BROADMALL
689.04'

ACT MYERS
#G. SWINNERS
#A.A.
3 A.

#E.D. & M.I. GRAPENTINE
#A.A.
1.0 A.

#A. NATHRICK
#A.A.
3 A.

J.R. & M.G. GARVIN
#A.A.
689.04'

D. & L. CITIZO
#A.A.
5 A.

D.E. CHRISTEN
#PAT'S CO.
#G. & C. SHREVE
#A.A.

F.C. POGGEL
#A.A.
12 A.

J. & E. KASSO Plot #2
#A.A.
0.925 Ac.

Vol. 43 - Pg. 280
#A.A.
1.609 Ac.

30' LAVE
#A.A.
7.274 A.
682.0'

A. & V. TESCHER
#A.A.
PL. #1

Vol. 57
Pg. 659

G. Bokelmau Plat #1
Vol. 38 - Pg. 38

G. & L. Bokelmau
#A.A.
3 A.

D.L. & M. Vickers
#A.A.
JA.

#H.C. & H.E. MORRIS
#N.E. & H.E. MORRIS
#A.A.
W.F.S. BROADMALL
689.04'

ACT MYERS
#G. SWINNERS
#A.A.
3 A.

#E.D. & M.I. GRAPENTINE
#A.A.
1.0 A.

#A. NATHRICK
#A.A.
3 A.

J.R. & M.G. GARVIN
#A.A.
689.04'

D. & L. CITIZO
#A.A.
5 A.

D.E. CHRISTEN
#PAT'S CO.
#G. & C. SHREVE
#A.A.

F.C. POGGEL
#A.A.
12 A.

J. & E. KASSO Plot #2
#A.A.
0.925 Ac.

Vol. 43 - Pg. 280
#A.A.
1.609 Ac.

30' LAVE
#A.A.
7.274 A.
682.0'

A. & V. TESCHER
#A.A.
PL. #1

Vol. 57
Pg. 659

G. Bokelmau Plat #1
Vol. 38 - Pg. 38

G. & L. Bokelmau
#A.A.
3 A.

D.L. & M. Vickers
#A.A.
JA.

#H.C. & H.E. MORRIS
#N.E. & H.E. MORRIS
#A.A.
W.F.S. BROADMALL
689.04'

ACT MYERS
#G. SWINNERS
#A.A.
3 A.

#E.D. & M.I. GRAPENTINE
#A.A.
1.0 A.

#A. NATHRICK
#A.A.
3 A.

J.R. & M.G. GARVIN
#A.A.
689.04'

D. & L. CITIZO
#A.A.
5 A.

D.E. CHRISTEN
#PAT'S CO.
#G. & C. SHREVE
#A.A.

F.C. POGGEL
#A.A.
12 A.

J. & E. KASSO Plot #2
#A.A.
0.925 Ac.

Vol. 43 - Pg. 280
#A.A.
1.609 Ac.

30' LAVE
#A.A.
7.274 A.
682.0'

A. & V. TESCHER
#A.A.
PL. #1

Vol. 57
Pg. 659

G. Bokelmau Plat #1
Vol. 38 - Pg. 38

G. & L. Bokelmau
#A.A.
3 A.

D.L. & M. Vickers
#A.A.
JA.

#H.C. & H.E. MORRIS
#N.E. & H.E. MORRIS
#A.A.
W.F.S. BROADMALL
689.04'

ACT MYERS
#G. SWINNERS
#A.A.
3 A.

#E.D. & M.I. GRAPENTINE
#A.A.
1.0 A.

#A. NATHRICK
#A.A.
3 A.