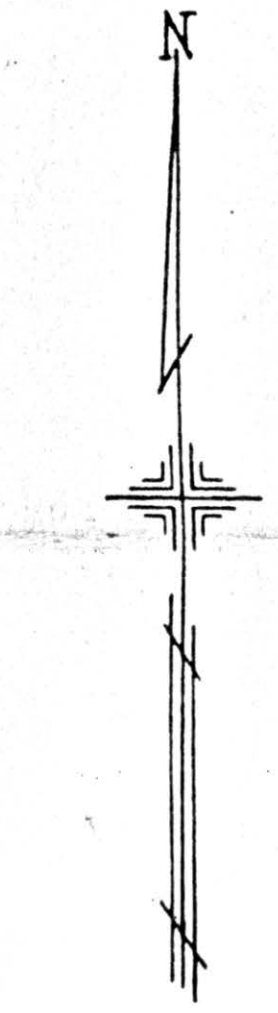


PLATE 63
SECTION No. 36

SMITH TWP.
OFFICE OF COUNTY ENGINEER
MAHONING COUNTY COURT HOUSE
YOUNGSTOWN, OHIO

GIS 7-12-06



SCALE
1" = 100'

64

LEGEND

- 44 PLATE NUMBER
- 4700 HOUSE NUMBERING GRID
- 4170 HOUSE NUMBER

62

See map #62

See map #62
G. RITCHIE
#H. & E. Cattell
#38.60 A. (Pt.)
36.8 A

C. J. & E. STANLEY
#I. M. Stanley
#39.0 A. (Pt.)
35.306 A. (Pt.)

D. & R. DENNY
#R. O. & D. M. Cameron
#H. F. & C. C. Cameron
#32.60 A. (Pt.)
#31.60 A. (Pt.)
#28.00 A.
#27.986 A. (Pt.)

D. C. & M. A. DENNY
#A. O. & L. Fryfogle
#34.08 A.
#33.33 A.
#33.22 A.
#27.530 Ac.
27.068 Ac.

CHARLES & VICTORIA LEAF
S. 0.49 Ac.

G. E. & G. C. SMITH
R.A.

J. J. S.R. SAMPEDO PLAT #2
#F. Robinson
#J. J. Sampedo
#J. J. Sampedo

Ralph Cameron
#5
#4
#3
#2

58

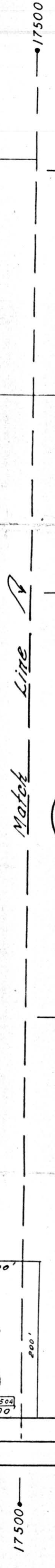
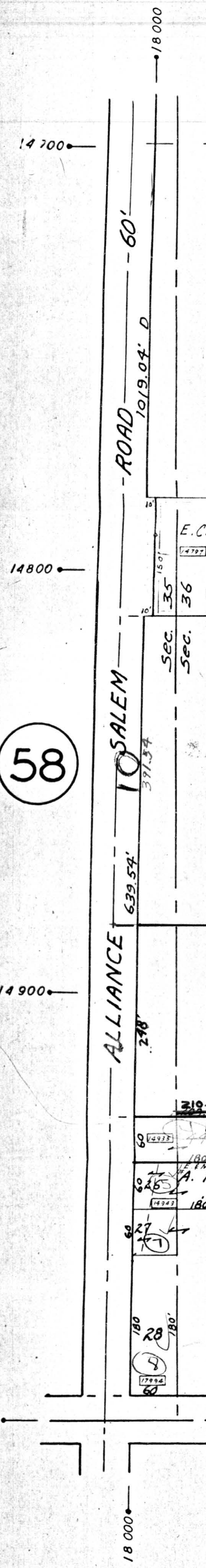
ROAD 1019.04' D

SALEM 639.54'

ALLIANCE 328'

HARRISBURG WESTVILLE ROAD 642.18'

MAHONING Co. Columbiana Co.



Match

Line

Match

Line

1401.18' D 2044.02'

351.12 1291.62 D

2.42A

351.12' 291.72'

E. C. CATTELL EST. PL. #1
Vol. 49 - Pg 164

RE PLAT 44
Vol. 68

V. E. & M. M. Galbreath
196A

264

#W. H. Ingold
#J. S. & L. M. BRAND
#W. H. Ingold

#Wayne Huberty
#W. J. & E. B. Johnson
#A. P. Boehm

Vol. 76

PG. 28

1002.54'