

625  
7-19-06

OFFICE OF COUNTY ENGINEER  
MAHONING COUNTY COURT HOUSE  
YOUNGSTOWN, OHIO



SCALE  
1" = 100'  
REVISED - FEB. 1951

LEGEND

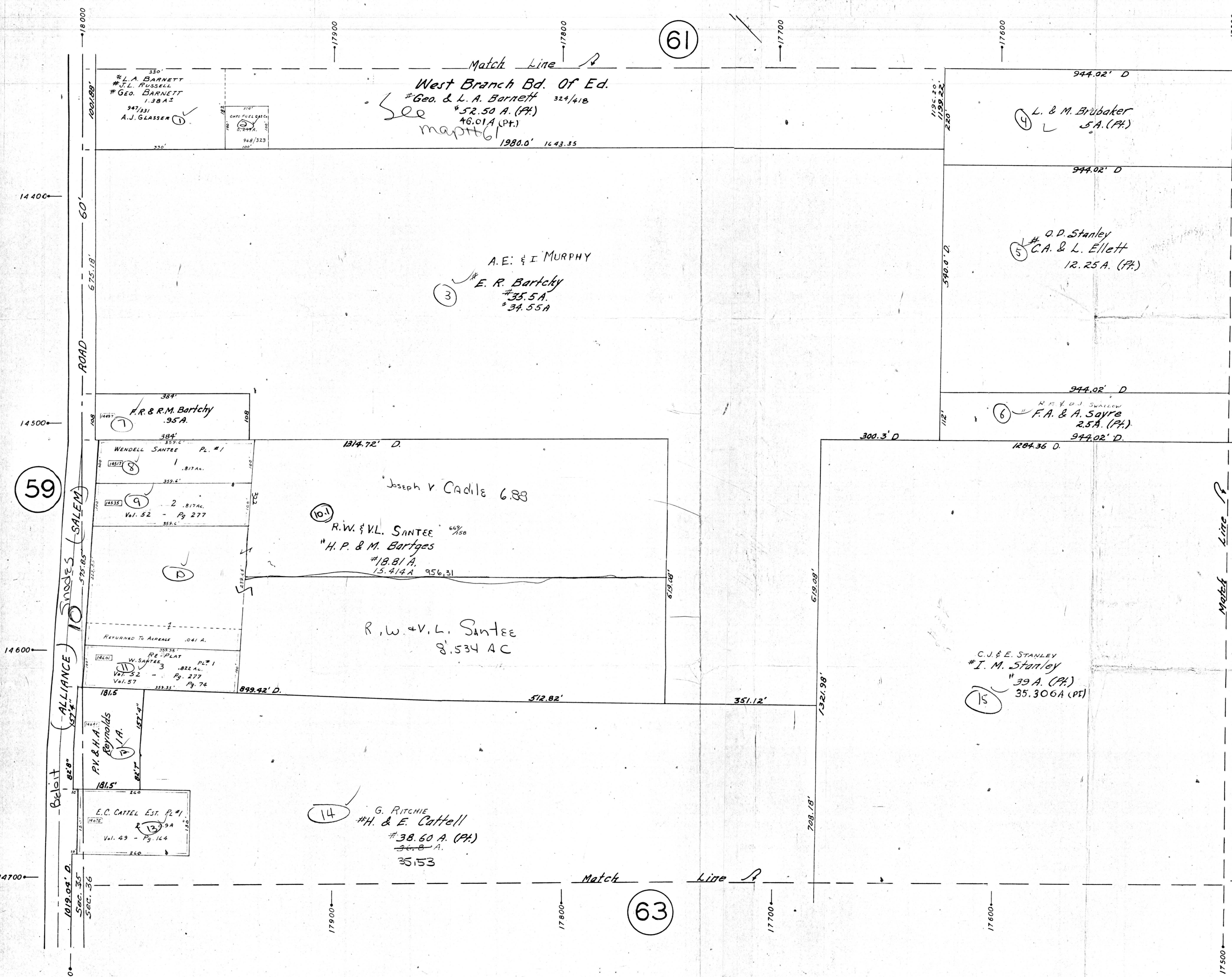
- (21) PLATE NUMBER
- 4700 HOUSE NUMBERING GRID
- 4170 HOUSE NUMBER

(61)

(63)

(65)

(59)



Match Line  
 West Branch Bd. Of Ed.  
 Geo. & L. A. Barnett 324/418  
 #52.50 A. (PH.)  
 #46.01 A. (PT.)  
 map 61  
 1980.0' 1443.35

A.E. & I. MURPHY  
 E. R. Bartchy  
 #35.5 A.  
 #34.55 A.

Joseph V. Cadile 6.88  
 R.W. & V.L. SANTEE 69%  
 #H. P. & M. Bartges  
 #18.81 A.  
 15.414 A 956.31

R. W. & V. L. Santee  
 8.534 AC

G. RITCHIE  
 #H. & E. Cattell  
 #38.60 A. (PH.)  
 36.8 A.  
 35.153

L. & M. Brubaker  
 5 A. (PH.)

O. D. Stanley  
 C.A. & L. Ellett  
 12.25 A. (PH.)

F.A. & A. Sayre  
 2.5 A. (PH.)  
 944.02' D.

C. J. & E. STANLEY  
 #I. M. Stanley  
 39 A. (PH.)  
 35.306 A. (PT.)

#L.A. BARNETT  
 #J.L. RUSSELL  
 #Geo. BARNETT  
 1.38 A.  
 947/331  
 A.J. GLASSER

F.R. & R.M. Bartchy  
 9.5 A.

WENDELL SANTEE Pl. #1  
 1 .817 AC.

2 .817 AC.  
 Vol. 52 - Pg. 277

RE-PLAT  
 W. SANTEE  
 Vol. 52 - Pg. 277  
 Vol. 57 - Pg. 74

REYNOLDS  
 R.V. & H.A.

E.C. CATTELL EST. PL. #1  
 Vol. 49 - Pg. 144

ALLIANCE 10 SPODES (SALEM)

Beloit

1819.04' D.  
 Sec. 35  
 Sec. 36