

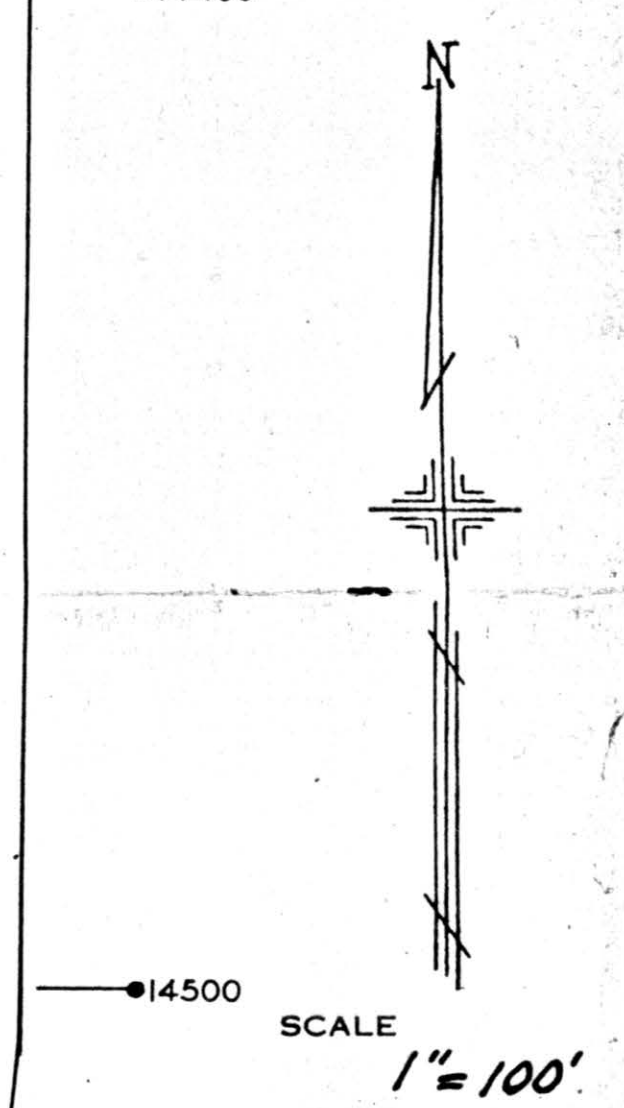
PLATE 59

SECTION No. 35

GIS
7-12-06

SMITH TWP.

OFFICE OF COUNTY ENGINEER
MAHONING COUNTY COURT HOUSE
YOUNGSTOWN, OHIO



62

LEGEND

21

PLATE NUMBER

4700

HOUSE NUMBERING GRID

4170

HOUSE NUMBER

60

56

58

Handwritten: See map #55

Handwritten: See map #58

Match Line A

Match Line A

ROAD

SALEM

10 ALLIANCE

Sec. 35
Sec. 36

TRI-CITY AIRPORT INC.
2 Ac

D.H. CATTELL
#R. A. Cattell
#100 A. (Pt.)
98 Ac.

TRI-CITY AIRPORT, INC.
#T. R. ISRAEL
#36.58 A. (Pt.)
#24.04 A.
21.32 A.

TRI-CITY AIRPORT, INC.
#RUSSELL MILLER
40 Ac.

G.P.E. J. GLASSER
#ALFRED A. MURPHY
#ELIZ. C. MURPHY
#D. M. Wood
4.17 A.

D.J.E. Mc Daniels
Peter Calabria
#V.Y. Helsel
1A.
201.96'

#D. M. Wood
#49A.
173.5'

R.G. & M.L. SMITH
#I. T. Cobbs
3.16 A.

R.W. & D.G. BROWN
#W. R. Richardson
#29.88A.
(31A. Deed)
#28.22A.
23.209

W.R. RICHARDSON PLAT
NO. 1
LOT #1
VOL. 48 - PG. 6

18500
18400
18300
18200
18100
18000

18000
14700
14800
14500
14400

629.62'
662.32'
1970.10'

486.6'

12.54 A.

18500

150'

2649.21'

18400

1491.6'

2649.21'

18300

855'

1570.8'

18200

2643.96'

524.04'

18100

560.34'

541.2'

18000

357.72'

444.603'

17900

223.06'

170'

17800

203.94'

170'

17700

203.94'

170'

17600

203.94'

170'

17500

203.94'

170'

17400

203.94'

170'

17300

203.94'

170'

17200

203.94'

170'

17100

203.94'

170'

17000

203.94'

170'

16900

203.94'

170'

16800

203.94'

170'

16700

203.94'

170'

16600

203.94'

170'

16500

203.94'

170'

16400

203.94'

170'

16300

203.94'

170'

16200

203.94'

170'

16100

203.94'

170'

16000

203.94'

170'

15900

203.94'

170'

15800

203.94'

170'

15700

203.94'

170'

15600

203.94'

170'

15500

203.94'

170'

15400

203.94'

170'

15300

203.94'

170'

15200

203.94'

170'

15100

203.94'

170'

15000

203.94'

170'

14900

203.94'

170'

14800

203.94'

170'

14700

203.94'

170'

14600

203.94'

170'

14500

203.94'

170'

14400

203.94'

170'

14300

203.94'

170'

14200

203.94'

170'

14100

203.94'

170'

14000

203.94'

170'

13900

203.94'

170'

13800

203.94'

170'

13700

203.94'

170'

13600

203.94'

170'

13500

203.94'

170'

13400

203.94'

170'

13300

203.94'

170'

13200

203.94'

170'

13100

203.94'

170'

13000

203.94'

170'

12900

203.94'

170'

12800

203.94'

170'

12700

203.94'

170'

12600

203.94'

170'

12500

203.94'

170'

12400

203.94'

170'

12300

203.94'

170'

12200

203.94'

170'

12100

203.94'

170'

12000