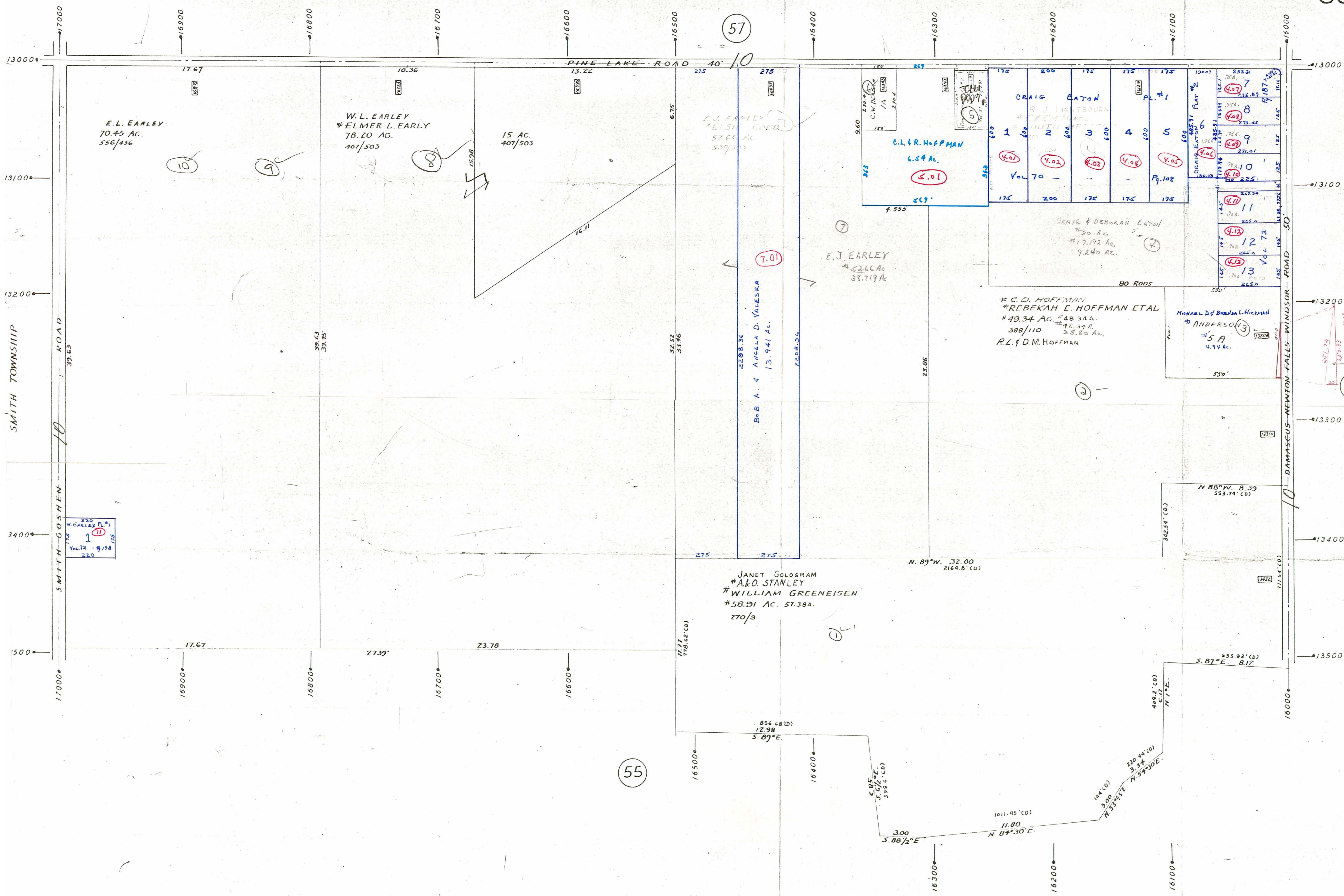


GIS
6-21-06



SCALE 1" = 200'

STATE OF OHIO
PERPET. EASEMENT-1977
PARC. #2
CASE NO. 77 CV-1170
.06 AC.
3.01

LEGEND

- 44 PLATE NUMBER
- 4300 HOUSE NUMBERING GRID
- 4202 HOUSE NUMBER

SMITH TOWNSHIP

SMITH-GOSHEN ROAD

PINE LAKE ROAD

DAMASCUS-NEWTON FALLS WINDSOR ROAD

57

55

