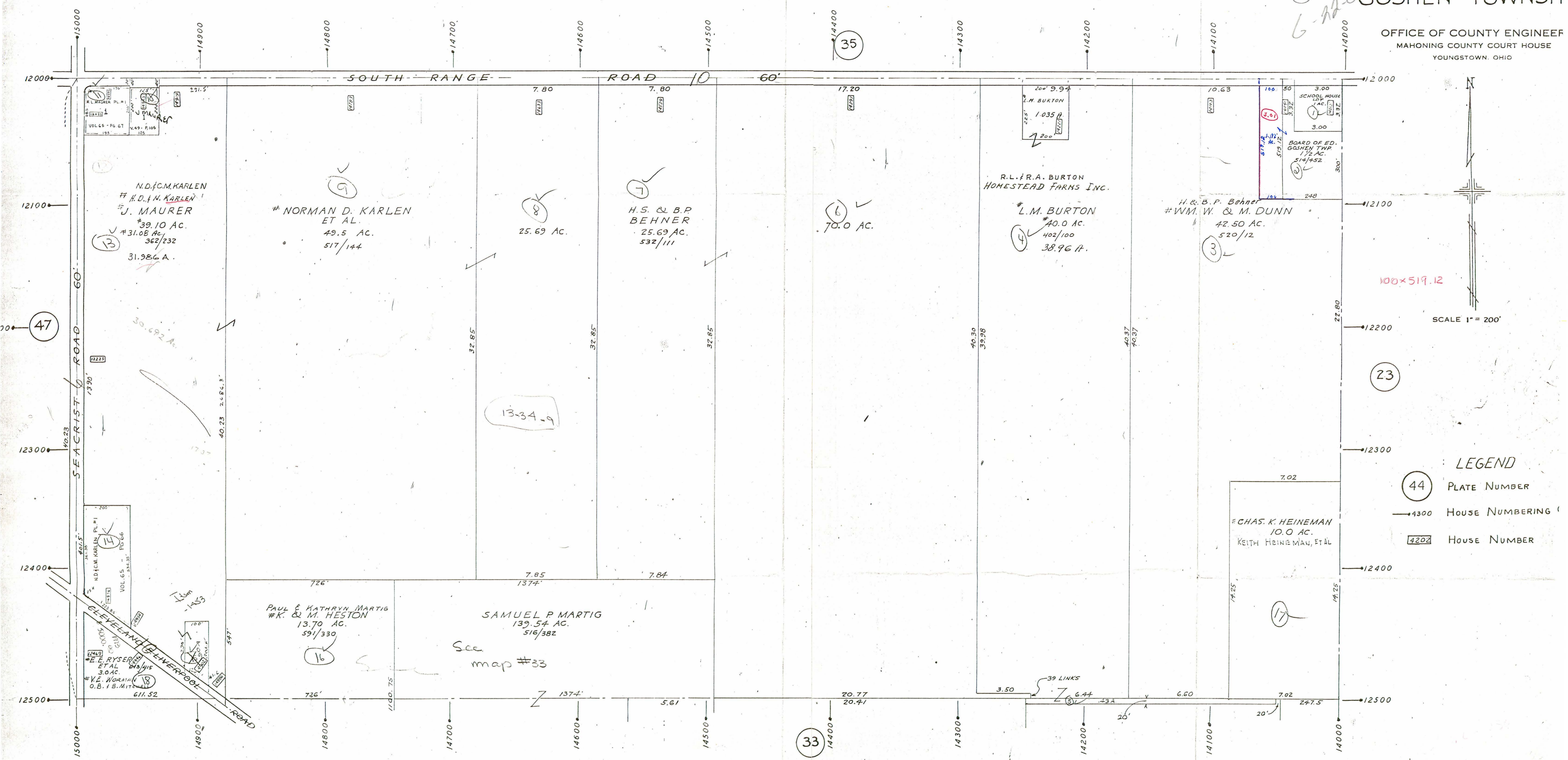


Handwritten notes: "G.D.", "6-11-06"



100x519.12

SCALE 1" = 200'

LEGEND

- (44) PLATE NUMBER
- 4300 HOUSE NUMBERING
- 4202 HOUSE NUMBER

33

47

23

44

17

13-34-9

16

See map #33

20° 9.9'  
1.035 A

3.00  
SCHOOL HOUSE  
1/2 AC.  
3.00  
BOARD OF ED.  
GOSHEN TWP.  
1/2 AC.  
5/14/52

R.L.F.R.A. BURTON  
HOMESTEAD FARMS INC.

L.M. BURTON  
40.0 AC.  
402/100  
38.96 A.

H.B.P. Behner  
W.M. W. & M. DUNN  
42.50 AC.  
520/12

NORMAN D. KARLEN  
ET AL.  
49.5 AC.  
517/144

H.S. & B.P.  
BEHNER  
25.69 AC.  
532/111

N.D. & C.M. KARLEN  
H.D. & N. KARLEN  
J. MAURER  
39.10 AC.  
31.08 AC.  
362/232  
31.986 A.

PAUL & KATHRYN MARTIG  
& M. HESTON  
13.70 AC.  
591/330

SAMUEL P. MARTIG  
139.54 AC.  
516/382

CHAS. K. HEINEMAN  
10.0 AC.  
KEITH HEINEMAN, ET AL.