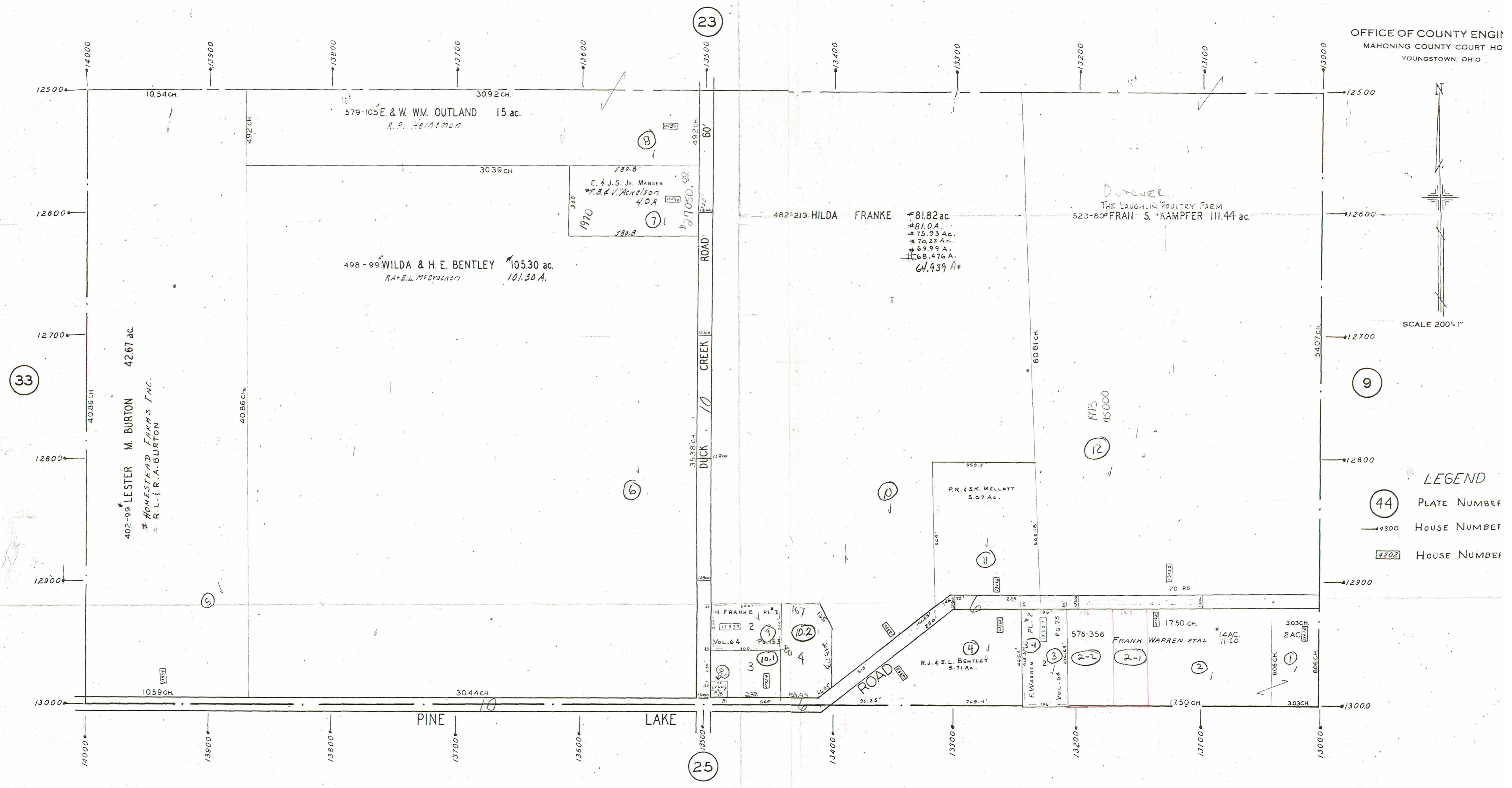


#2 #3 #10

PLATE 24

SECTION No. 24
SOUTH HALF
GOSHEN TOWN

OFFICE OF COUNTY ENGINEER
MAHONING COUNTY COURT HOUSE
YOUNGSTOWN, OHIO



SCALE 200' = 1"

LEGEND

- (44) PLATE NUMBER
- 4300 HOUSE NUMBER
- 4202 HOUSE NUMBER