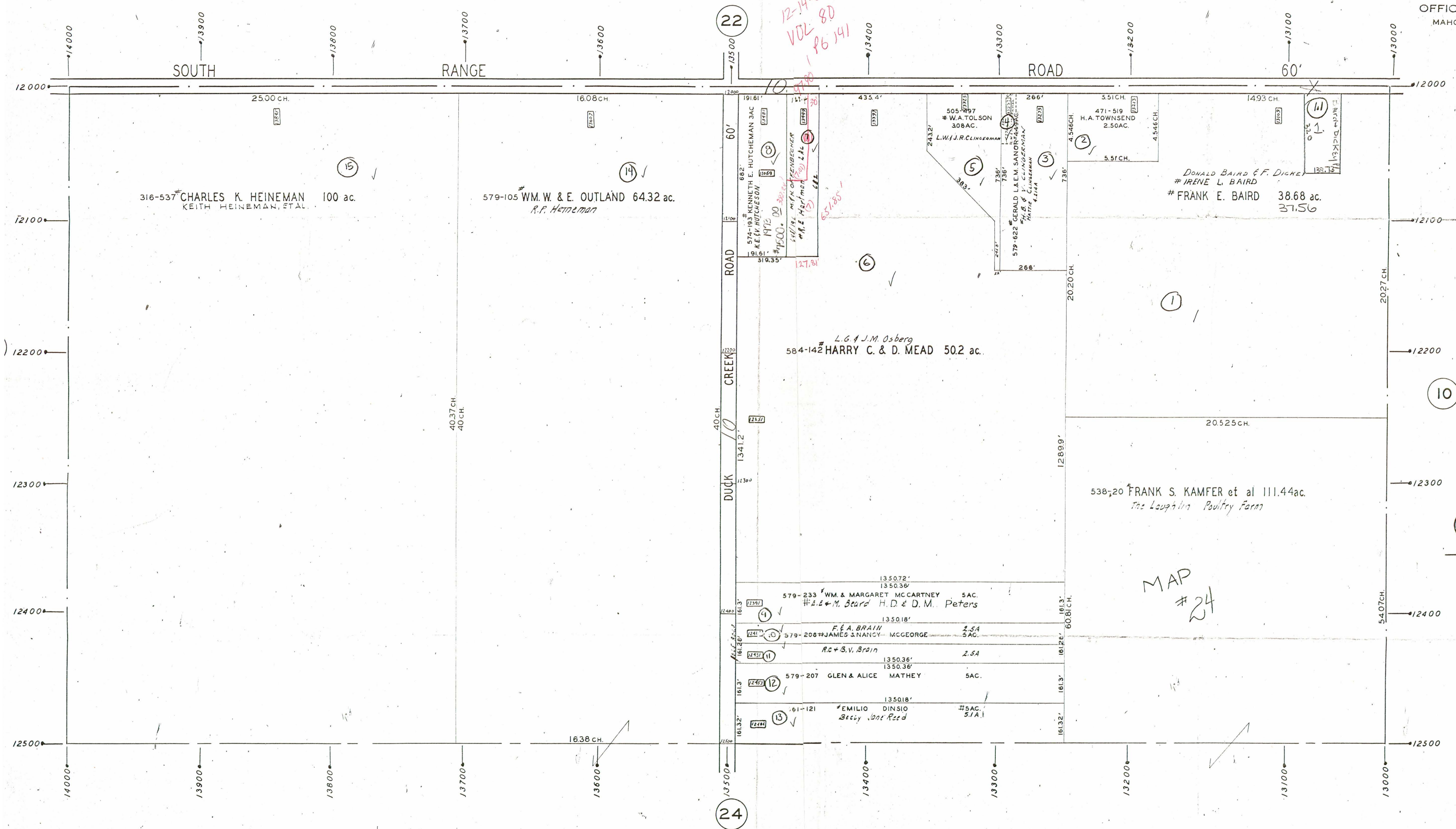


GIS  
6-22-06

SECTION No. 22  
NORTH HALF

GOSHEN TOWNSHIP

OFFICE OF COUNTY ENGINEER  
MAHONING COUNTY COURT HOUSE  
YOUNGSTOWN, OHIO  
JUNE 1946



SCALE 200' = 1"  
6-5-56  
4/66

10

LEGEND

- 44 PLATE NUMBER
- 1300 HOUSE NUMBERING GRID
- 9202 HOUSE NUMBER

22

24

12-14-88  
VOL. 80  
P. 6141

MAP #24