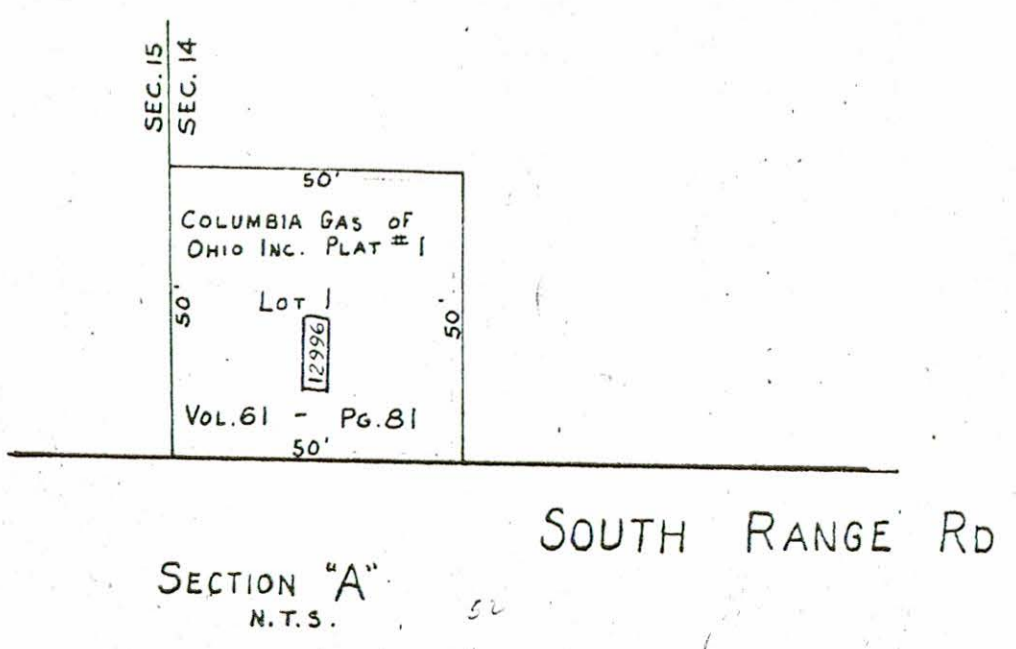


- LEGEND
- ④④ PLATE NUMB
 - 4300 HOUSE NUM
 - ④④④ HOUSE NUM



22

12

6

44

10

SOUTH RANGE ROAD

ROAD

60'

KC + RW BLASIMAN

W. E. & D. J. BLASIMAN
R. & D. CITINO
569-200 # HARLOW & F. VANCE 56.88 ac

20.38 ac

507-93 LAURA WOLFORD 20 ac

EA WEINGART
517-208 # SAMUEL M. & E. A. WEINGART 43 ac

21.13 ac

ANDERSON
WEBBER
6.747 ac
7.26 ac
7.75 ac

MURPHY
WE, WEBBER
452-359 # MARY WEBBER # 23.26 ac
15.02
15.31

I. H. B. WAGNER
E. & A. GREGG
24.61 ac.
18.49 ac.
12.81 ac. 636/79

J. J. BOGAR # 22.10 ac

566-503 JOHN M. & M. L. BUEHLER # 83.47 ac
80.095 ac.
78.265 ac

R. W. & K. C. BLASIMAN
BESSIE M. LOTT # 11.19 ac
10.01 ac.
2.74 ac
RALPH & E. M. MOORE

E. & A. GREGG PLAT NO 1
VOL 35 PG 268

J. J. BOGAR PLAT # 1
RE - 2 PLAT # 1
VOL 67 PG 281

JOHN M. BUEHLER PLAT # 1
VOL 43 PG 99

J. M. BUEHLER PLAT # 2
VOL 43 PG 99