

PLATE 5

*625  
6-22-06*

SECTION No. **13**  
NORTH HALF

GOSHEN TOWNSHIP

OFFICE OF COUNTY ENGINEER  
MAHONING COUNTY COURT HOUSE  
YOUNGSTOWN, OHIO  
MAY, 1947

4

MIDDLETOWN ROAD

ROAD

60'

10900

11100

60'

ROAD

11200

11300

ROAD

60'

11300

WARREN TWP.

4

ROAD

11400

GREEN

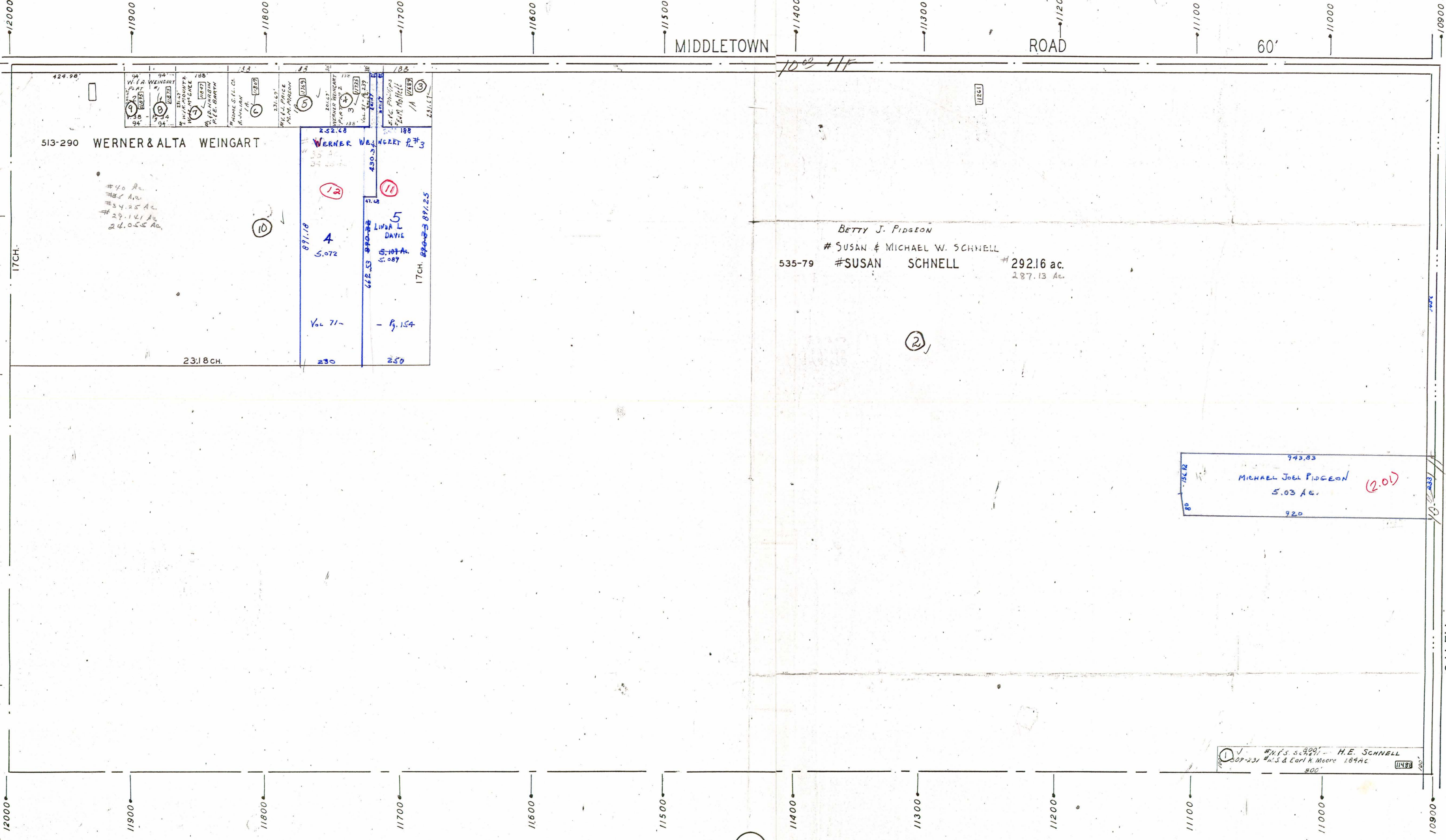
11500

SALEM

11500

11600

6



SCALE 200'="1"  
NOV. 1957  
5-25-56

- LEGEND
- (44) PLATE NUMBER
  - 4300 HOUSE NUMBERING
  - 4202 HOUSE NUMBER

H. E. SCHNELL  
NOV 1 1957  
PLAT 13