

OFFICE OF COUNTY ENGINEER
MAHONING COUNTY COURT HOUSE
YOUNGSTOWN, OHIO

GIS Department
Scanned: 3-7-01

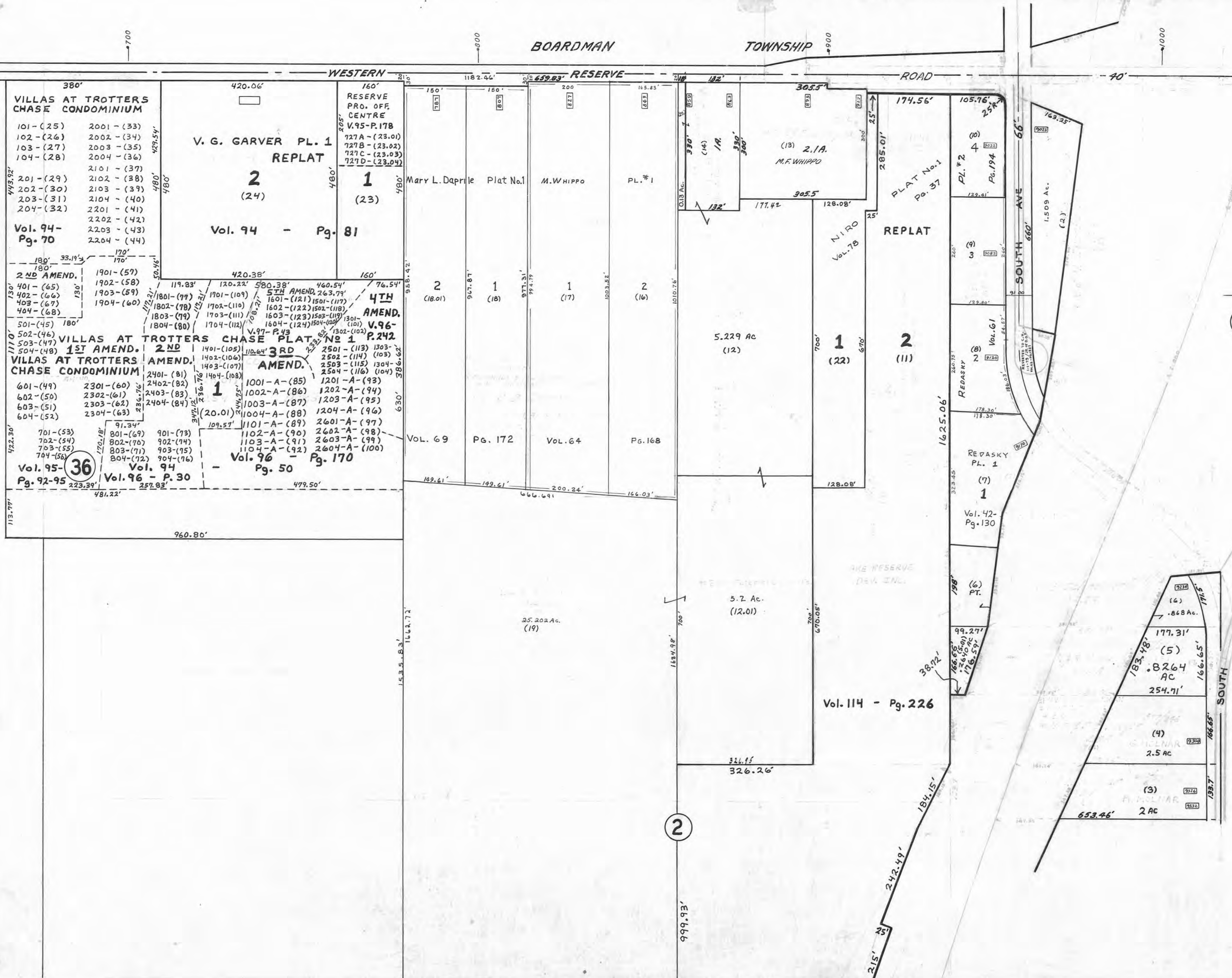


TOWNSHIP 216

SPRINGFIELD AVE.

SOUTH

- LEGEND**
- 44 PLATE NUMBER
 - 4300 HOUSE NUMBERING GRID
 - 4202 HOUSE NUMBER
 - (1.) PERMANENT PARCEL NUMBER



- VILLAS AT TROTTERS CHASE CONDOMINIUM**
- | | |
|----------|-----------|
| 101-(25) | 2001-(33) |
| 102-(26) | 2002-(34) |
| 103-(27) | 2003-(35) |
| 104-(28) | 2004-(36) |
| 201-(29) | 2101-(37) |
| 202-(30) | 2102-(38) |
| 203-(31) | 2103-(39) |
| 204-(32) | 2104-(40) |
| | 2201-(41) |
| | 2202-(42) |
| | 2203-(43) |
| | 2204-(44) |
- Vol. 94 - Pg. 70

V. G. GARVER PL. 1
REPLAT
2
(24)
Vol. 94 - Pg. 81

RESERVE PRO. OFF. CENTRE
V.95-P.178
727A-(23.01)
727B-(23.02)
727C-(23.03)
727D-(23.04)

- 2ND AMEND.**
- | | |
|----------|-----------|
| 401-(65) | 1901-(57) |
| 402-(66) | 1902-(58) |
| 403-(67) | 1903-(59) |
| 404-(68) | 1904-(60) |
- VILLAS AT TROTTERS CHASE PLAT No. 1 P.242**
- 1ST AMEND. 2ND**
- VILLAS AT TROTTERS AMEND. CHASE CONDOMINIUM**
- | | | |
|----------|-----------|-----------|
| 601-(49) | 2301-(60) | 2401-(81) |
| 602-(50) | 2302-(61) | 2402-(82) |
| 603-(51) | 2303-(62) | 2403-(83) |
| 604-(52) | 2304-(63) | 2404-(84) |

5TH AMEND. 4TH AMEND. V.96-P.242

| | |
|-------------|--------------|
| 1001-A-(85) | 1201-A-(93) |
| 1002-A-(86) | 1202-A-(94) |
| 1003-A-(87) | 1203-A-(95) |
| 1004-A-(88) | 1204-A-(96) |
| 1101-A-(89) | 2601-A-(97) |
| 1102-A-(90) | 2602-A-(98) |
| 1103-A-(91) | 2603-A-(99) |
| 1104-A-(92) | 2604-A-(100) |

Vol. 96 - Pg. 170

- 701-(53) 801-(69) 901-(73)
- 702-(54) 802-(70) 902-(74)
- 703-(55) 803-(71) 903-(75)
- 704-(56) 804-(72) 904-(76)
- Vol. 95 - Pg. 92-95 **36**
- Vol. 94 - Pg. 170
- Vol. 96 - P. 30

Mary L. Daprie Plat No. 1

M.WHIPPO PL. #1

5.229 AC (12)

5.2 AC (12.01)

25.202 AC (19)

Vol. 69 Pg. 172

Vol. 64 Pg. 168

N.I.R.O. REPLAT

PLAT No. 1 Pg. 37

PL. #2 Pg. 194

REDASKY PL. 1 (7) Vol. 42-Pg. 130

REDASKY PL. 1 (6) PT.

Vol. 114 - Pg. 226

163.25'

1509 AC (2)

1625.06'

177.31'

171.5'

166.65'

166.65'

133.7'

653.46'

2 AC (3)

2.5 AC (4)

8264 AC (5)

8264 AC (6)

2

9300

9200

9100

1000

900

800

700