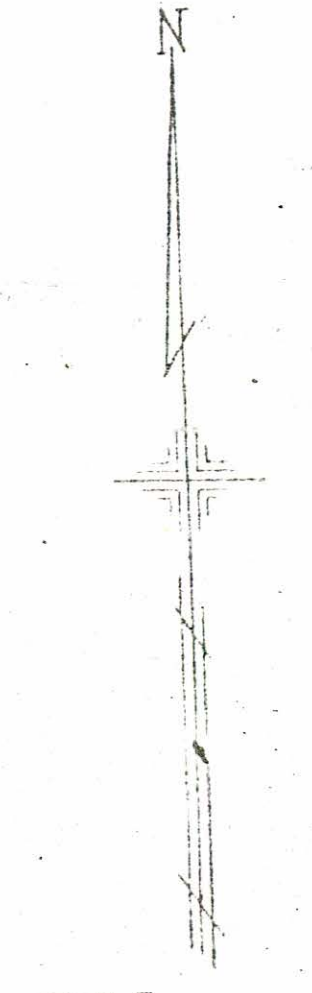
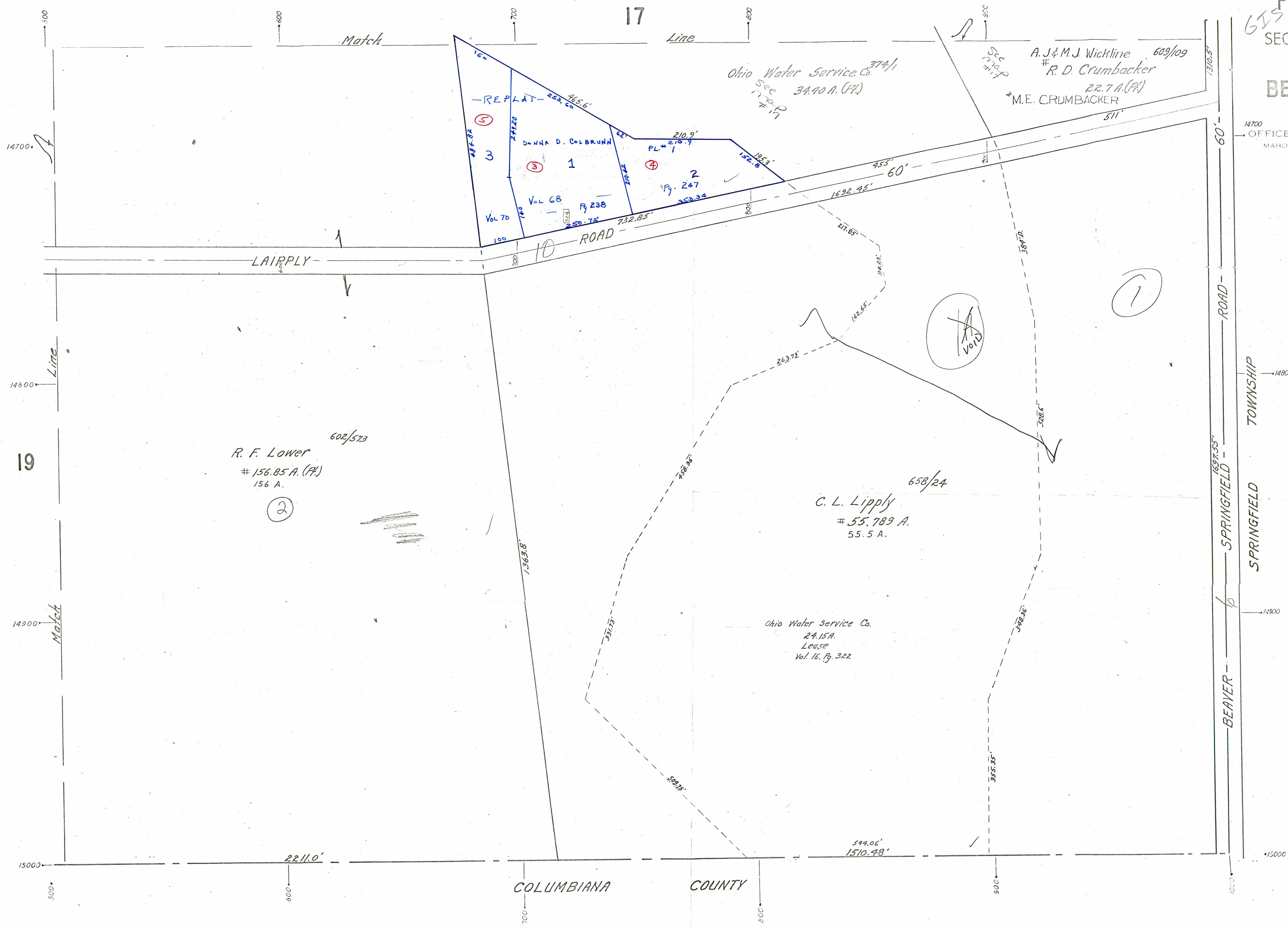


14700
OFFICE OF COUNTY ENGINEER
MAHONING COUNTY COURT HOUSE
LUNG TOWN, OHIO



SCALE
1" = 100'
Sept. 1952

LEGEND
(44) PLATE NUMBER
→ 4300 HOUSE NUMBERING GR
[4202] HOUSE NUMBER



500
14700
14800
14900
15000

Match Line

17

10 ROAD

LAIRPLY ROAD

1310.5' 60' 14800 14900 15000
697.35' BEAVER ROAD
1637.35' SPRINGFIELD ROAD

700 800 900
COLUMBIANA COUNTY

602/573
R. F. Lower
156.85 A. (PA)
156 A.
(2)

658/24
C. L. Lippy
55,789 A.
55.5 A.

Ohio Water Service Co. 374/1
See 34.40 A. (PA)
17-24-P
17

Sec #17
A. J. & M. J. Wickline 609/109
R. D. Crumbacker
22.7 A. (PA)
M. E. CRUMBACKER

Ohio Water Service Co.
24.15 A.
Lease
Vol. 16, Pg. 322

RE PLAT
D. W. N. A. D. COLBRUNN
PL. # 1
Pg. 247
Vol. 68 Pg. 238
Vol. 70 Pg. 250, 75
415.56'
453.40'
487.92'
277.20'
210.9'
216.7'
152.5'
125.2'
152.5'
732.85'
732.85'

VOID

594.06'
1510.48'

(1)

2211.0'