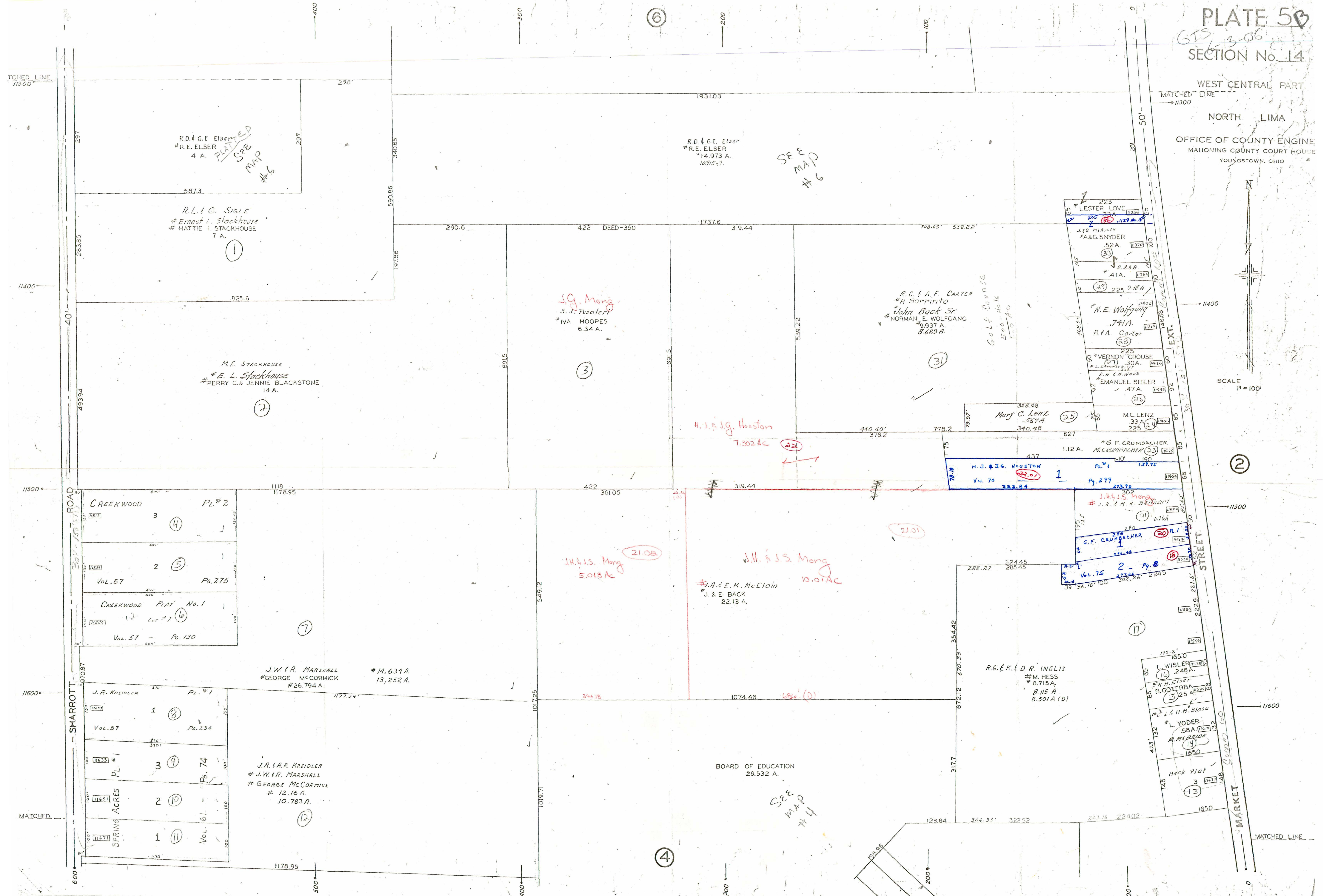


PLATE 50  
SECTION No. 14

WEST CENTRAL PART  
NORTH LIMA  
OFFICE OF COUNTY ENGINE  
MAHONING COUNTY COURT HOUSE  
YOUNGSTOWN, OHIO



SCALE 1" = 100'



R.D. & G.E. Elser  
# R.E. ELSEY  
4 A.  
SEE MAP #6

R.D. & G.E. Elser  
# R.E. ELSEY  
14.973 A.  
1895?

SEE MAP #6

R.L. & G. SIGLE  
# Ernest L. Stackhouse  
# HATTIE I. STACKHOUSE  
7 A.

J.G. Mong  
S. J. Pusateri  
# IVA HOOPES  
6.34 A.

R.C. & A.F. CARTER  
# A. SORRINTO  
# John Back Sr.  
# NORMAN E. WOLFGANG  
# 9.937 A.  
# 8.623 A.

M.E. STACKHOUSE  
# E. L. Stackhouse  
# PERRY C. & JENNIE BLACKSTONE  
14 A.

H. J. & J. G. Houston  
7.302 Ac

Mary C. LENZ  
# 33A .567 A.  
# 340.48

G.F. CRUMBACHER  
# M. CRUMBACHER (23)  
1.12 A.

H. J. & J. G. HOUSTON  
Vol. 70 # 322.84

J.H. & J.S. Mong  
5.018 Ac

J.H. & J.S. Mong  
10.01 Ac

J.A. & E.M. McClain  
# J. & E. BACK  
22.12 A.

J.W. & R. MARSHALL  
# GEORGE MCCORMICK  
# 26.794 A.

J.R. & A.R. KREIDLER  
# J.W. & R. MARSHALL  
# GEORGE MCCORMICK  
# 12.16 A.  
# 10.783 A.

R.G. & K. & D.R. INGLIS  
# M. HESS  
# 8.715 A.  
# 8.115 A.  
# 8.501 A. (D)

BOARD OF EDUCATION  
26.532 A.

SEE MAP #4