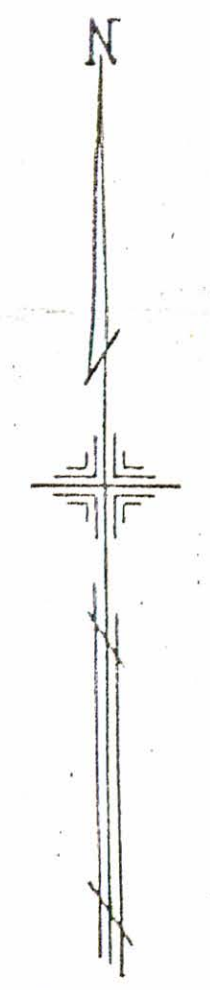


675 6-16-06

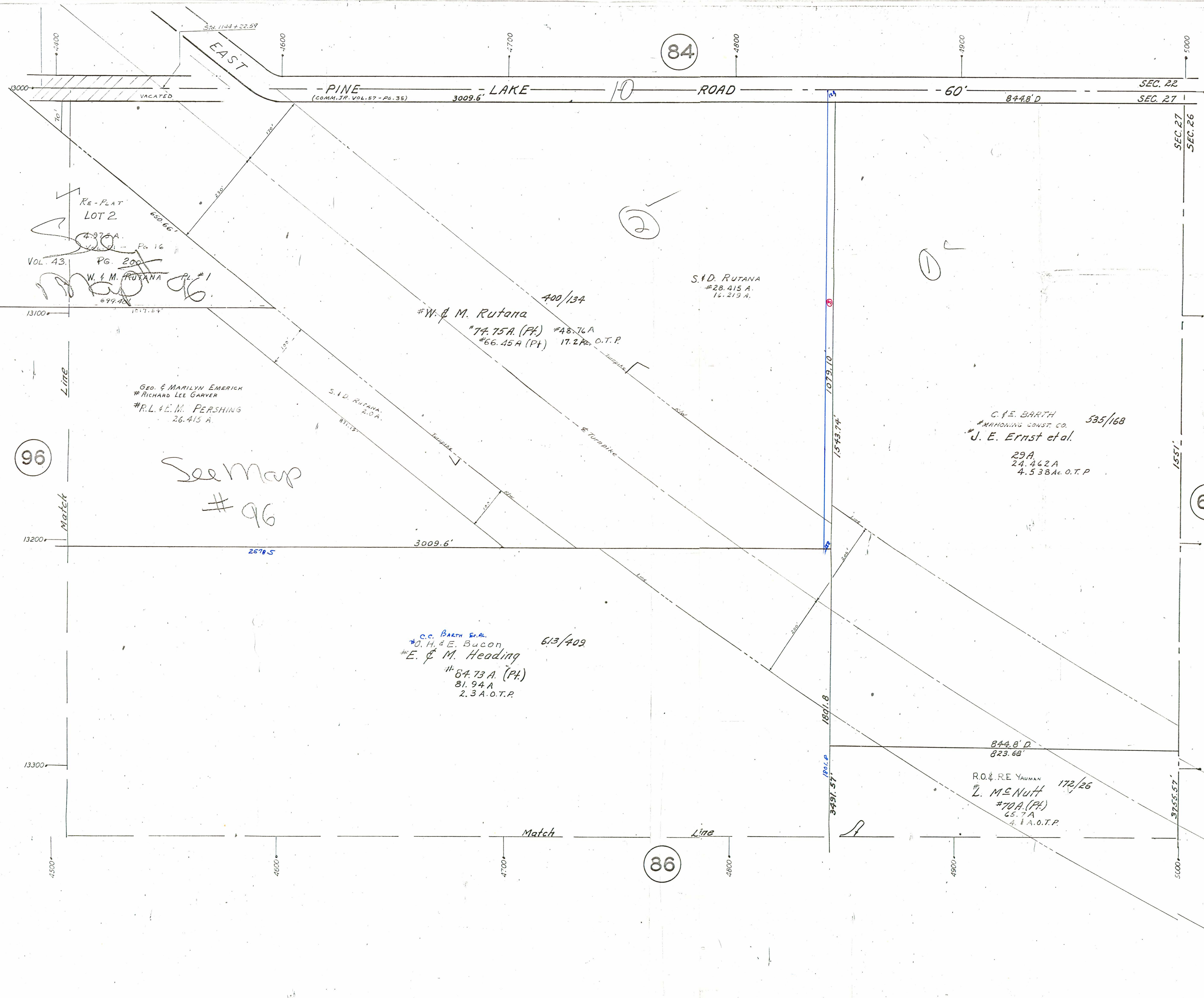
OFFICE OF COUNTY ENGINEER
MAHONING COUNTY COURT HOUSE
YOUNGSTOWN OHIO



SCALE
1" = 100'
DEC. 1951

LEGEND

- (44) PLATE NUMBER
- 4700 HOUSE NUMBERING GRID
- [4170] HOUSE NUMBER



84

86

60

96

See Map #96

W. & M. Rutana
74.75 A. (Pt.) # 48.76 A.
66.45 A. (Pt.) 17.2 A. O.T.P.

S. & D. RUTANA
28.415 A.
12.219 A.

C. & E. BARTH 535/168
MAHONING CONST. CO.
J. E. Ernst et al.

29A
24.462A
4.538Ac. O.T.P.

C.C. BARTH ET AL. 613/409
O. H. & E. BUON
E. & M. Heading
64.73 A. (Pt.)
81.94 A.
2.3 A. O.T.P.

844.8' D.
823.68'
RO. & RE YAUMAN 172/26
L. MENUTT
70A. (Pt.)
65.7 A.
4.1 A. O.T.P.

EAST

PINE LAKE ROAD

Match

Line

SEC. 27
SEC. 26

1557'

3725.57'

1079.10'

1891.8'

3491.57'

Lite

Match

Match

13000

13100

13200

13300

4500

4600

4700

4800

4900

5000

Sta. 1141+22.59

1600

4700

4800

4900

5000

3009.6'

844.8' D.

SEC. 22
SEC. 27

13000

SEC. 27
SEC. 26

13100

13200

13300

5000

RE-PLAT
LOT 2

4975A

Vol. 43. Pg. 200

W. & M. RUTANA PL #1

699.40'

1017.54'

GEO. & MARILYN EMERICK
RICHARD LEE GARYER
R.L. & E.M. PERSHING
26.415 A.

S. & D. RUTANA
2.0 A.

400/134

74.75 A. (Pt.) # 48.76 A.
66.45 A. (Pt.) 17.2 A. O.T.P.

535/168

613/409

172/26

VACATED

70'

630.66'

230'

120'

150'

871.12'

1017.54'

1017.54'

1017.54'

1017.54'

1017.54'

1017.54'

1017.54'

1017.54'

1017.54'

1017.54'

1017.54'

1017.54'

1017.54'

1017.54'

1017.54'

1017.54'

1017.54'

1017.54'

1017.54'

1017.54'

1017.54'

1017.54'

1017.54'

1017.54'

1017.54'

1017.54'

1017.54'

1017.54'

1017.54'

1017.54'

1017.54'

1017.54'

1017.54'

1017.54'

1017.54'

1017.54'

1017.54'

1017.54'

1017.54'

1017.54'

1017.54'

1017.54'

1017.54'

1017.54'

1017.54'

1017.54'

1017.54'

1017.54'

1017.54'

1017.54'

1017.54'

1017.54'

1017.54'

1017.54'

1017.54'

1017.54'

1017.54'

1017.54'

1017.54'

1017.54'

1017.54'

1017.54'

1017.54'

1017.54'

1017.54'

1017.54'

1017.54'

1017.54'

1017.54'

1017.54'

1017.54'

1017.54'

1017.54'

1017.54'

1017.54'

1017.54'

1017.54'

1017.54'

1017.54'

1017.54'

1017.54'