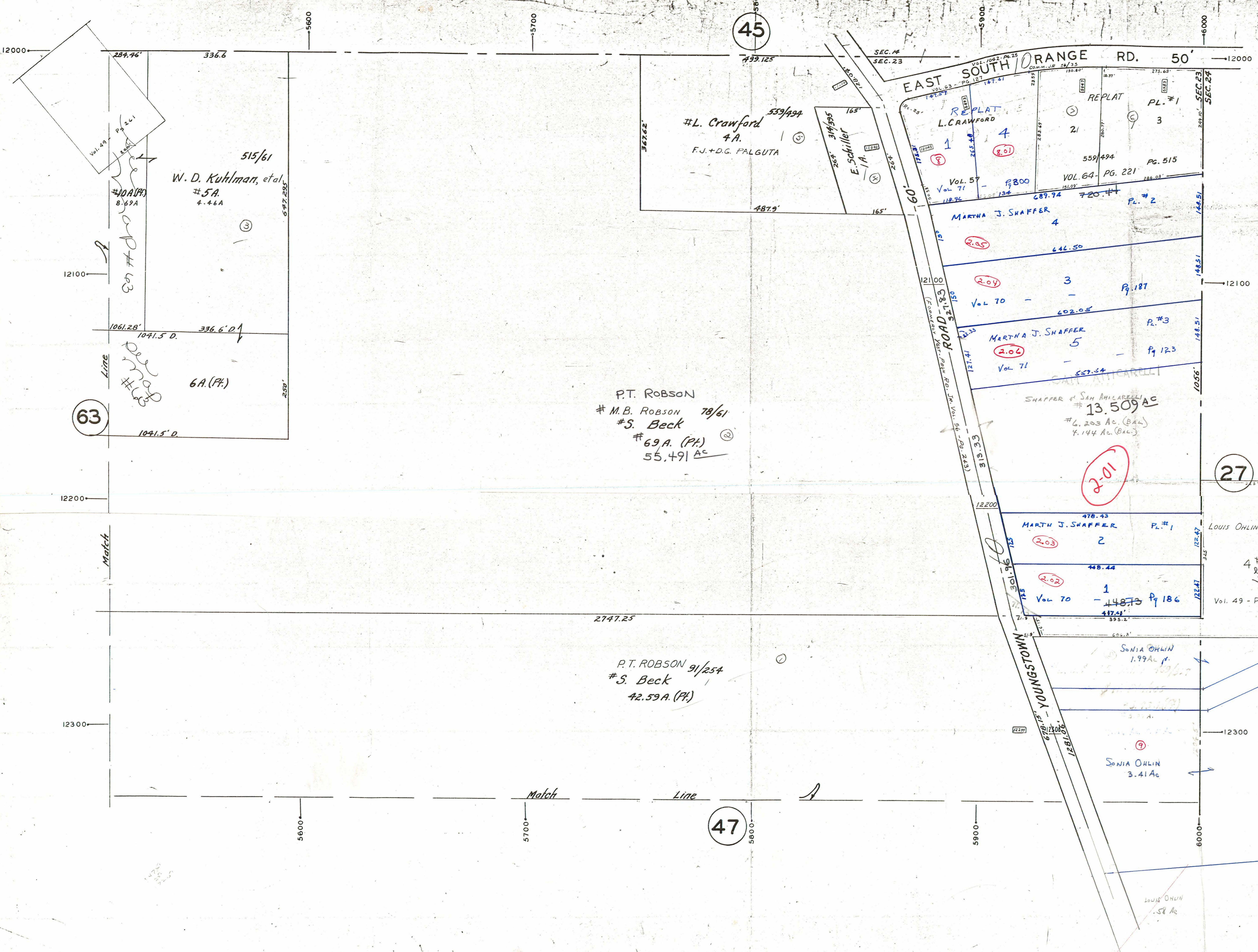




SCALE  
1" = 100'  
DEC. 1951

LEGEND

- (44) PLATE NUMBER
- 4700 HOUSE NUMBERING GRID
- (2770) HOUSE NUMBER



515/61  
W. D. Kuhlman, et al  
#5A  
4.46A

#L. Crawford  
4A  
F.J.+D.G. PALGUTA

P.T. ROBSON  
# M.B. ROBSON 7/8/61  
# S. Beck  
# 69A. (P.F.)  
55.491 AC

P.T. ROBSON 9/25/4  
# S. Beck  
42.59A. (P.F.)

REPLAT  
L. CRAWFORD  
4  
1  
2  
3

MARTHA J. SHAFFER  
4  
2.05  
3  
2.04  
P. 187  
402.05  
MARTHA J. SHAFFER  
5  
2.06  
P. 123  
557.54

SHAPPER & SAN AMILARELLI  
# 13.509 AC  
# 6.203 AC. (BAL)  
# 7.144 AC. (BAL)

MARTH J. SHAFFER  
2  
2.03  
1  
2.02  
Vol 70 - 448.73 P. 186  
474.1  
535.2

LOUIS OHLIN PL.#3  
4# draw  
Vol. 49 - Pg 197

SONIA OHLIN  
1.99 AC

SONIA OHLIN  
3.41 AC

LOUIS OHLIN  
5.8 AC

63

45

47

27

2-01

2-03

2-02

9