

189

~~O.L. 441~~
O.L. 855
Steel Co.

The Carnegie Steel Co.

W
H
A
N
H
O
N
I
N
G

96

~~O.L. 442~~

O.L. 855

23.57 A.

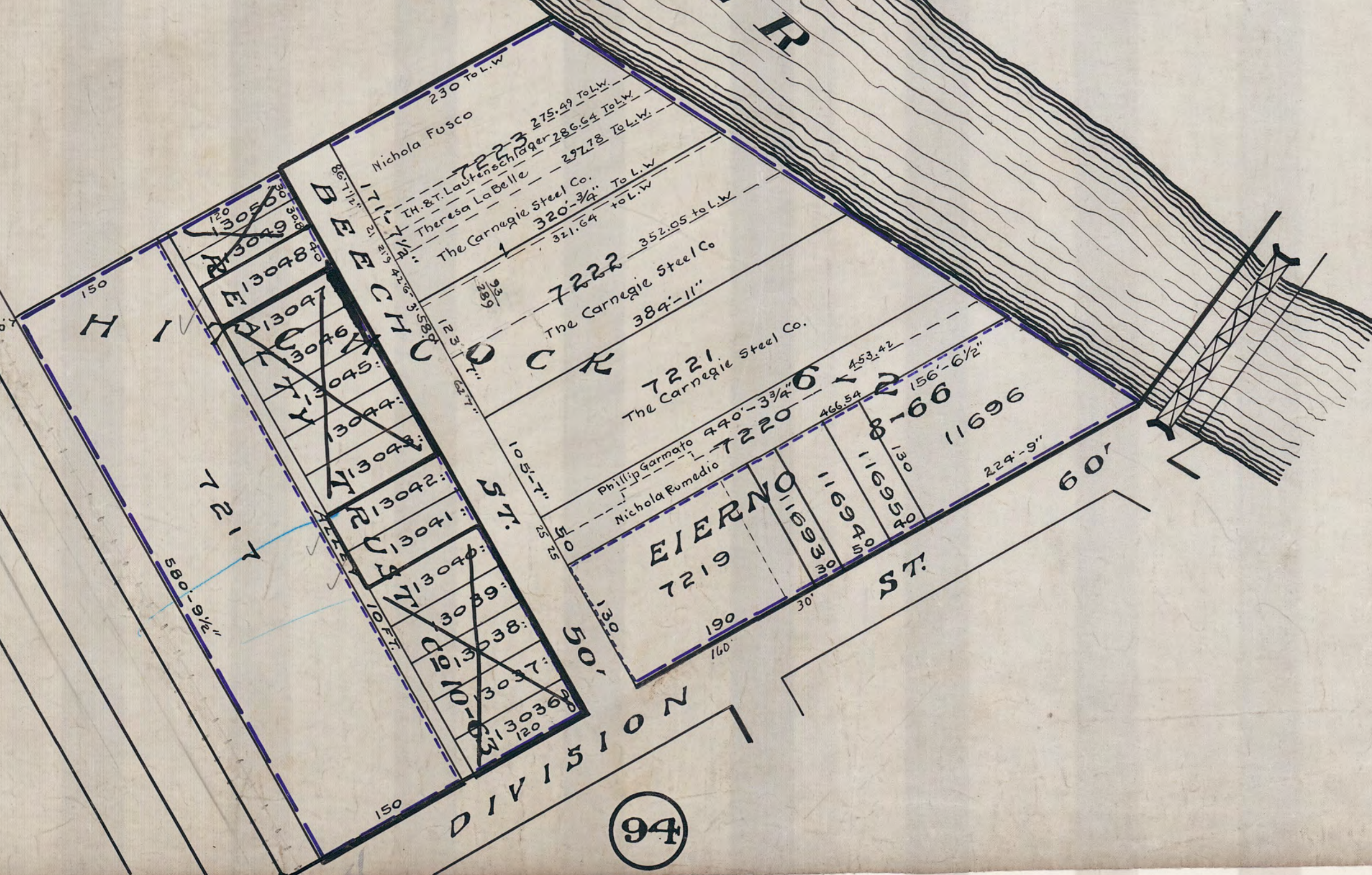
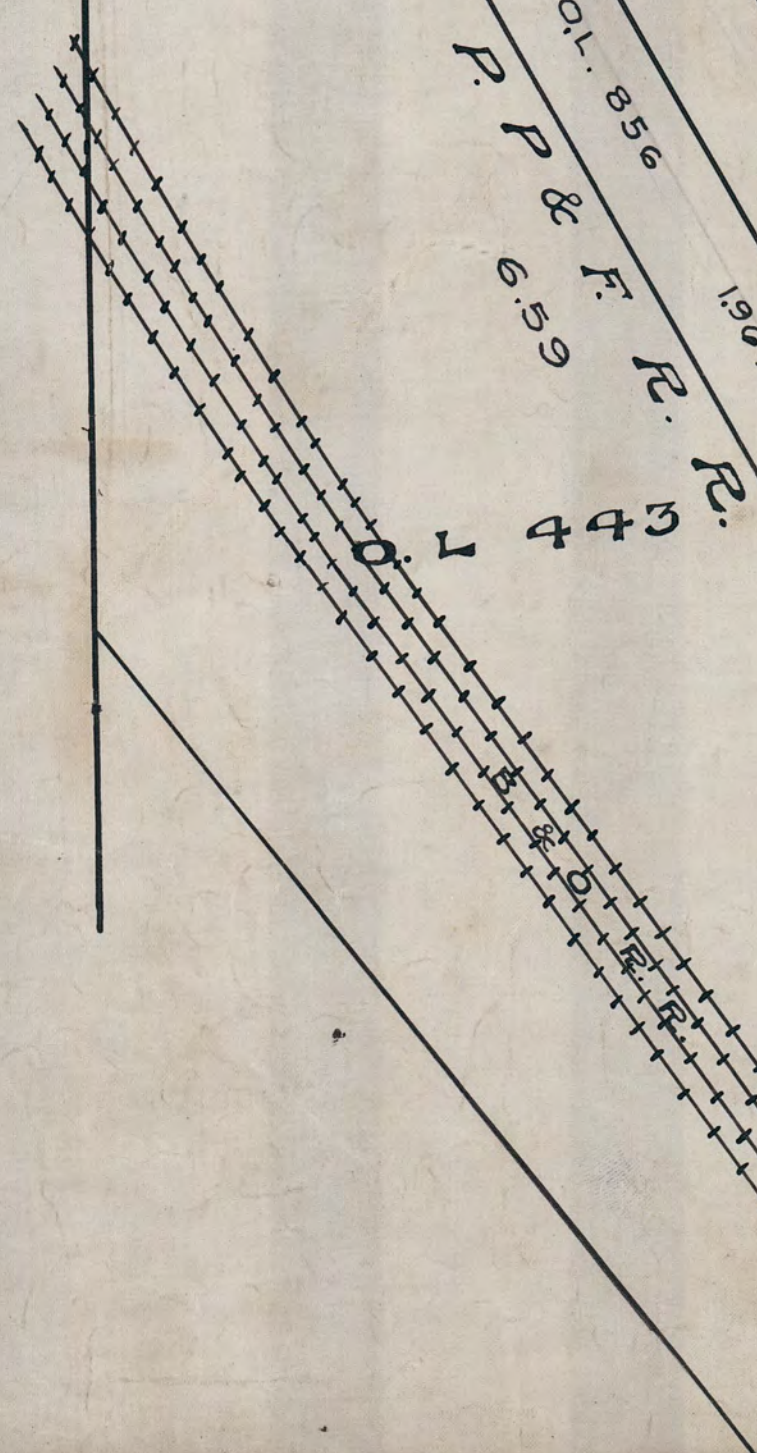
80.63
21.75
42.5
171.88 171.62

F. F. & F. R. R.
The Carnegie Steel Co.

O.L. 856
P. P. & F. R. R.
6.59
1.96 A.

~~O.L. 443~~

184



94

Scale 1"=100'