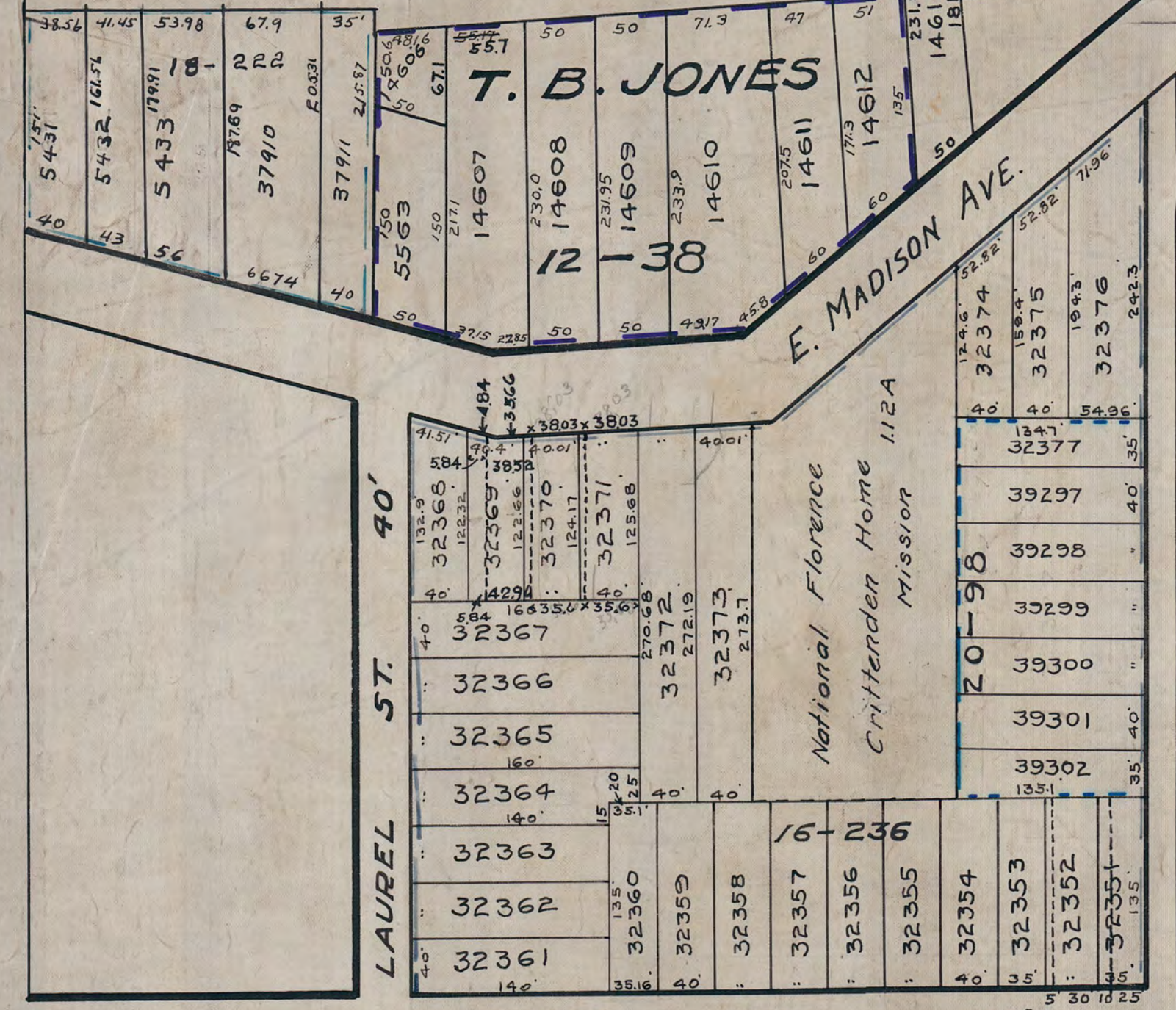


H.M.R.
K.P.P.

20
Mc GUFFEY RD. (ST.)



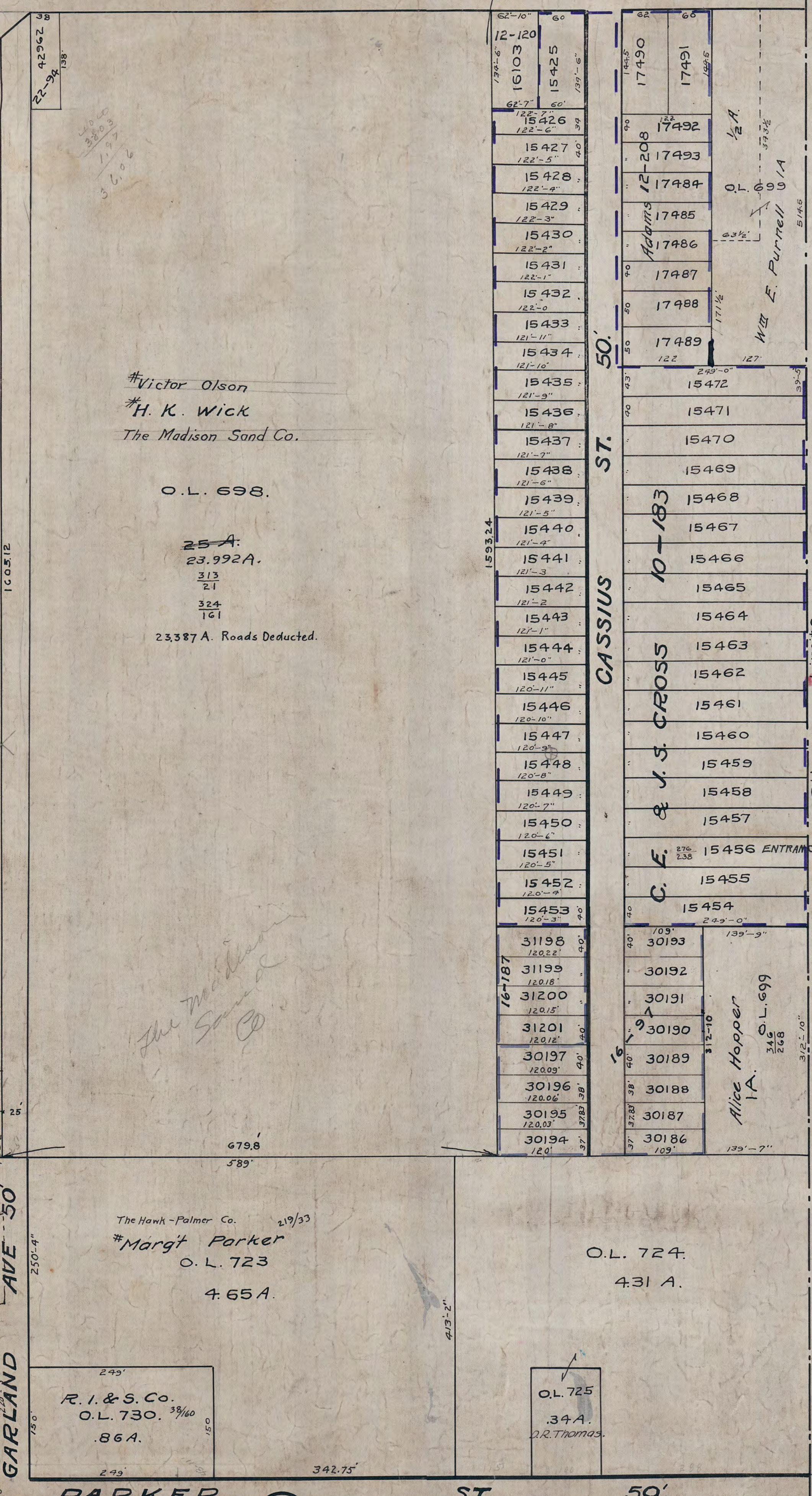
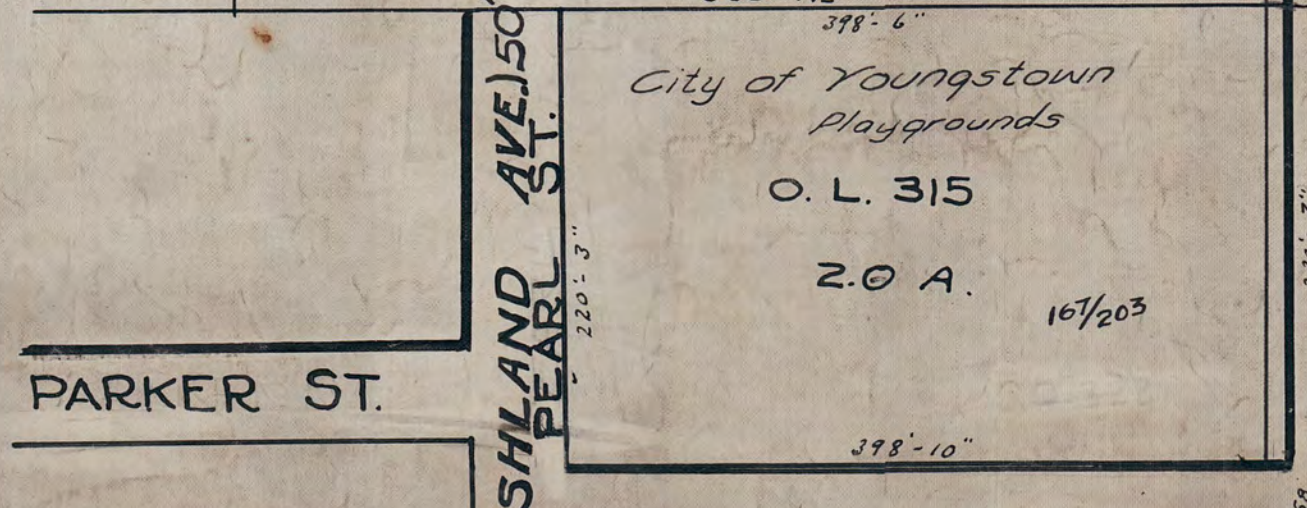
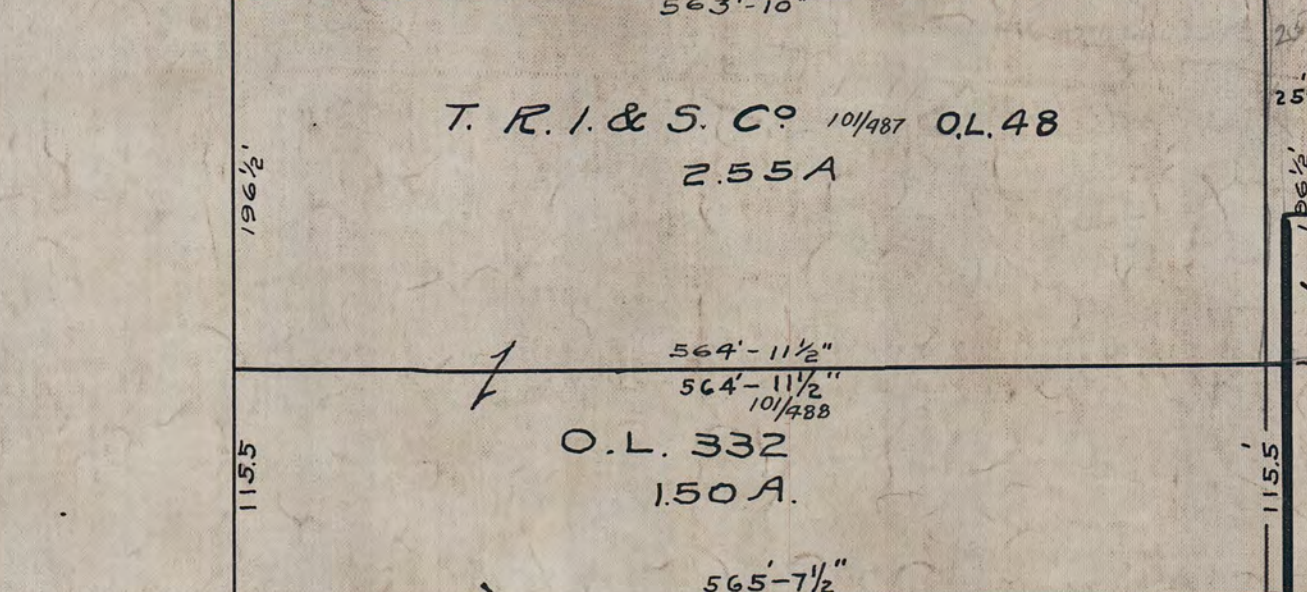
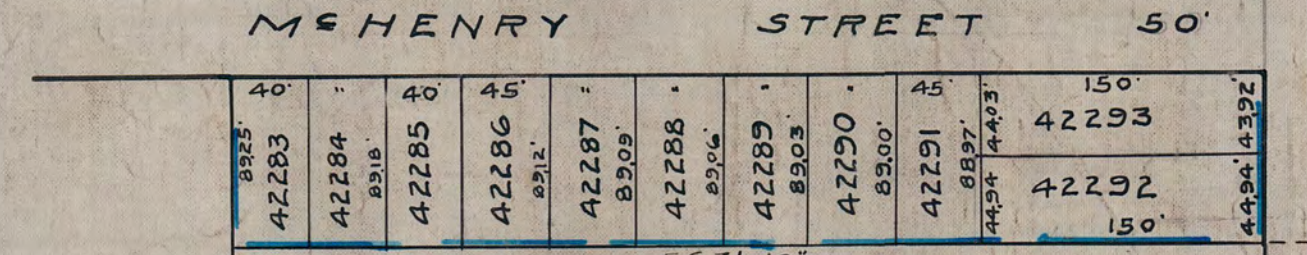
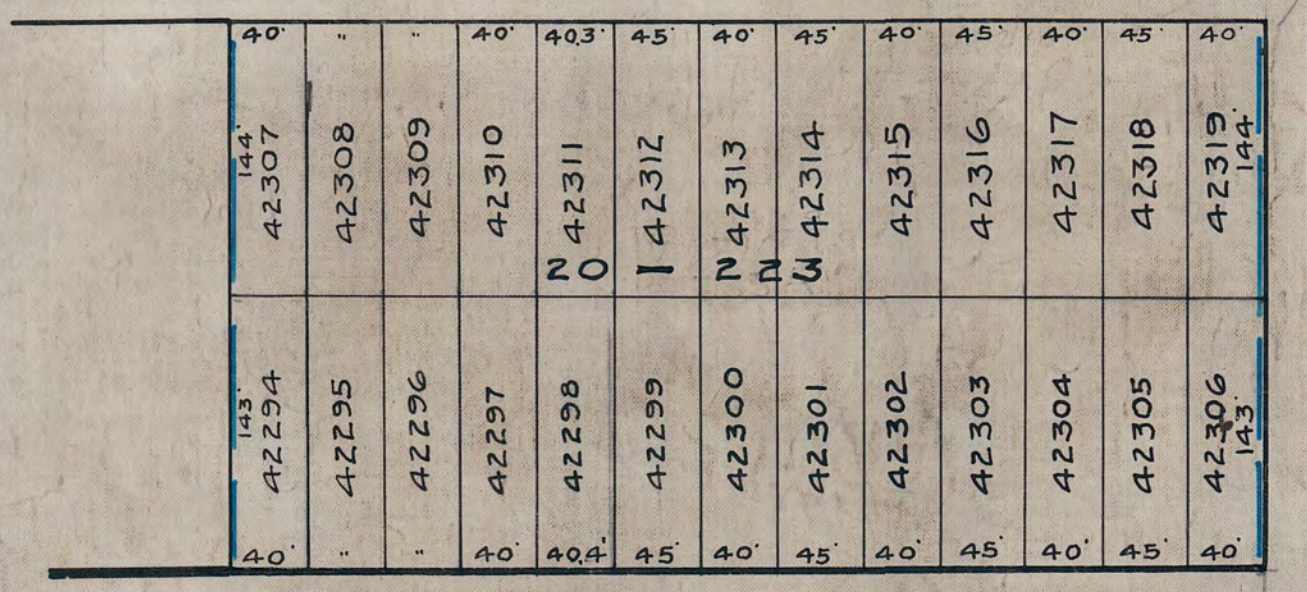
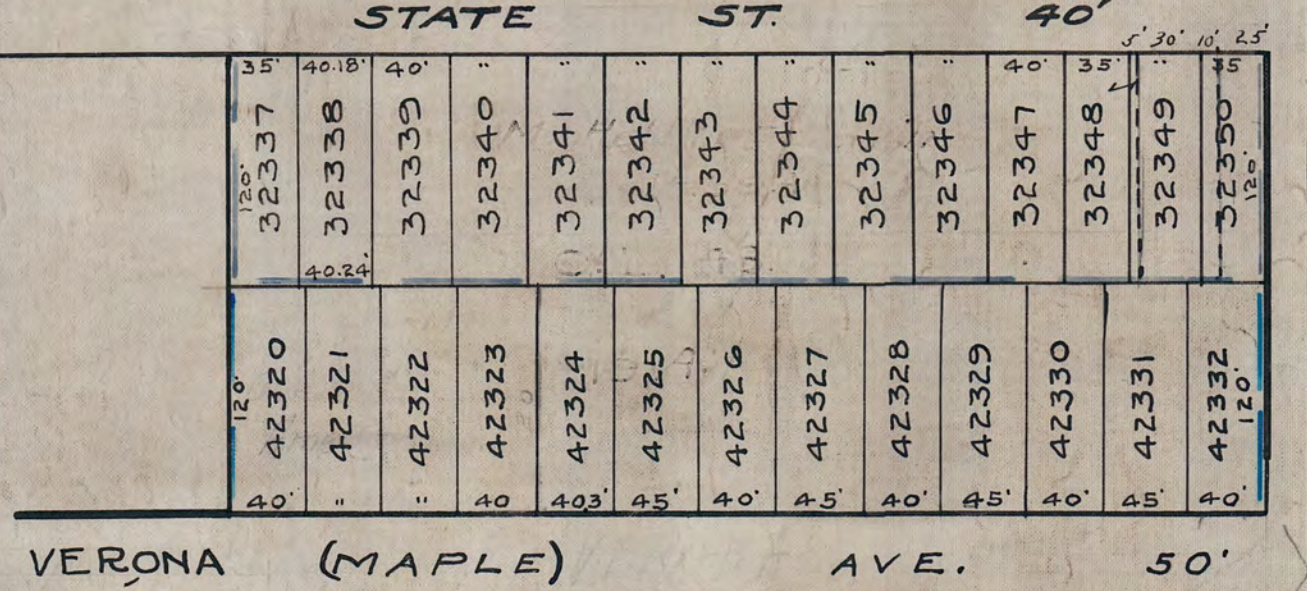
#Victor Olson
#H. K. Wick
The Madison Sand Co.

O.L. 698.

25-A
23,992A.

313
21
324
161
23,387 A. Roads Deducted.

21



Scale 1 in = 100 ft.

City Limits

OLD

26