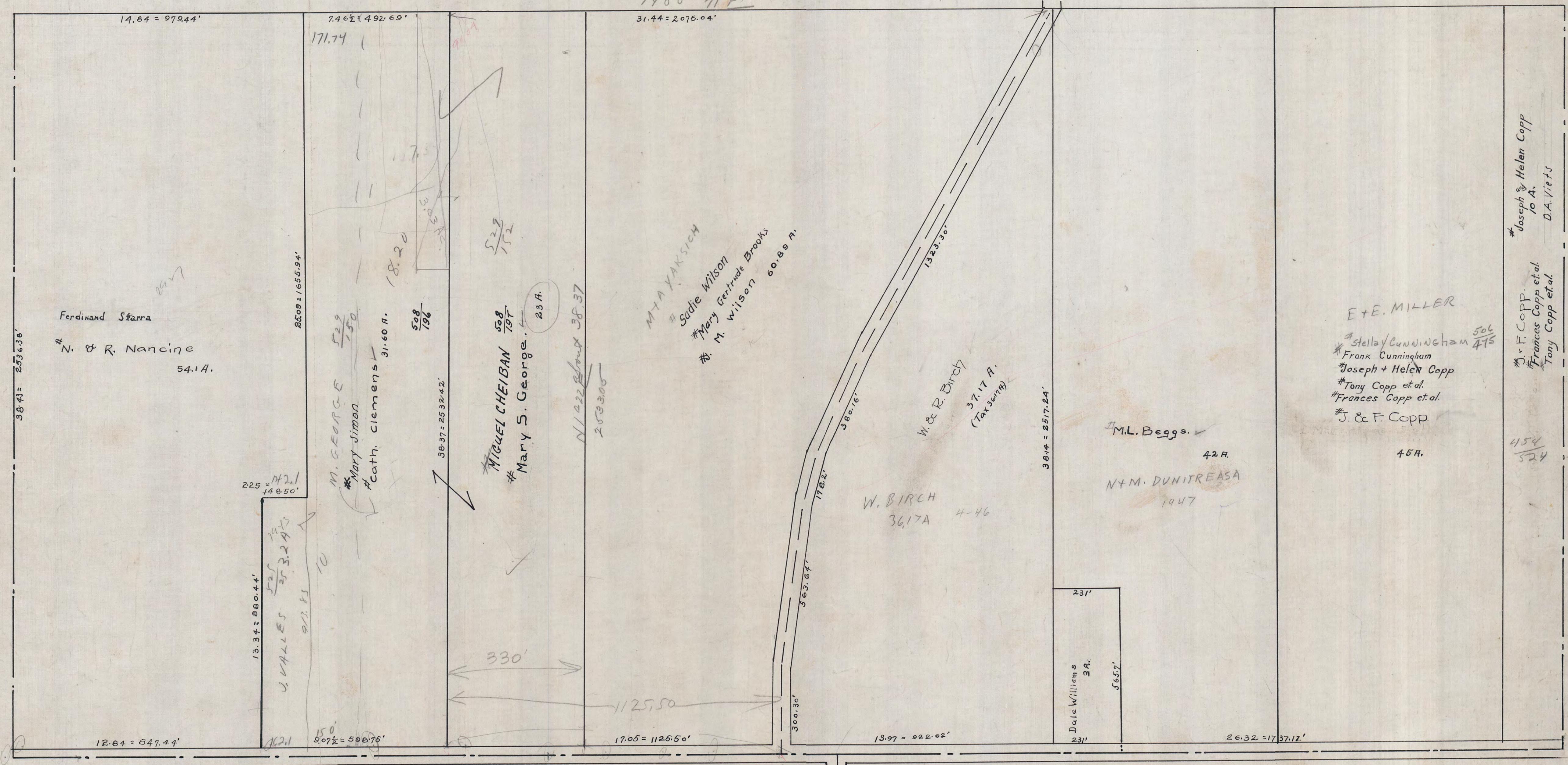


SOUTH PART GREAT LOT 2

157.50



14.84 = 979.44'

7.46 = 492.69'

31.44 = 2075.04'

N88°-41'E

Ferdinand Starra

N. & R. Nancine
54.1 A.

M. GEORGE
Mary Simon
Cath. Ciemens
31.60 A.

MIGUEL CHEIBAN
Mary S. George
23 A.

M. YAKSICH
Sadie Wilson
Mary Gertrude Brooks
M. Wilson
60.89 A.

W. BIRCH
36.17 A
4-46

W. & R. Birch
37.17 A.
(Tax 3.6777)

M.L. Beegs
42 A.

N.M. DUNITREASA
1447

E. & E. MILLER

* Stelley Cunningham 506
* Frank Cunningham 475
Joseph + Helen Copp
Tony Copp et al.
Frances Copp et al.
J. & F. Copp
45 A.

Joseph & Helen Copp
10 A.
D.A. Vietz

F. Copp
Frances Copp et al.
Tony Copp et al.

454
524

12.84 = 847.44'

9.07 = 590.75'

17.05 = 1126.50'

13.97 = 922.02'

26.32 = 1737.12'

S88°-56'E

795.5

225
148.50'

13.34 = 860.44'

VALUES
25.32 A.
812.85

2509 = 1655.94'

38.37 = 2532.42'

N 122 East 38.37
2533.00

330'

1125.50

300.30'

363.64'

1782'

380.16'

1323.30'

3814 = 2517.24'

231'
Date Williams
3 A.
5657'

1671.94
580.16
3036.11