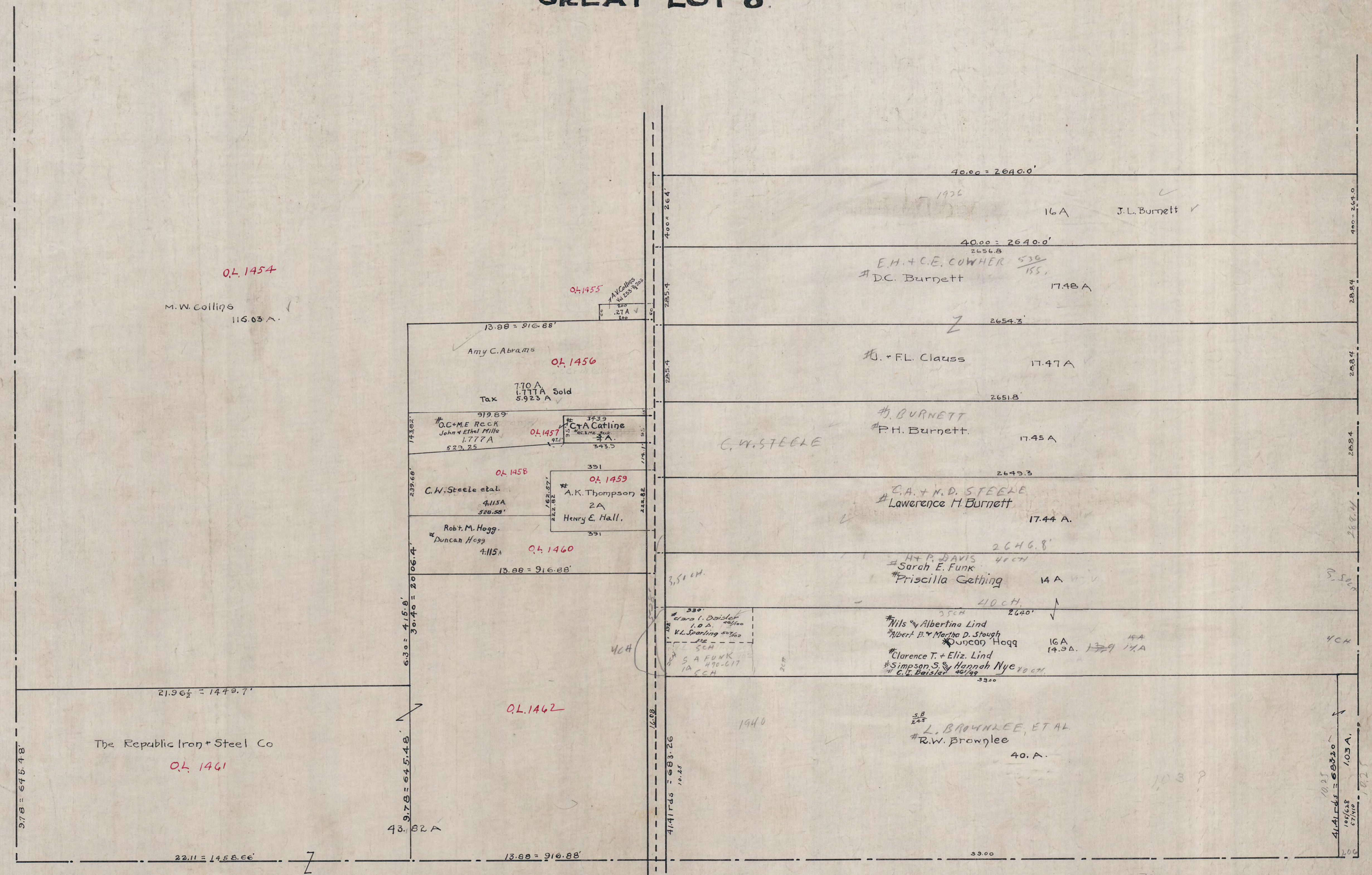


SOUTH PART GREAT LOT 8.



Q.L. 1454  
M.W. Collins  
116.03 A.

Amy C. Abrams  
Q.L. 1456  
Tax 770 A  
L. 1111 A Sold  
5.923 A

C.W. Steele et al.  
4.115 A  
520.50'

Robt. M. Hogg  
Duncan Hogg  
4.115 A

The Republic Iron + Steel Co  
Q.L. 1461

E.H. + C.E. COWHER  
# DC. Burnett  
17.48 A

H. + FL. Clauss  
17.47 A

# BURNETT  
# P.H. Burnett.  
17.45 A

C.A. + N.D. STEELE  
# Lawrence H. Burnett  
17.44 A.

H + P. DAVIS  
# Sarah E. Funk  
# Priscilla Gething  
14 A

# Nils + Albertina Lind  
# Albert B. + Martha D. Stough  
# Duncan Hogg  
# Clarence T. + Eliz. Lind  
# Simpson S. + Hannah Nye  
# C. T. Baister

L. BROWNLEE, ET AL  
# R.W. Brownlee  
40 A.

34  
66  
574  
74  
2574

41.4145 = 683.26  
10.25

10.25  
41.4145 = 683.26  
105/628  
67/100  
1.03 A.  
1.02