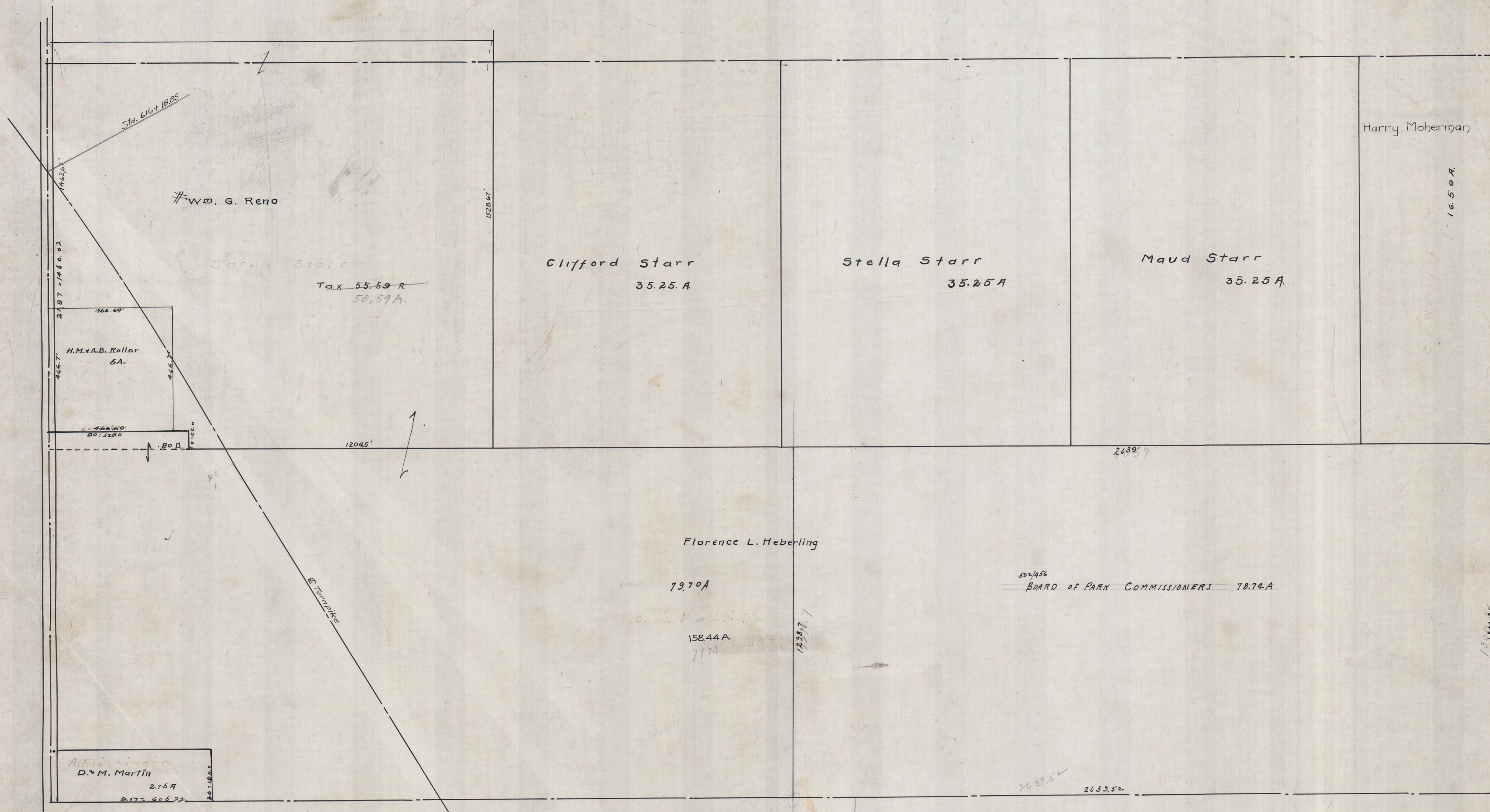


DIVISION 4 G. L. 9.



Std. 616+1885

#W.D. G. Reno

Sarah Starr

Tax 55.59 A  
50.59 A

Clifford Starr  
35.25 A

Stella Starr  
35.25 A

Maud Starr  
35.25 A

Harry Moherman

16.50 A

H.M.+A.B. Roller  
5A.

Florence L. Heberling

19.70 A

O. H. ...  
158.44 A  
79.70

52/456  
BOARD OF PARK COMMISSIONERS 78.74 A

A. F. ...  
D.M. Martin  
2.75 A

26.39.52  
26.39.52

13,300.36