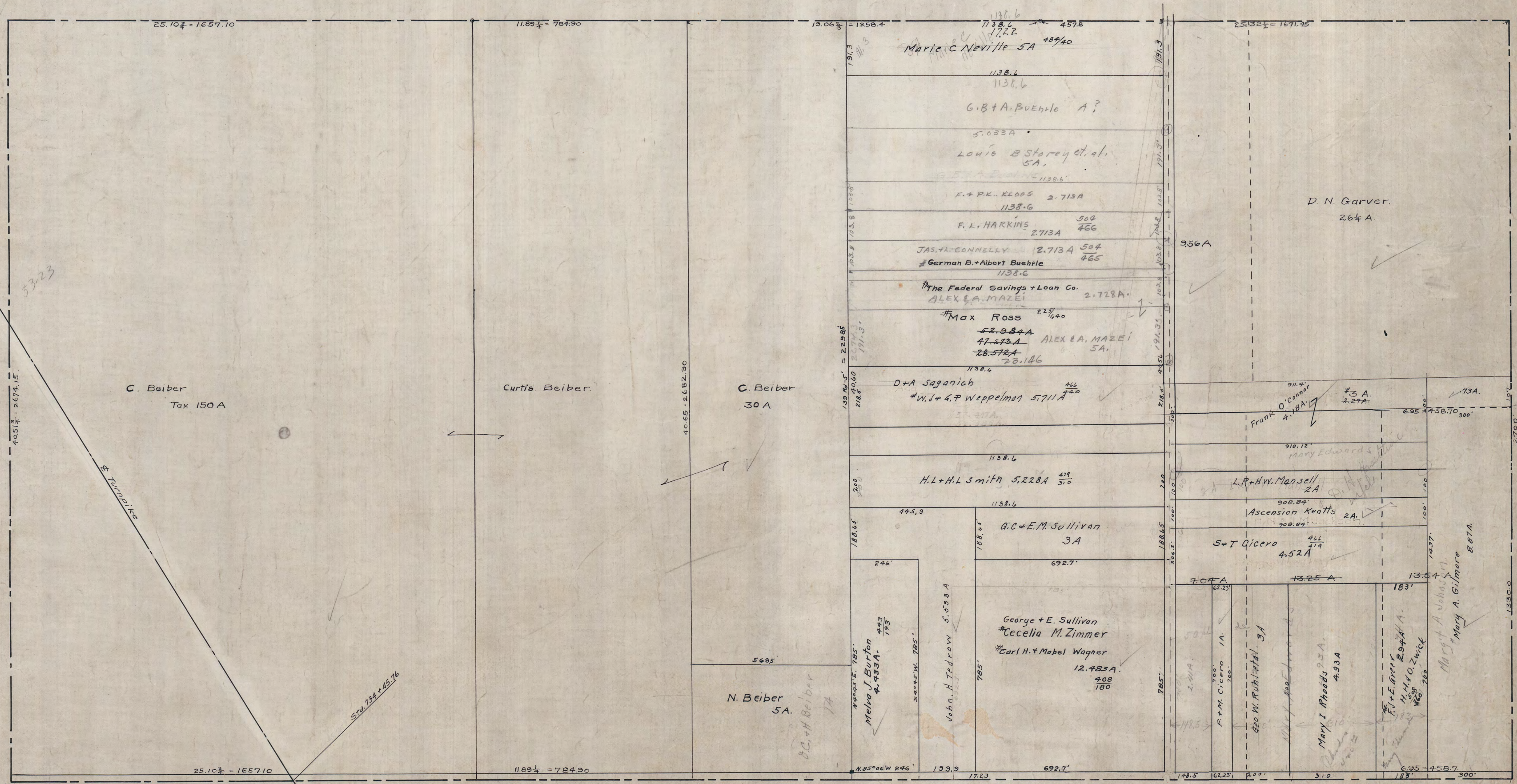


DIVISION 4, G.L. 16.



5323

C. Beiber
Tax 150 A

Curtis Beiber

C. Beiber
30 A

N. Beiber
5A.

Marie C. Neville 5A 48⁷/₄₀

G.B. & A. Buehle A?

Louis B. Storey et al.
5A.

F. & P.K. Kloos 2.713A

F.L. HARKINS 502
466

JAS. & CONNELLY 2.713A 504
465

German B. & Albert Buehle
1138.6

The Federal Savings & Loan Co.
ALEX. E. MAZEI 2.728A

Max Ross 22⁵/₄₀

ALEX. E. MAZEI 5A.

D. & A. Saganich 44
240

W. J. & G. P. Weppelman 5.711A

H.L. & H.L. Smith 5.228A 439
510

G.C. & E.M. Sullivan
3A

George & E. Sullivan
Cecelia M. Zimmer
Carl H. & Mabel Wagner
12.423A
408
180

D. N. Garver.
264 A.

Frank O'Connor
4.18A

Mary Edwards

L.P. & W. Mansell
2A

Ascension Keatts
2A

S. & T. Gicero
4.52A

Mary I. Rhoads
4.93A

F. & E. Grier
2.04A

H. & O. Zwick
2.04A

Mary A. Gilmore
8.07A.

692.7