

DIVISION 4 - LOT 32.

48560

L. Slagle  
55 1/2 A.

D. M. Walker  
28.6 A.

Wm B. Powell, Tr.  
# Melvin E. McCoskey 284/442  
# S. Huffman Est.

J. Henry 272  
70 Parson  
20705  
# 79.8 A.  
Deed 78,678 A.

S. A. R. S. Thompson  
# Allen Fredrick  
# 84.58 A  
63.58 A  
Vol. 226 Pg. 421

Sadie J. & Rollin S. Thompson  
# Allen J. & A.M. Fredrick 277/350

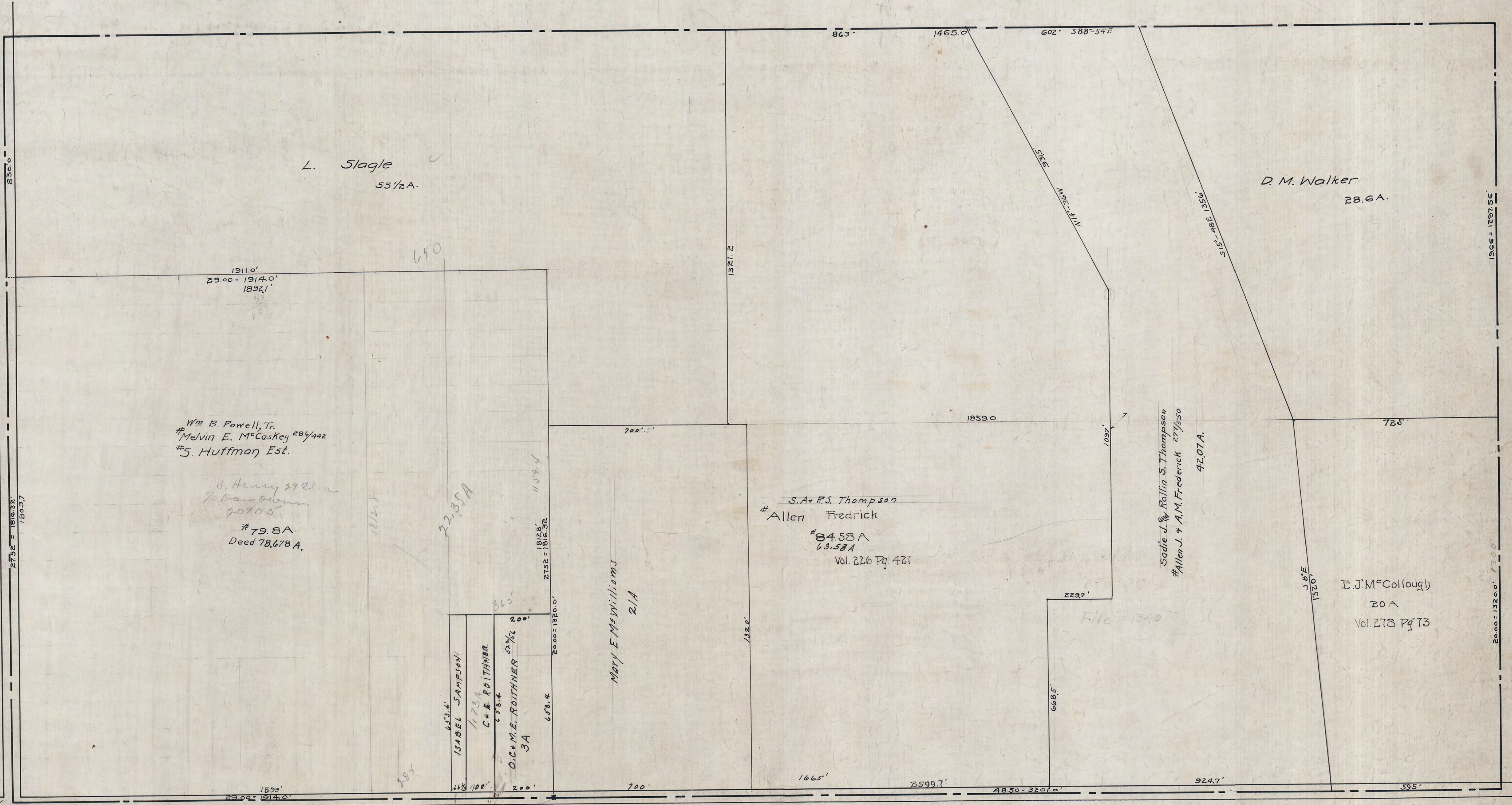
E. J. M. Collough  
20 A  
Vol. 278 Pg. 73

ISABEL SAMPSON

C + E ROITHNER

O. C. M. E. ROITHNER 5 1/2

MARY E. WILLIAMS  
21 A



836.0

275.2 = 1816.3 E  
780.7

1911.0'  
29.00 = 1914.0'  
1892.1'

650

200.5'

1859.0

1097'

725'

1812.8

22,351 A

1109.4

1812.8  
2152 = 1816.3 E

2000 = 1320.0'

653.4

200'

1320'

1665'

2599.7'

48.50 = 3701.6'

924.7'

59.5'

1916.6 = 1292.5'

2000 = 1320.0' 7300'

1899  
600  
17

1899  
1665  
924  
595  
3080.7