

NORTH PART  
**GREAT LOT 9.**

42  
 6  
 3512  
 252  
 2772  
 3960  
 2811.60

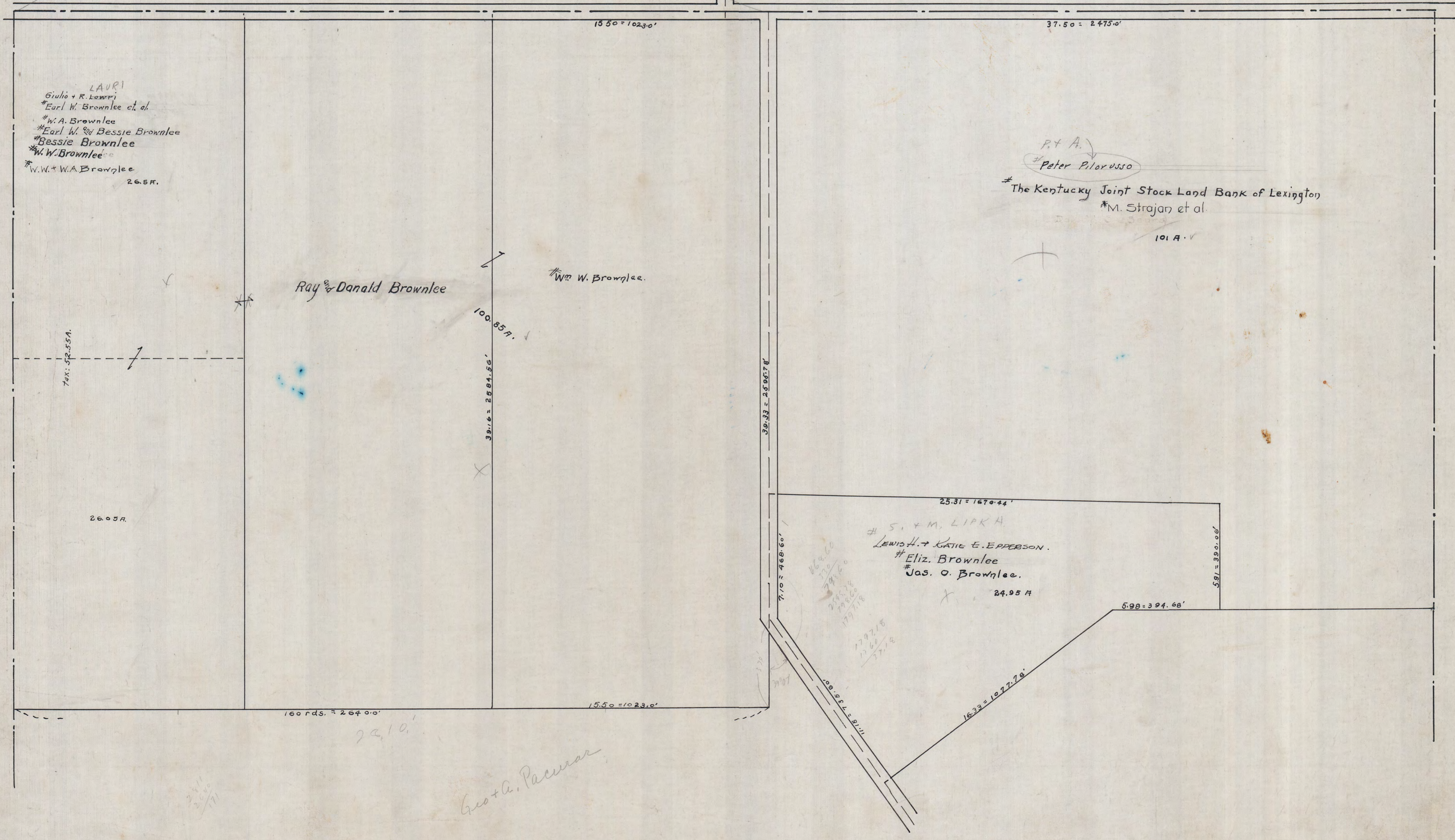
7.92  
 61  
 12/475.28  
 39.10

37  
 6  
 222  
 2772  
 37  
 2475  
 2811.60  
 5286.60

40  
 6  
 240  
 240  
 2640

160  
 165  
 800  
 960  
 160  
 26400

2811.60



Lauri  
 Giulio + R. Lowry  
 #Earl W. Brownlee et al.  
 #W. A. Brownlee  
 #Earl W. & Bessie Brownlee  
 #Bessie Brownlee  
 #W. W. Brownlee  
 #W. W. + W. A. Brownlee  
 26.5A.

P. + A.  
 #Peter Pistorusso  
 #The Kentucky Joint Stock Land Bank of Lexington  
 #M. Strajan et al.  
 101A.

Ray & Donald Brownlee  
 Wm. W. Brownlee.

25.31 = 1670.44'  
 # S. & M. LIPKA  
 LEWIS H. & KATHIE E. ERBSON.  
 #Eliz. Brownlee  
 #Jas. O. Brownlee.  
 24.95 A

Geo + A. Pacurar

2411  
 2000  
 7/11