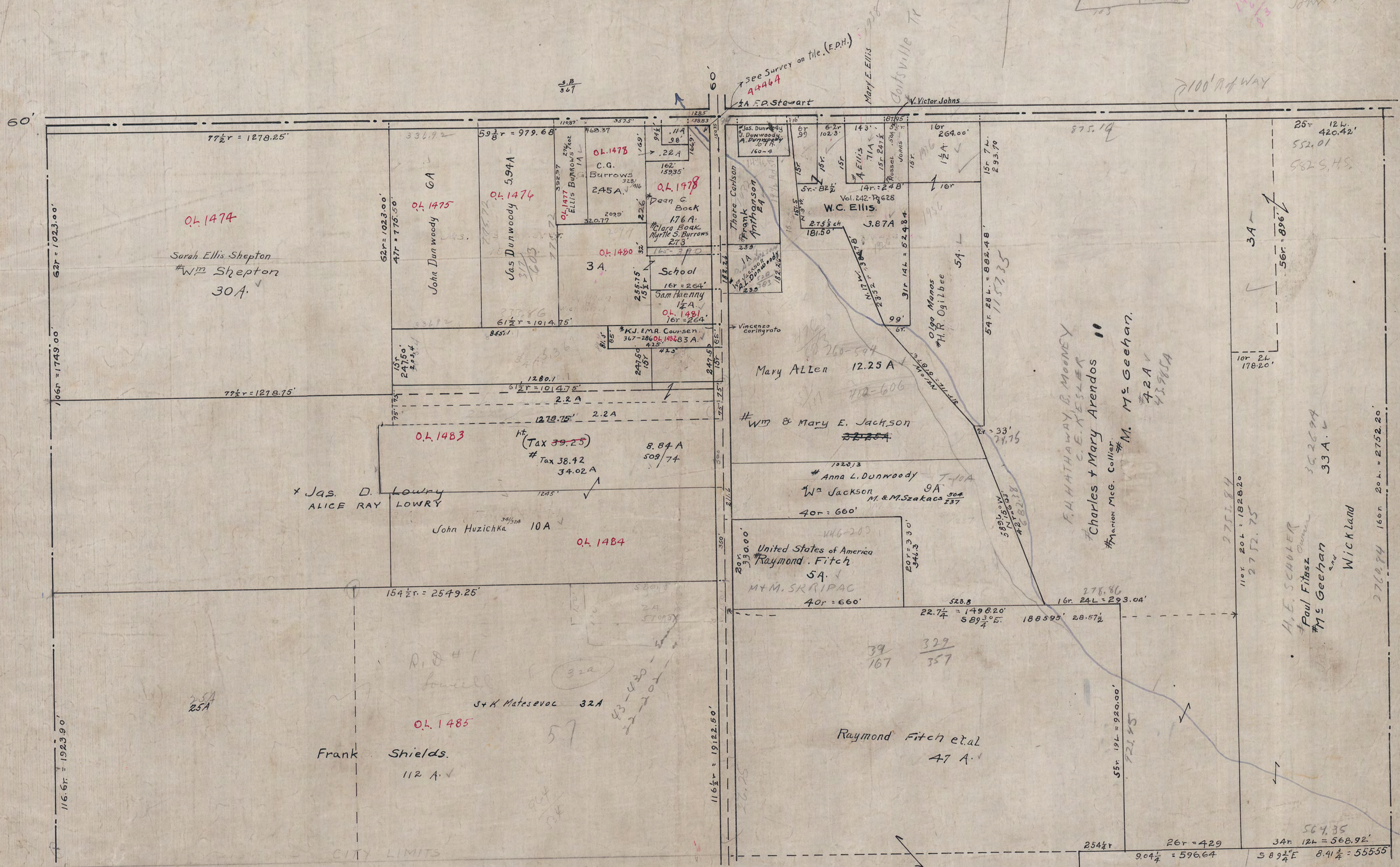


Coitsville Tw'p.

# NORTH PART GREAT LOT 17



O.L. 1474

Sarah Ellis Shepton  
Wm Shepton  
30A

O.L. 1475

John Dunwoody

O.L. 1476

Jas Dunwoody

O.L. 1477

Ellis Burrows

O.L. 1478

Dean C. Bock

O.L. 1480

School

O.L. 1481

Sam Flennery

O.L. 1483

(Tax 39.25)  
# Tax 38.42  
34.02 A

Jas. D. Lowry  
ALICE RAY LOWRY

O.L. 1484

John Huzichka

Mary Allen

Wm & Mary E. Jackson

Anna L. Dunwoody

Wm Jackson

United States of America  
Raymond Fitch

M & M. SKRIPAC

Raymond Fitch et al

Frank Shields

F.A. HATHAWAY B. MOONEY  
C.E. KESLER  
Charles + Mary Arendos

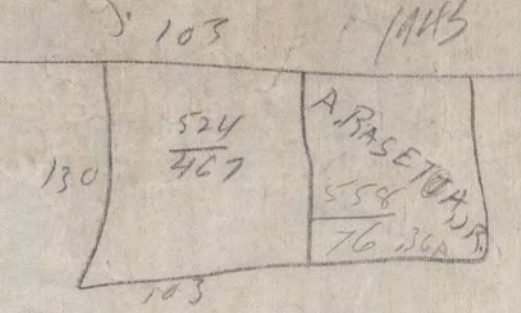
M. M. Geehan

A.E. SCHULER  
Paul Fitasz  
M. Geehan

Wick Land

62r = 1023.00  
106r = 1749.00  
116.6r = 1923.00

60'  
60'  
60'  
60'  
60'  
60'  
60'  
60'



100' R/W WAY

CITY LIMITS

55A

1895.95  
1498.20  
381.75

564.35  
34r 12L = 568.92  
8.9 1/2 E 8.41 1/2 = 555.55

2760.94 166r 20L = 2752.20

10r 2L 178.20'

2751.84  
110r 20L = 1828.20  
2752.75

3A  
56r = 896'

25r 12L 420.42'  
552.01  
582 S.H.S.

35.26 9A  
33A

155  
155  
155  
155  
155

318-22  
317-603

504-237  
500-175

J. HAMPTON

John Hampton 1943

See Survey on file (F.D.H.)  
A-4464

A. P. Stewart

Mary E. Ellis

Coitsville Twp

V. Victor Johns

Vincenzo Coringrato

Oigo Manos  
H. R. Ogilbee

15r 7L 293.70

99'

54r 28L = 802.48

1157.35

2r 33' 24.75

1020.13

9A 50A

M. & M. Szakacs

40r = 660'

20r 30' 341.3

528.8

22.7 1/2 = 1498.20  
589 3/4 = 55

39 167

329 357

16r 24L = 293.04'

180595' 28.572

55r 19L = 920.00'

254 1/2

26r = 429

9.04 1/2 = 596.64

8.41 1/2 = 555.55