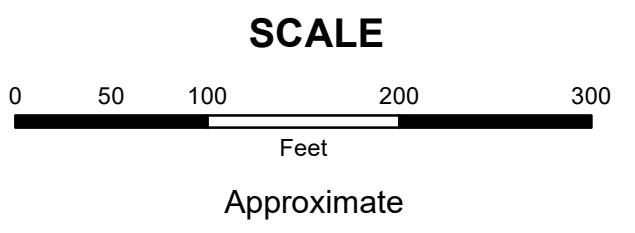


**MAHONING COUNTY
OHIO**

COITSVILLE TOWNSHIP
Great Lot 2

**TAX MAP
55009**



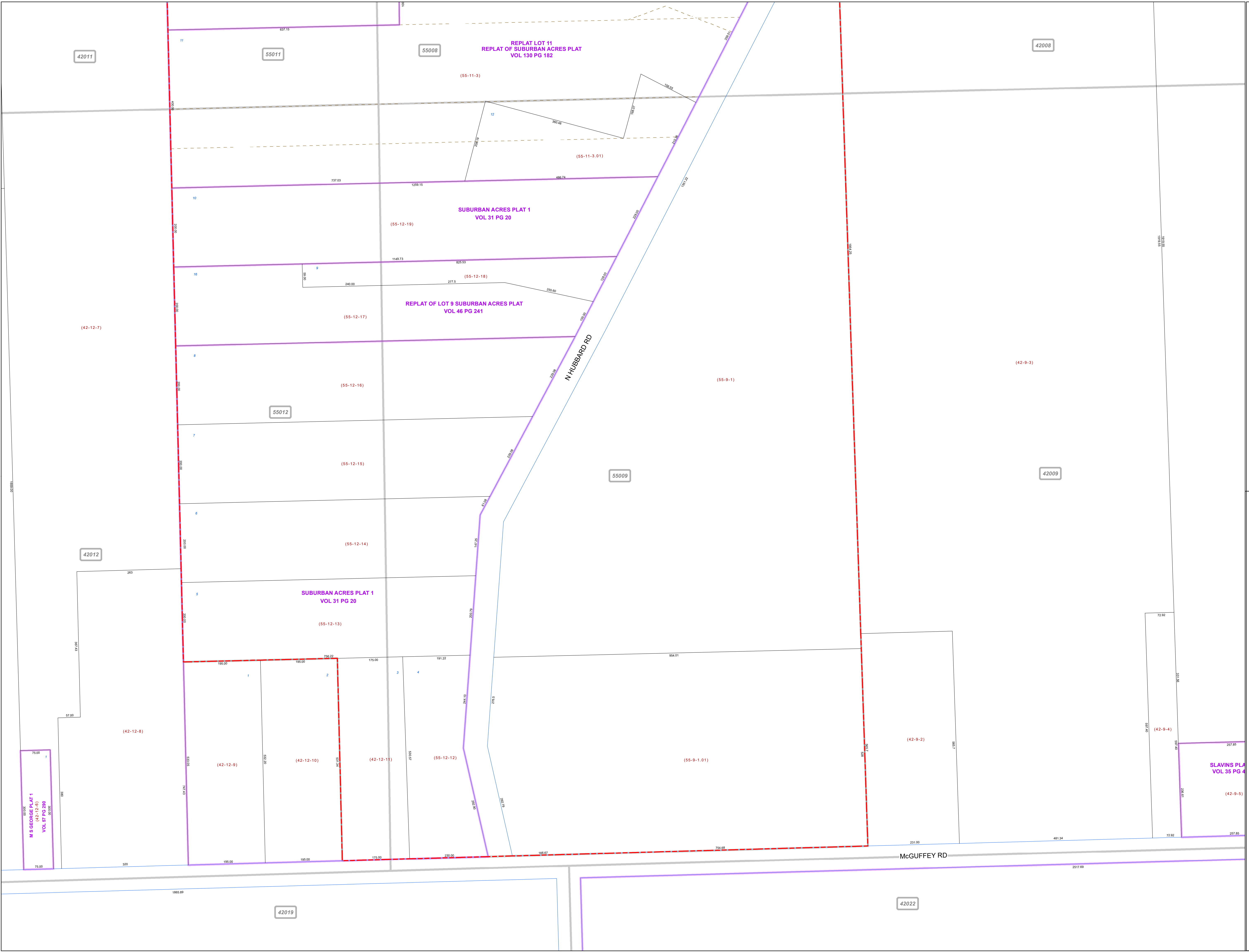
Print Date 12/31/2019

LEGEND

- COUNTY LINE
- TOWNSHIP LINE
- CITY LINE
- VILLAGE LINE
- PLAT OUTLINE
- PARCEL LINE
- OLD PARCEL LINE
- PHASE LINE
- ROAD ROW LINE
- RAILROAD ROW LINE
- (01-20-1.03) PARCEL ID NUMBER
- 345 LOT NUMBER
- BELL PLAT 1 PLAT NAME
- 01004 TAX MAP NUMBER

**COITSVILLE TOWNSHIP
Index Map**

42010	55007	42004
42011	55008	42005
42012	42008	42006
	55009	42009
42019	42022	42025



42011 55011 55008 42008

REPLAT LOT 11
REPLAT OF SUBURBAN ACRES PLAT
VOL 130 PG 182

(55-11-3)

11 12

156.65 360.48 188.07 272.34

(55-11-3.01)

237.03 1299.15 496.74

10

SUBURBAN ACRES PLAT 1
VOL 31 PG 20

(55-12-19)

1149.73 825.53

15

340.00 277.5 (55-12-18) 256.80

REPLAT OF LOT 9 SUBURBAN ACRES PLAT
VOL 46 PG 241

(55-12-17)

8

(55-12-16)

55012

7

(55-12-15)

5

(55-12-14)

SUBURBAN ACRES PLAT 1
VOL 31 PG 20

(55-12-13)

1

195.00 150.00 286.22 175.00 191.22

2 3 4

(42-12-8)

(42-12-9)

(42-12-10)

(42-12-11)

(55-12-12)

(55-9-1.01)

(42-9-2)

(42-9-3)

42009

55009

42012

1865.89

42019

McGUFFEY RD

231.00 481.34 72.92 257.85

42022

1936.81

SLAVINS PLAT
VOL 35 PG 4

(42-9-4)

(42-9-5)