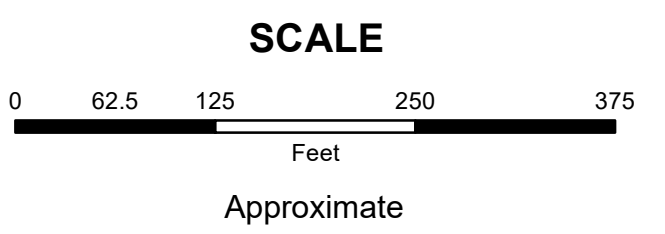


**MAHONING COUNTY
OHIO
MILTON TOWNSHIP**

**TAX MAP
51112**



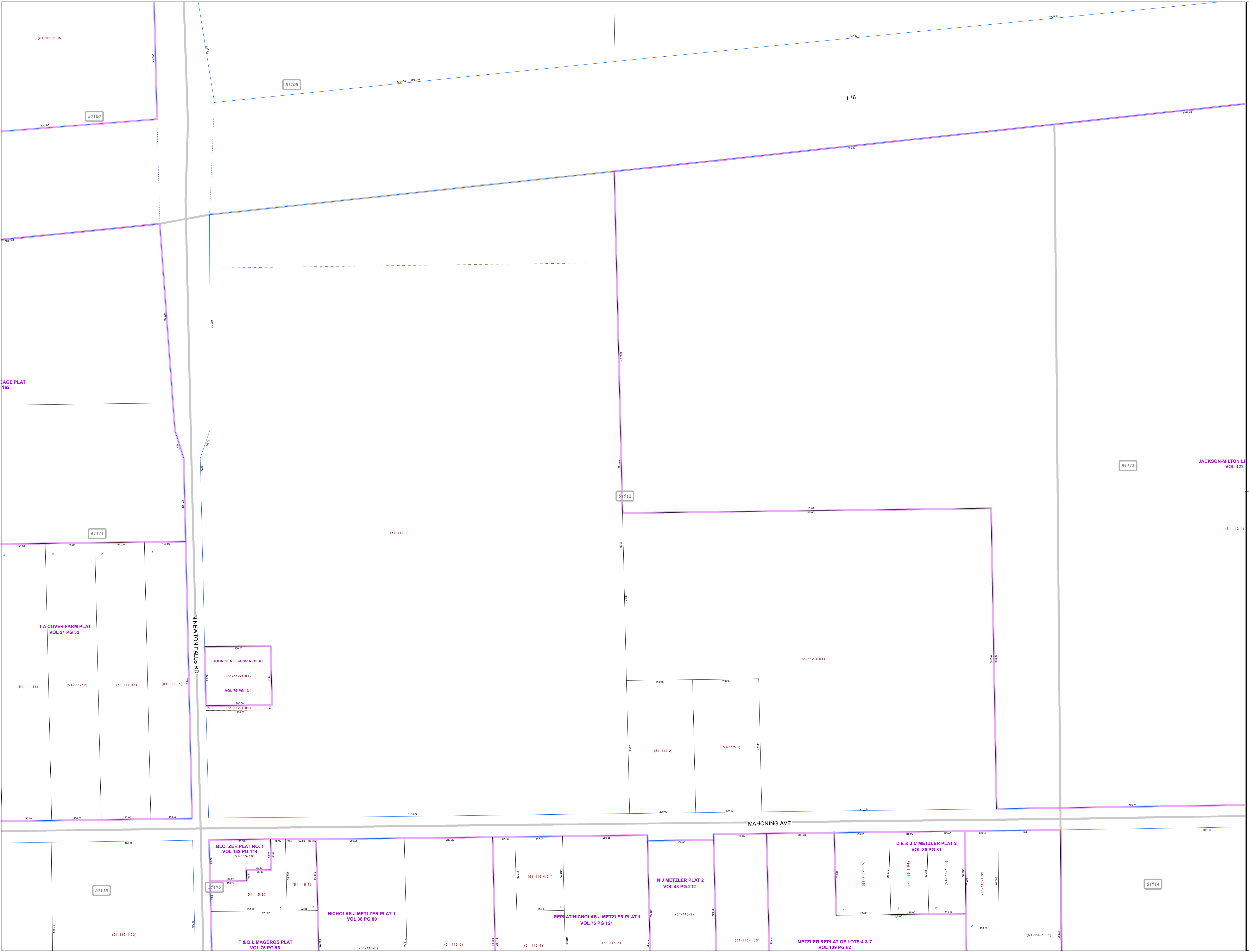
Print Date 12/31/2019

LEGEND

- COUNTY LINE
- TOWNSHIP LINE
- CITY LINE
- VILLAGE LINE
- PLAT OUTLINE
- PARCEL LINE
- OLD PARCEL LINE
- PHASE LINE
- ROAD ROW LINE
- RAILROAD ROW LINE
- (01-20-1.03) PARCEL ID NUMBER
- 345 LOT NUMBER
- BELL PLAT 1 PLAT NAME
- 01004 TAX MAP NUMBER

**MILTON TOWNSHIP
Index Map**

51101	51102	51103
51106	51105	51104
51111	51112	51113
51116	51115	51114
		51123



JOHN GENETTA SR REPLAT
(51-112-1.01)
VOL 79 PG 131
(51-112-1.02)

BLOTZER PLAT NO. 1
VOL 133 PG 144
(51-115-10)
(51-115-8)
T & B L MAGEROS PLAT
VOL 75 PG 96
(51-115-6)

NICHOLAS J METZLER PLAT 1
VOL 38 PG 89
(51-115-5)

REPLAT NICHOLAS J METZLER PLAT 1
VOL 75 PG 121
(51-115-4)

N J METZLER PLAT 2
VOL 48 PG 212
(51-115-3)

D E & J C METZLER PLAT 2
VOL 88 PG 81
(51-115-1.04)
(51-115-1.03)
(51-115-1.02)

METZLER REPLAT OF LOTS 4 & 7
VOL 109 PG 62
(51-115-1.06)