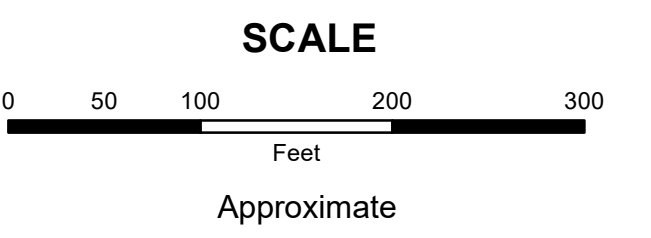


**MAHONING COUNTY  
OHIO  
MILTON TOWNSHIP**

**TAX MAP  
51101**



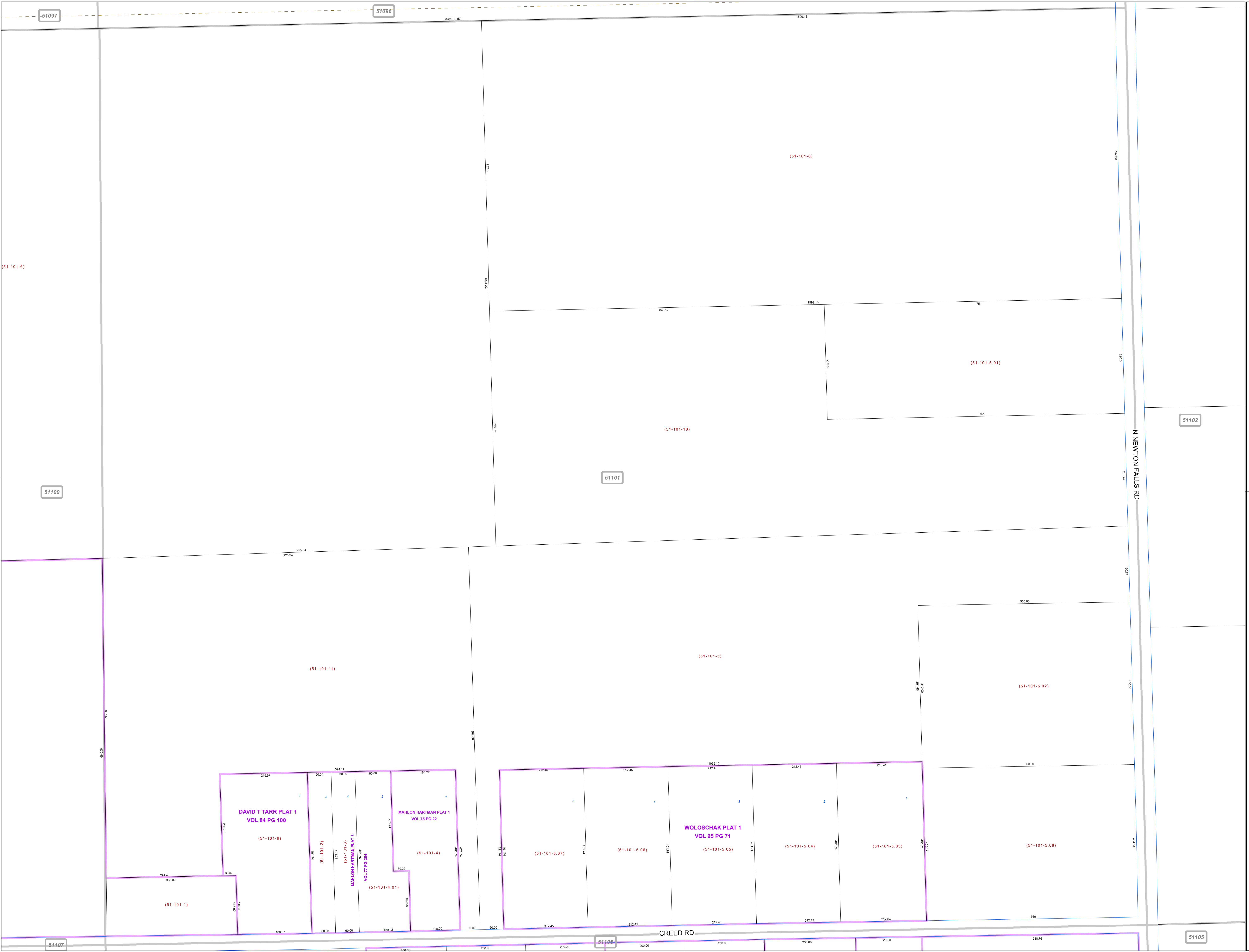
Print Date 12/31/2019

**LEGEND**

- COUNTY LINE
- TOWNSHIP LINE
- CITY LINE
- VILLAGE LINE
- PLAT OUTLINE
- PARCEL LINE
- OLD PARCEL LINE
- PHASE LINE
- ROAD ROW LINE
- RAILROAD ROW LINE
- (01-20-1.03) PARCEL ID NUMBER
- 345 LOT NUMBER
- BELL PLAT 1 PLAT NAME
- 01004 TAX MAP NUMBER

**MILTON TOWNSHIP  
Index Map**

51090	51091	51095
51097	51096	51095
51100	51101	51102
51107	51106	51105



51097

51096

3111.88 (D)

1599.18

(51-101-6)

(51-101-8)

(51-101-5.01)

(51-101-10)

51101

51100

51102

923.94

(51-101-11)

(51-101-5)

(51-101-5.02)

DAVID T TARR PLAT 1  
VOL 84 PG 100

(51-101-9)

MAHLON HARTMAN PLAT 1  
VOL 78 PG 22

(51-101-4)

MAHLON HARTMAN PLATS 2 & 3  
VOL 77 PG 254

(51-101-4.01)

WOLOSCHAK PLAT 1  
VOL 95 PG 71

(51-101-5.05)

(51-101-5.08)

CREED RD

N NEWTON FALLS RD

54107

54106

51105