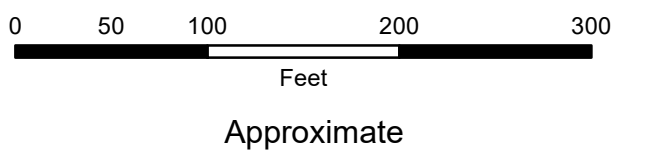


MAHONING COUNTY
OHIO
MILTON TOWNSHIP

TAX MAP
51047



SCALE

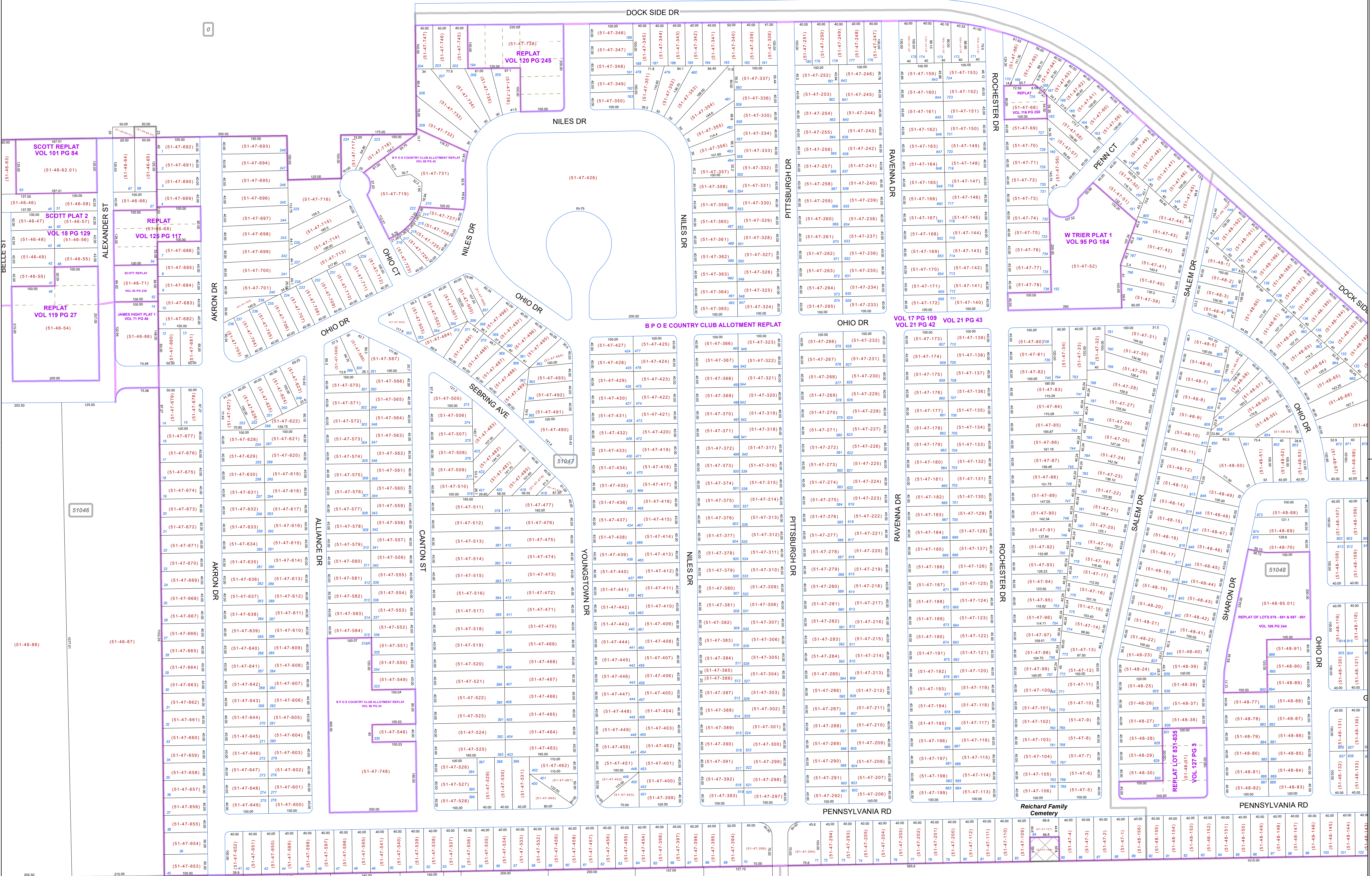
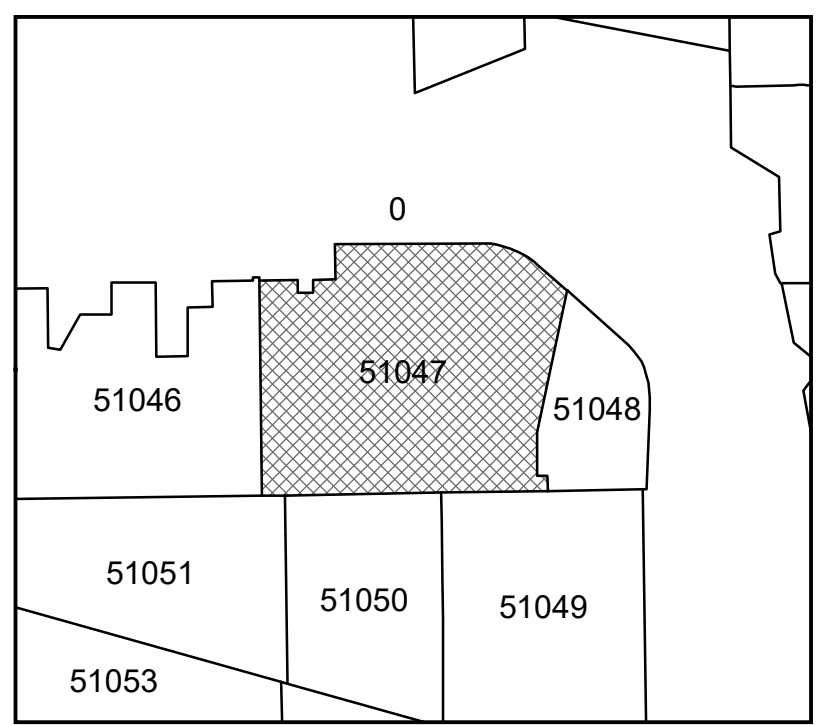


Print Date 12/31/2019

LEGEND

- COUNTY LINE
- TOWNSHIP LINE
- CITY LINE
- VILLAGE LINE
- PLAT OUTLINE
- PARCEL LINE
- OLD PARCEL LINE
- PHASE LINE
- ROAD ROW LINE
- RAILROAD ROW LINE
- PARCEL ID NUMBER (01-20-1.03)
- LOT NUMBER (345)
- PLAT NAME (BELL PLAT 1)
- TAX MAP NUMBER (01004)

MILTON TOWNSHIP
Index Map



0

51046

51050

51049

51051