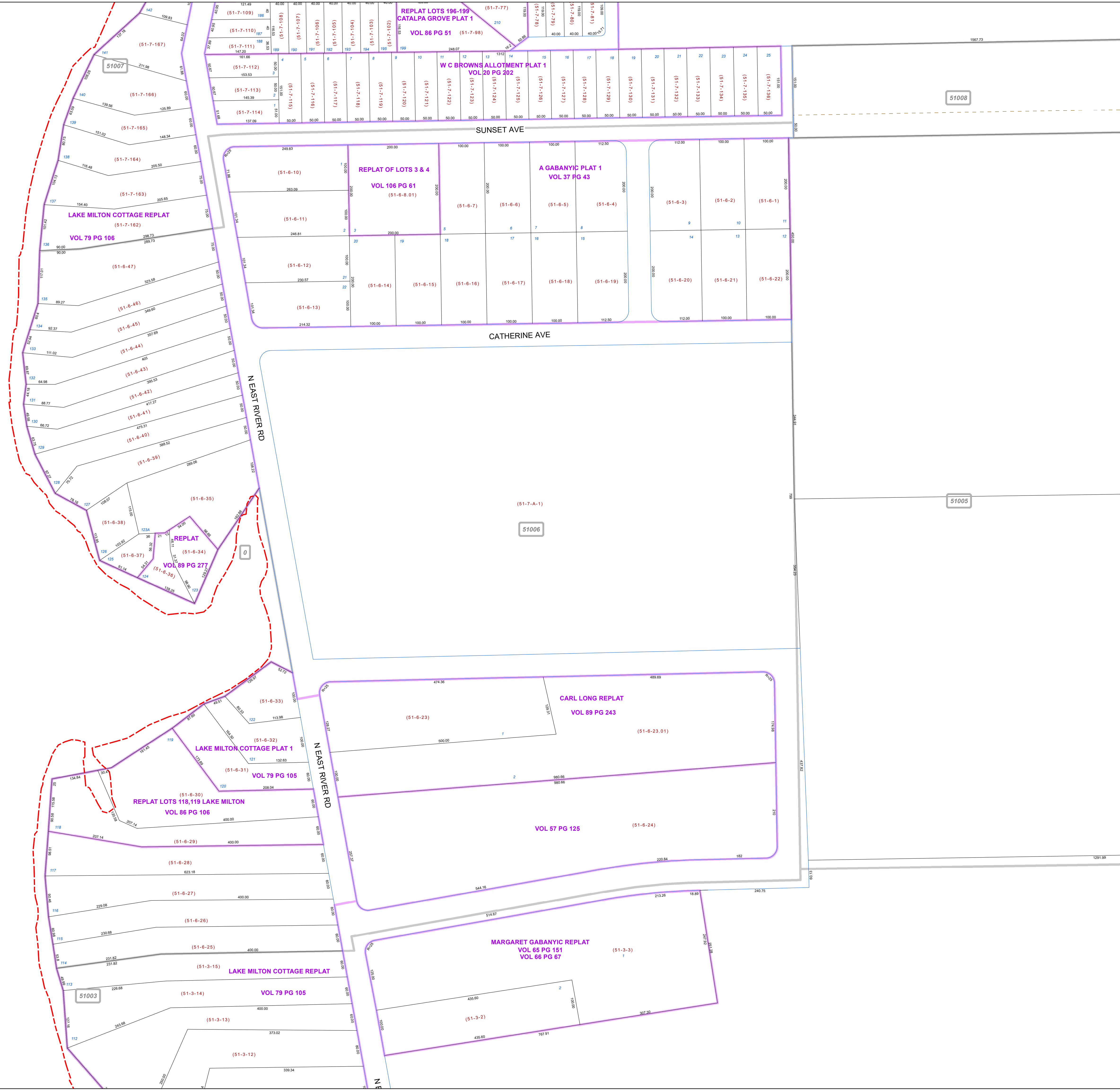


MAHONING COUNTY
OHIO
MILTON TOWNSHIP
Great Lot 12 NS

TAX MAP
51006



Print Date 12/31/2019



LEGEND

- COUNTY LINE
- TOWNSHIP LINE
- CITY LINE
- VILLAGE LINE
- PLAT OUTLINE
- PARCEL LINE
- OLD PARCEL LINE
- PHASE LINE
- ROAD ROW LINE
- RAILROAD ROW LINE
- (01-20-1.03) PARCEL ID NUMBER
- 345 LOT NUMBER
- BELL PLAT 1 PLAT NAME
- 01004 TAX MAP NUMBER

MILTON TOWNSHIP
Index Map

