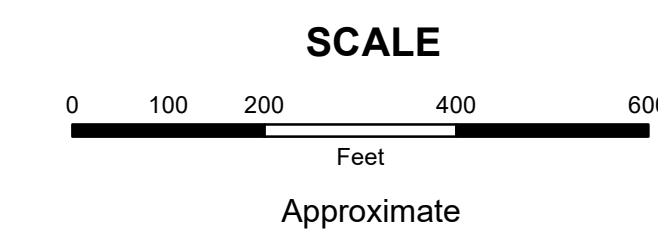


MAHONING COUNTY
OHIO
JACKSON TOWNSHIP
Lots 1, 2, Tract 16

TAX MAP
50052



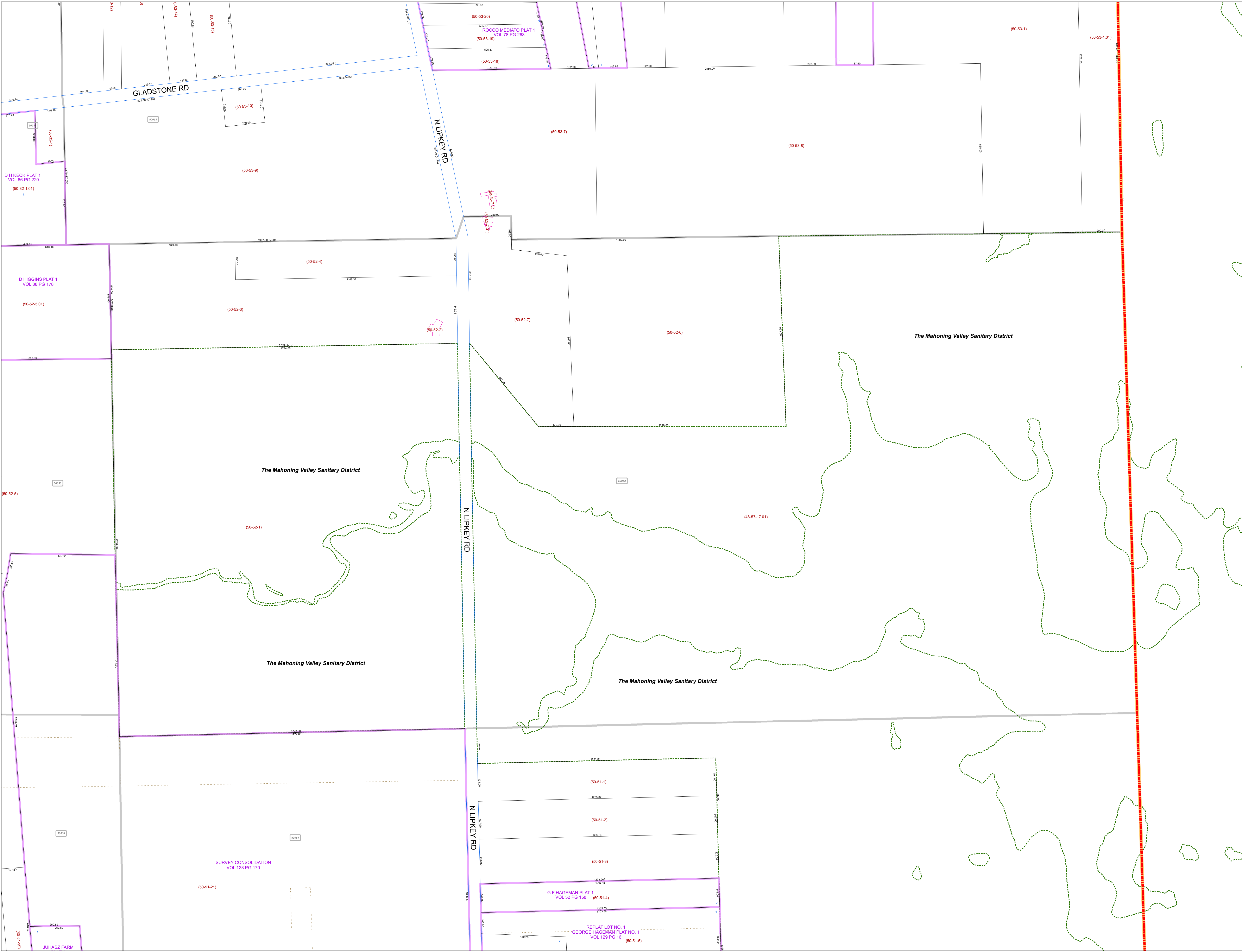
Print Date 12/31/2019

LEGEND

- COUNTY LINE
- TOWNSHIP LINE
- CITY LINE
- VILLAGE LINE
- PLAT OUTLINE
- PARCEL LINE
- OLD PARCEL LINE
- PHASE LINE
- ROAD ROW LINE
- RAILROAD ROW LINE
- (01-20-1.03) PARCEL ID NUMBER
- 345 LOT NUMBER
- BELL PLAT 1 PLAT NAME
- 01004 TAX MAP NUMBER

JACKSON TOWNSHIP
Index Map

50032	50053
50033	50052
50034	50051
50035	50050



D H KECK PLAT 1
 VOL 86 PG 220
 (50-32-1.01)
 2

D HIGGINS PLAT 1
 VOL 88 PG 178
 (50-52-5.01)

JUHASZ FARM
 (50-1-5.05)
 1

(50-53-20)
 ROCCO MEDIATO PLAT 1
 VOL 78 PG 283
 (50-53-19)
 (50-53-18)
 (50-53-17)

(50-53-18)
 (50-53-17)
 (50-53-16)

SURVEY CONSOLIDATION
 VOL 123 PG 170
 (50-51-21)

G F HAGEMAN PLAT 1
 VOL 52 PG 158
 (50-51-4)

REPLAT LOT NO. 1
 GEORGE HAGEMAN PLAT NO. 1
 VOL 129 PG 16
 (50-51-5)
 2

The Mahoning Valley Sanitary District

The Mahoning Valley Sanitary District

The Mahoning Valley Sanitary District

The Mahoning Valley Sanitary District