

**MAHONING COUNTY
OHIO**
COITSVILLE TOWNSHIP
Great Lot 13

**TAX MAP
42044**



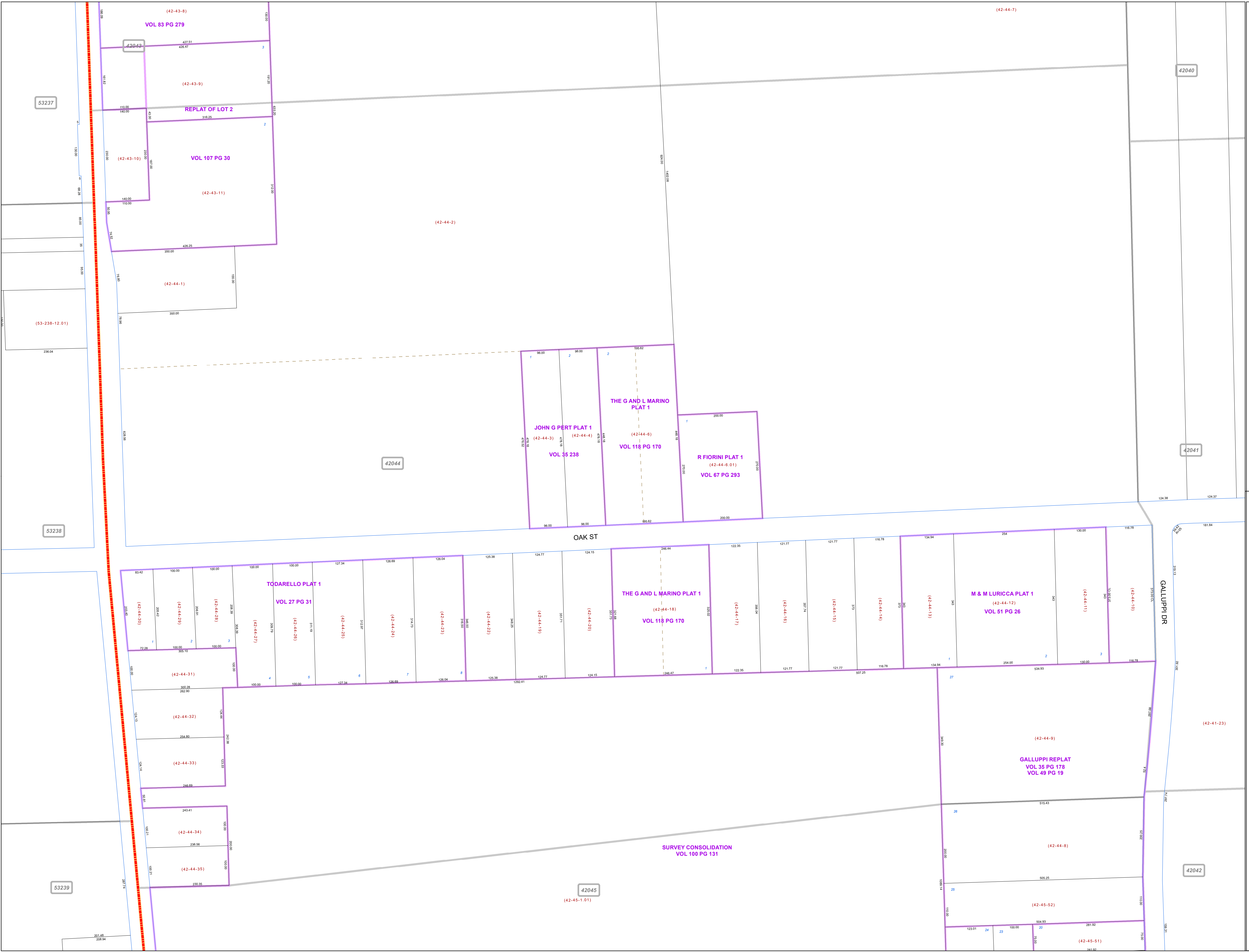
Print Date 12/31/2019

LEGEND

- COUNTY LINE
- TOWNSHIP LINE
- CITY LINE
- VILLAGE LINE
- PLAT OUTLINE
- PARCEL LINE
- OLD PARCEL LINE
- PHASE LINE
- ROAD ROW LINE
- RAILROAD ROW LINE
- (01-20-1.03) PARCEL ID NUMBER
- 345 LOT NUMBER
- BELL PLAT 1 PLAT NAME
- 01004 TAX MAP NUMBER

**COITSVILLE TOWNSHIP
Index Map**

53236	42018	
53237	42043	42040
53238	42044	42041
53239	42045	42042



53237

42040

53238

42041

53239

42045

42042

42044

(42-45-1.01)

(42-41-23)

(42-43-8)

(42-43-9)

REPLAT OF LOT 2

VOL 107 PG 30

(42-43-11)

(42-44-1)

(42-44-2)

JOHN G PERT PLAT 1

(42-44-3)

VOL 35 PG 238

THE G AND L MARINO PLAT 1

(42-44-4)

VOL 118 PG 170

(42-44-6)

R FIORINI PLAT 1

(42-44-6.01)

VOL 67 PG 293

OAK ST

TODARELLO PLAT 1

VOL 27 PG 31

THE G AND L MARINO PLAT 1

VOL 118 PG 170

M & M LURICCA PLAT 1

VOL 51 PG 26

GALLUPPI REPLAT

VOL 35 PG 178

VOL 49 PG 19

SURVEY CONSOLIDATION

VOL 100 PG 131

GALLUPPI DR