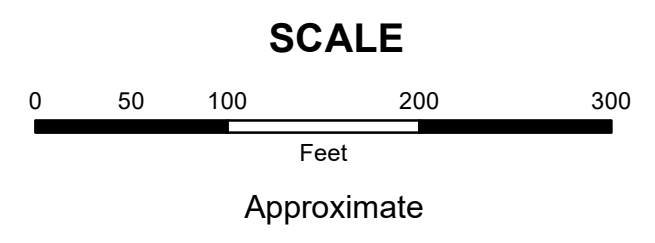


MAHONING COUNTY
OHIO
COITSVILLE TOWNSHIP
Great Lot 2
TAX MAP
42009



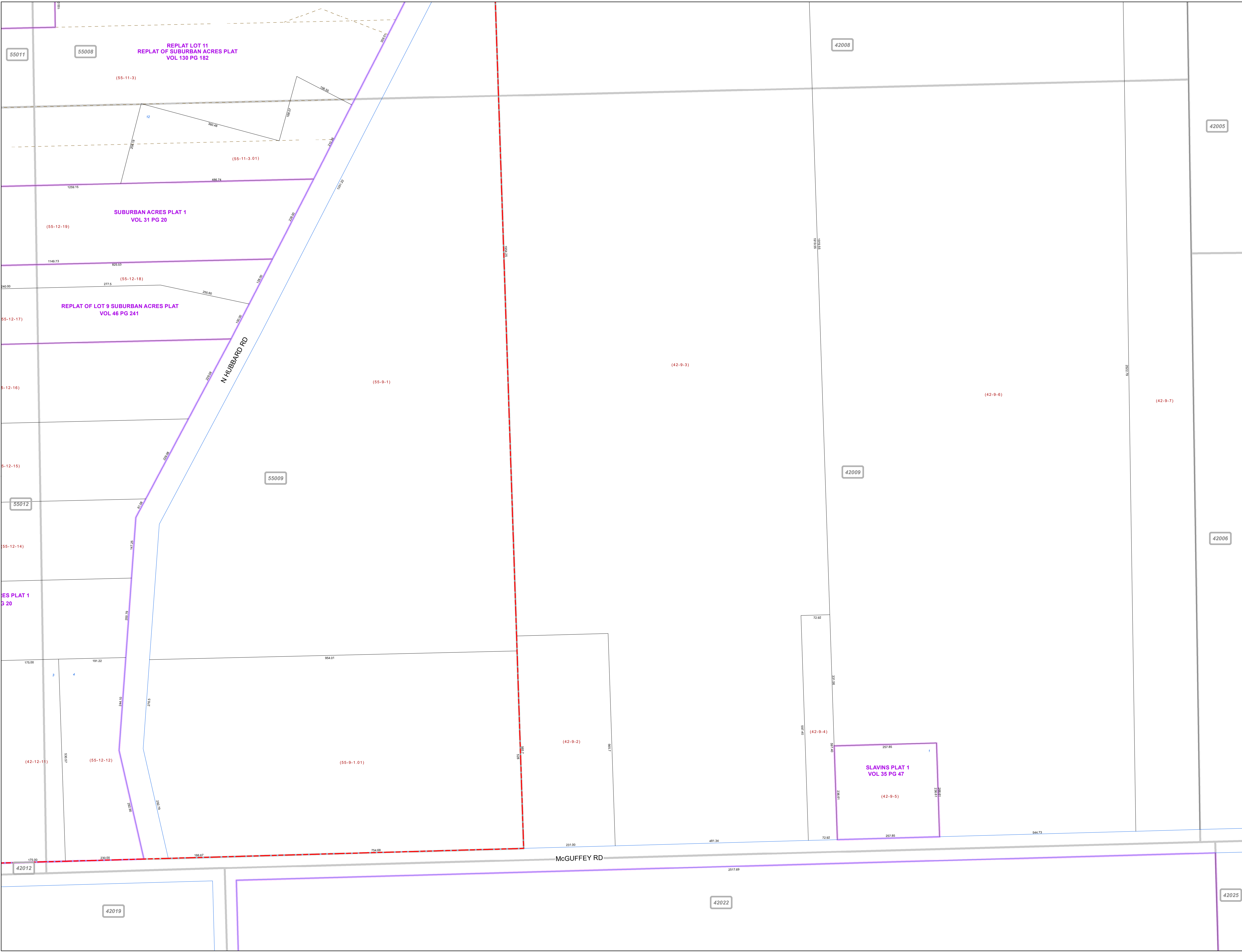
Print Date 12/31/2019

LEGEND

- COUNTY LINE
- TOWNSHIP LINE
- CITY LINE
- VILLAGE LINE
- PLAT OUTLINE
- PARCEL LINE
- OLD PARCEL LINE
- PHASE LINE
- ROAD ROW LINE
- RAILROAD ROW LINE
- (01-20-1.03) PARCEL ID NUMBER
- 345 LOT NUMBER
- BELL PLAT 1 PLAT NAME
- 01004 TAX MAP NUMBER

COITSVILLE TOWNSHIP
Index Map

42010	55007	42004
42011	55008	42005
42012	55009	42006
42019	42022	42025



42005

42008

55011

55008

55009

42009

42006

55012

42012

42019

42022

42025

REPLAT LOT 11
 REPLAT OF SUBURBAN ACRES PLAT
 VOL 130 PG 182

SUBURBAN ACRES PLAT 1
 VOL 31 PG 20

REPLAT OF LOT 9 SUBURBAN ACRES PLAT
 VOL 46 PG 241

SLAVINS PLAT 1
 VOL 35 PG 47

N HUBBARD RD

McGUFFEY RD

(55-11-3)

(55-11-3.01)

(55-12-19)

(55-12-18)

(55-12-17)

(55-12-16)

(55-12-15)

(55-12-14)

ES PLAT 1
 3 20

(42-12-11)

(55-12-12)

(55-9-1.01)

(42-9-2)

(42-9-4)

(42-9-5)

(42-9-3)

(42-9-6)

(42-9-7)