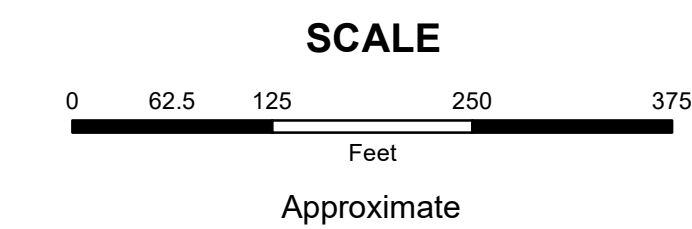
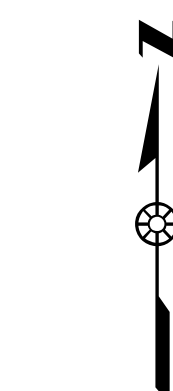


MAHONING COUNTY
OHIO
CANFIELD TOWNSHIP
Great Lot 15 Division 4

TAX MAP
26046

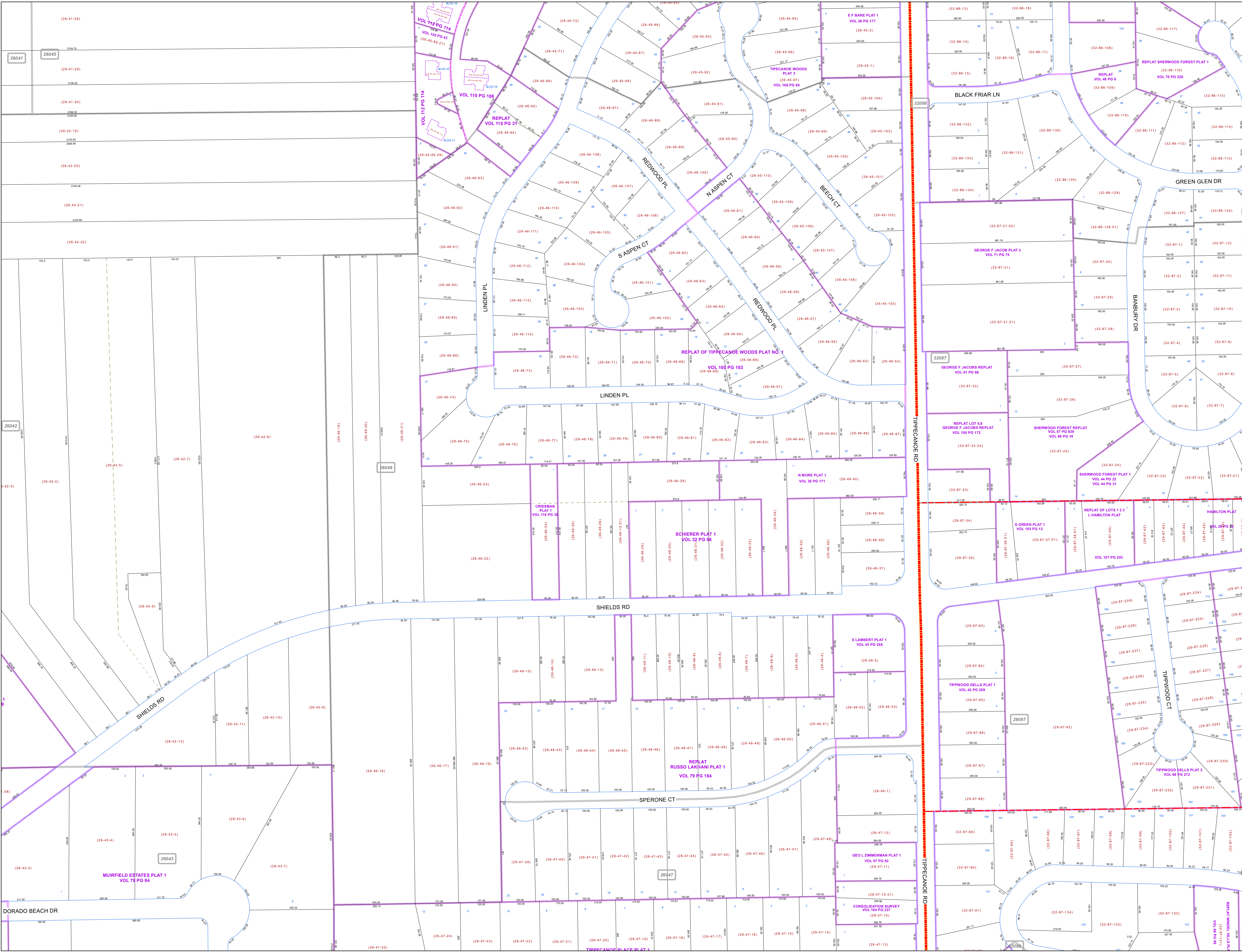
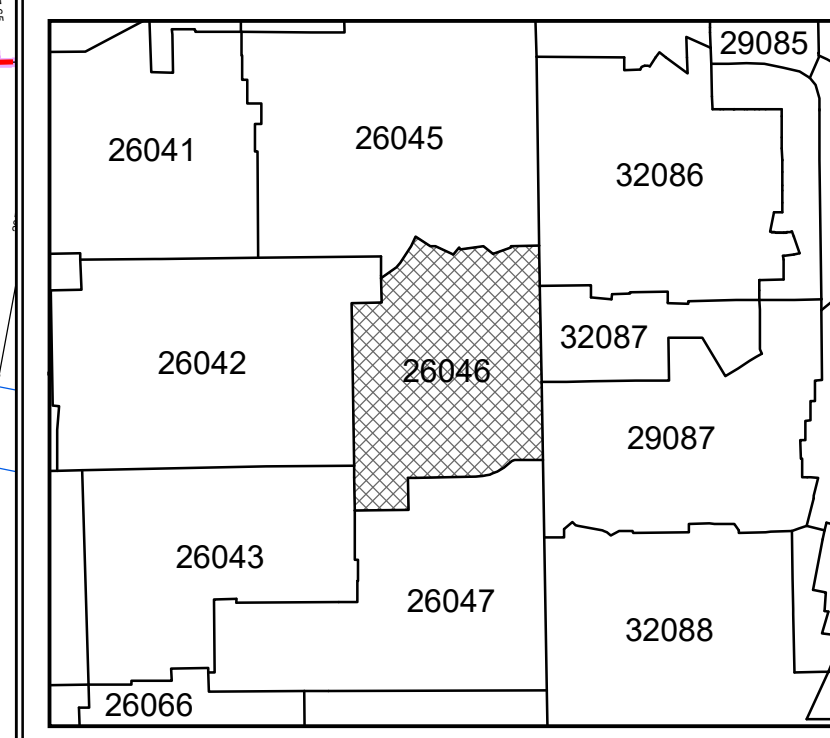


Print Date 12/31/2019

LEGEND

- COUNTY LINE
- TOWNSHIP LINE
- CITY LINE
- VILLAGE LINE
- PLAT OUTLINE
- PARCEL LINE
- OLD PARCEL LINE
- PHASE LINE
- ROAD ROW LINE
- RAILROAD ROW LINE
- PARCEL ID NUMBER
- LOT NUMBER
- PLAT NAME
- TAX MAP NUMBER

CANFIELD TOWNSHIP
Index Map



26041 26045

VOL 112 PG 114
 VOL 120 PG 43
 (26-45-89 27)

VOL 110 PG 186
 REPLAT VOL 115 PG 31

VOL 112 PG 114
 VOL 120 PG 43
 (26-45-89 27)

VOL 110 PG 186
 REPLAT VOL 115 PG 31

VOL 112 PG 114
 VOL 120 PG 43
 (26-45-89 27)

VOL 110 PG 186
 REPLAT VOL 115 PG 31

VOL 112 PG 114
 VOL 120 PG 43
 (26-45-89 27)

VOL 110 PG 186
 REPLAT VOL 115 PG 31

VOL 112 PG 114
 VOL 120 PG 43
 (26-45-89 27)

VOL 110 PG 186
 REPLAT VOL 115 PG 31

VOL 112 PG 114
 VOL 120 PG 43
 (26-45-89 27)

VOL 110 PG 186
 REPLAT VOL 115 PG 31

VOL 112 PG 114
 VOL 120 PG 43
 (26-45-89 27)

VOL 110 PG 186
 REPLAT VOL 115 PG 31

VOL 112 PG 114
 VOL 120 PG 43
 (26-45-89 27)

26042

26046

26043

26047

26044

26048

26049

26050

26051

26052

26053

26054

26055

26056

26057

26058

DORADO BEACH DR

SHIELDS RD

SHIELDS RD

SPERONE CT

GEO L ZIMMERMAN PLAT 1
 VOL 57 PG 82
 (26-47-11)

CONSOLIDATION SURVEY
 VOL 104 PG 237
 (26-47-10)

REPLAT VOL 106 PG 237
 (26-47-10)

REPLAT VOL 106 PG 237
 (26-47-10)

REPLAT VOL 106 PG 237
 (26-47-10)

REPLAT VOL 106 PG 237
 (26-47-10)

REPLAT VOL 106 PG 237
 (26-47-10)

REPLAT VOL 106 PG 237
 (26-47-10)