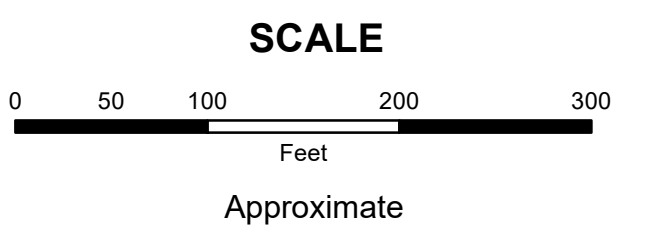


**MAHONING COUNTY  
OHIO**  
**CANFIELD TOWNSHIP**  
Great Lot 10, 9 Division 4

**TAX MAP  
26033**

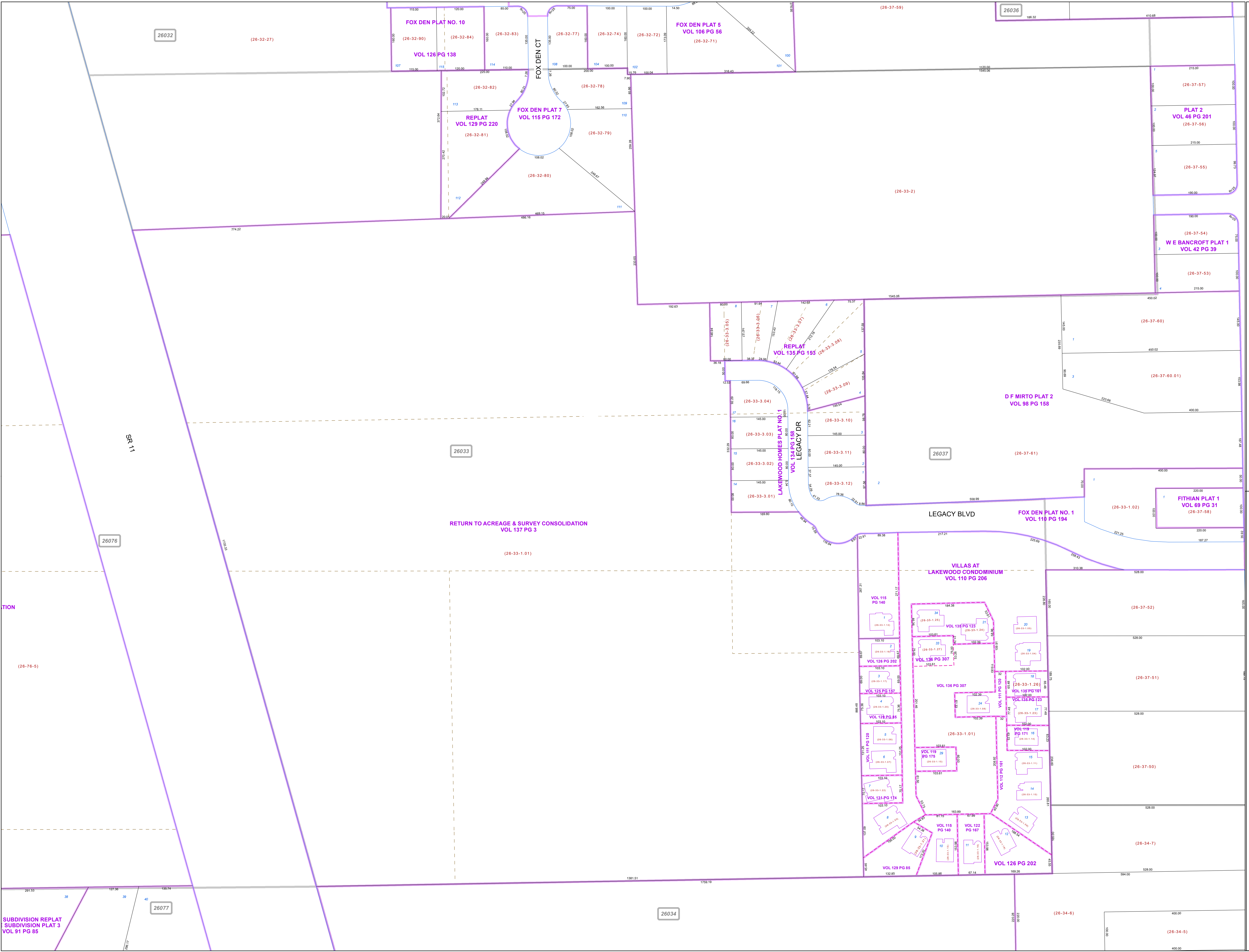
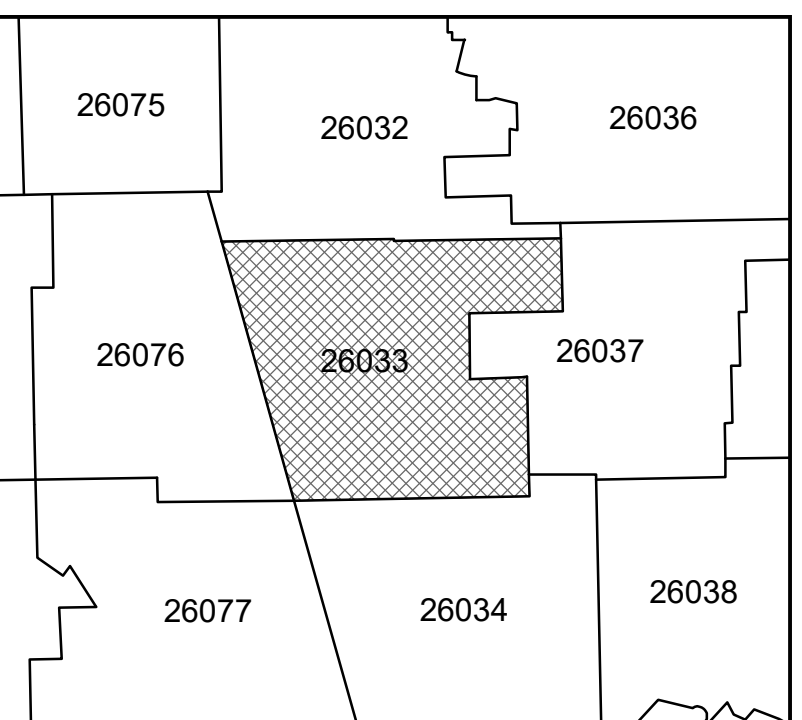


Print Date 12/31/2019

**LEGEND**

- COUNTY LINE
- TOWNSHIP LINE
- CITY LINE
- VILLAGE LINE
- PLAT OUTLINE
- PARCEL LINE
- OLD PARCEL LINE
- PHASE LINE
- ROAD ROW LINE
- RAILROAD ROW LINE
- PARCEL ID NUMBER
- LOT NUMBER
- PLAT NAME
- TAX MAP NUMBER

**CANFIELD TOWNSHIP  
Index Map**



SUBDIVISION REPLAT  
SUBDIVISION PLAT 3  
VOL 91 PG 85