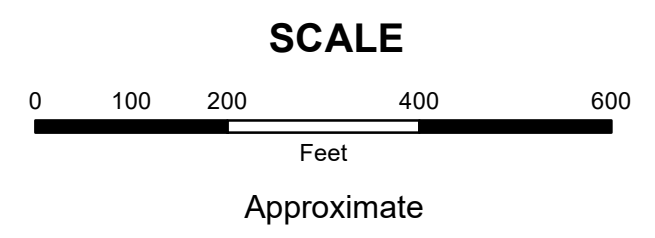
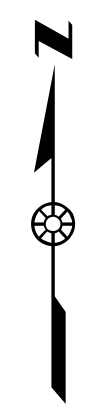


**MAHONING COUNTY
OHIO**
BERLIN TOWNSHIP
Great Lot 36, 37, 42, 43 Tract 1

**TAX MAP
22043**



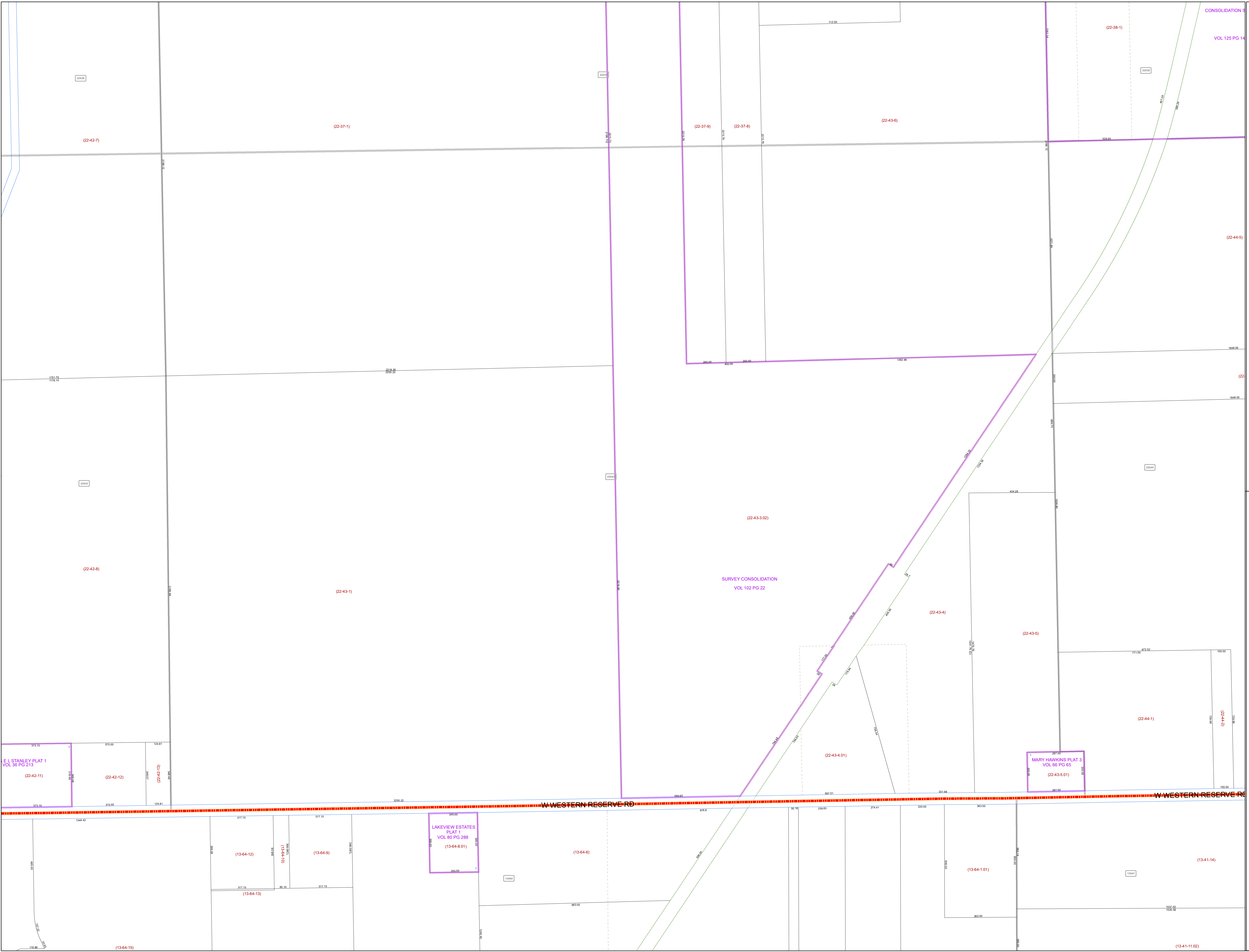
Print Date 12/31/2019

LEGEND

- COUNTY LINE
- TOWNSHIP LINE
- CITY LINE
- VILLAGE LINE
- PLAT OUTLINE
- PARCEL LINE
- OLD PARCEL LINE
- PHASE LINE
- ROAD ROW LINE
- RAILROAD ROW LINE
- (01-20-1.03) PARCEL ID NUMBER
- 345 LOT NUMBER
- BELL PLAT 1 PLAT NAME
- 01004 TAX MAP NUMBER

**BERLIN TOWNSHIP
Index Map**

22030	22031	
22036	22037	22038
22042	22043	22044
16208	13064	13041
16209	13063	13042



E.L. STANLEY PLAT 1
VOL 35 PG 213
(22-42-11)

MARY HAWKINS PLAT 3
VOL 86 PG 65
(22-43-5.01)

LAKEVIEW ESTATES
PLAT 1
VOL 80 PG 288
(13-64-8.01)