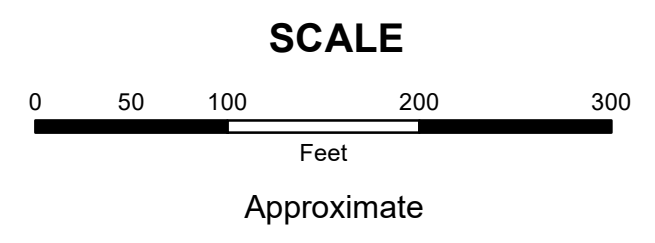


MAHONING COUNTY
OHIO
SMITH TOWNSHIP
Section 32
TAX MAP
19039



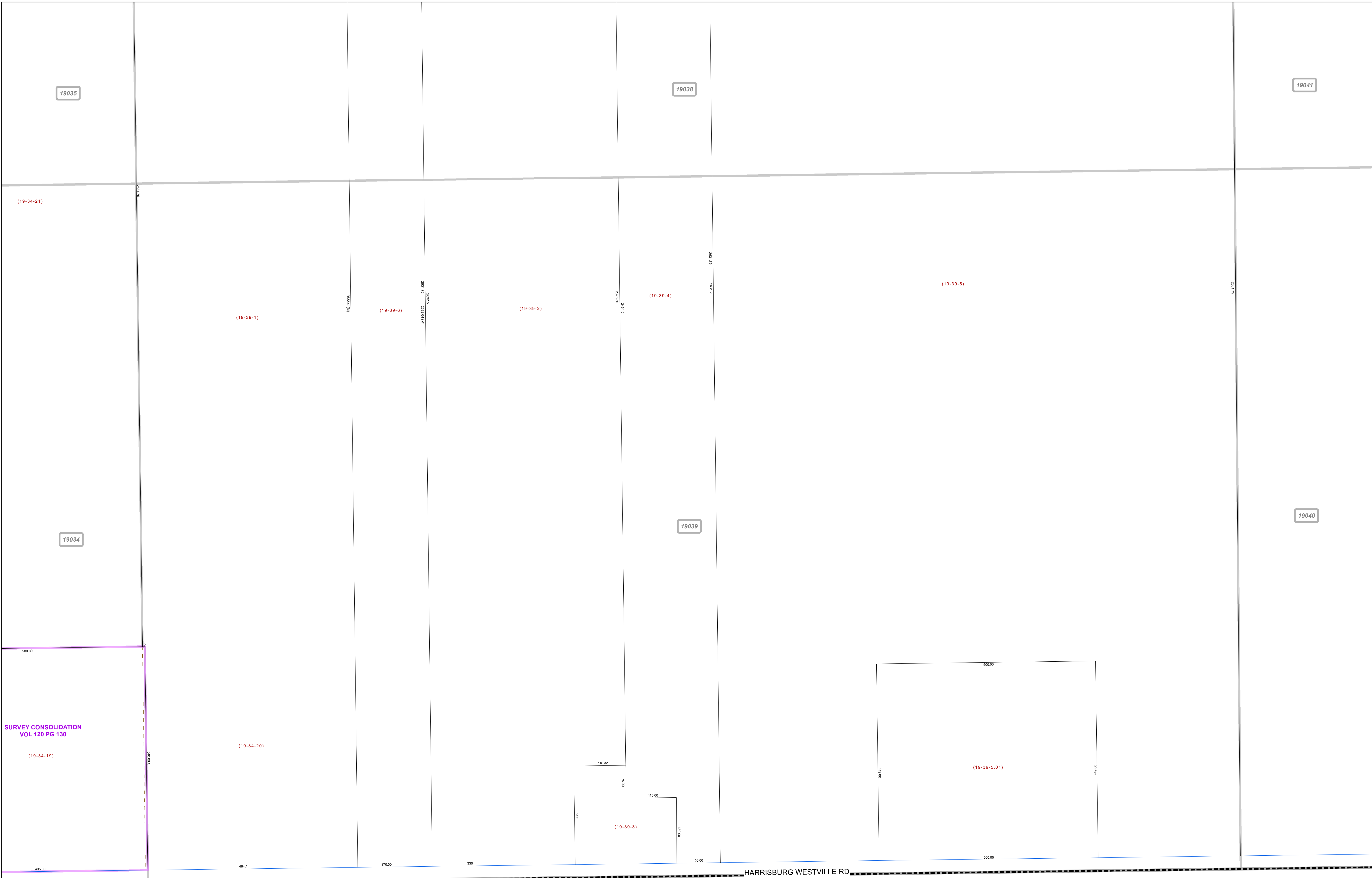
Print Date 12/31/2019

LEGEND

- COUNTY LINE
- TOWNSHIP LINE
- CITY LINE
- VILLAGE LINE
- PLAT OUTLINE
- PARCEL LINE
- OLD PARCEL LINE
- PHASE LINE
- ROAD ROW LINE
- RAILROAD ROW LINE
- (01-20-1.03) PARCEL ID NUMBER
- 345 LOT NUMBER
- BELL PLAT 1 PLAT NAME
- 01004 TAX MAP NUMBER

SMITH TOWNSHIP
Index Map

19035	19038	16041
		19041
19034	19039	19040



COLUMBIANA COUNTY