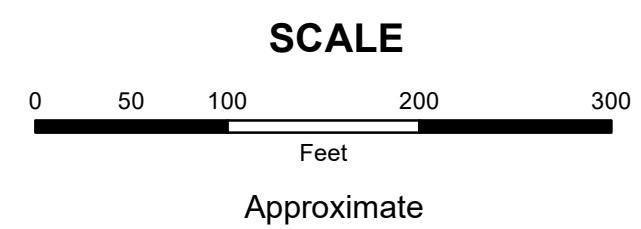


MAHONING COUNTY
OHIO
SMITH TOWNSHIP
 Section 30

TAX MAP
19029

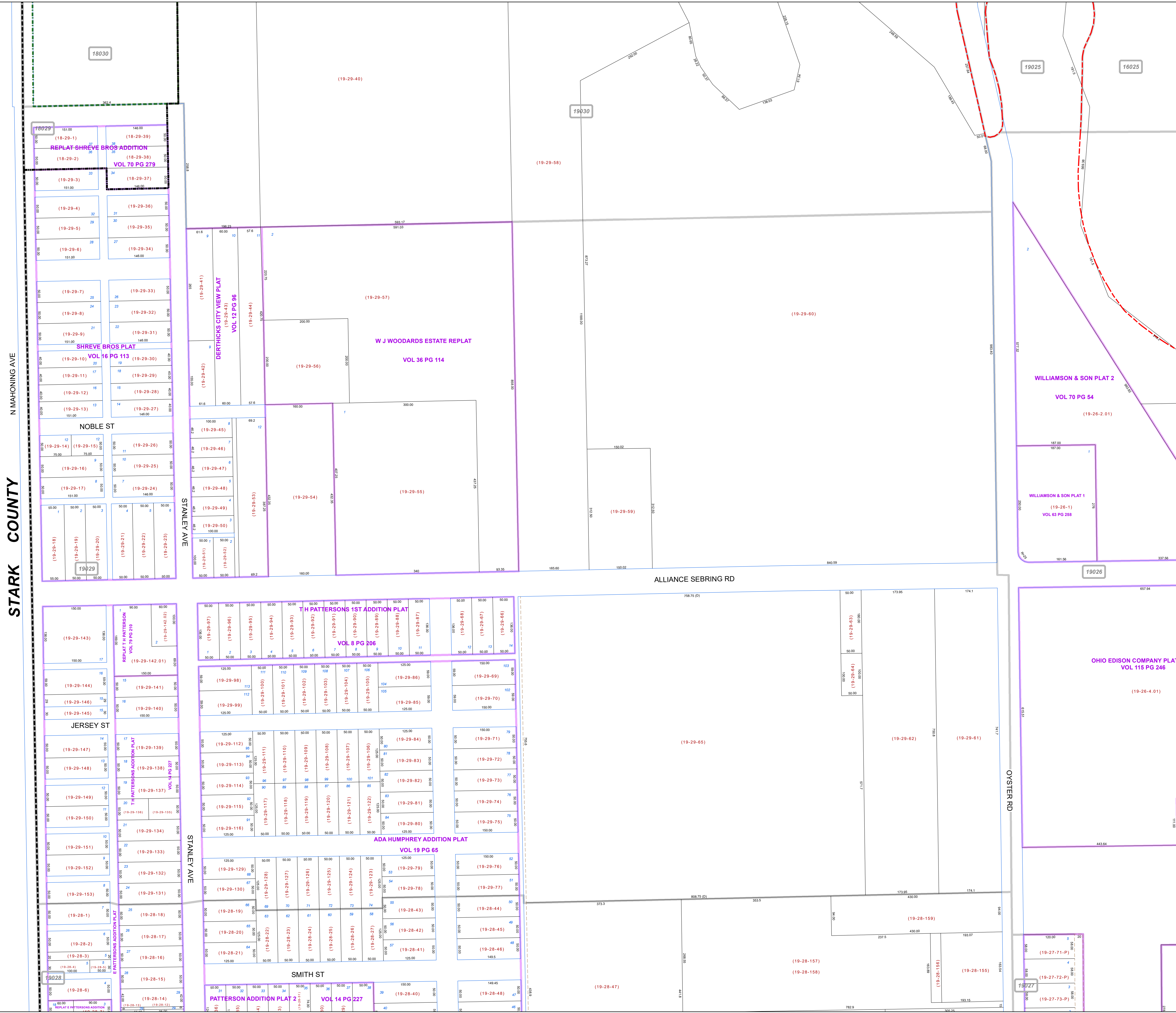
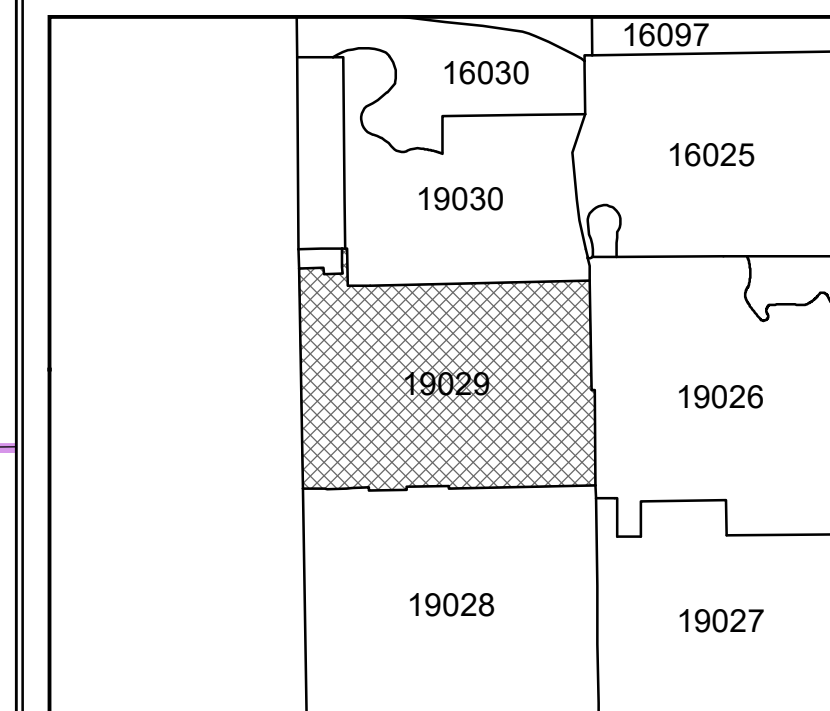


Print Date 12/31/2019

LEGEND

- COUNTY LINE
- TOWNSHIP LINE
- CITY LINE
- VILLAGE LINE
- PLAT OUTLINE
- PARCEL LINE
- OLD PARCEL LINE
- PHASE LINE
- ROAD ROW LINE
- RAILROAD ROW LINE
- (01-20-1.03) PARCEL ID NUMBER
- 345 LOT NUMBER
- BELL PLAT 1** PLAT NAME
- 01004 TAX MAP NUMBER

SMITH TOWNSHIP
Index Map



STARK COUNTY

N MAHONING AVE

18030

19030

19025

16025

REPLAT SHREVE BROS ADDITION
VOL 70 PG 279

SHREVE BROS PLAT
VOL 16 PG 113

NOBLE ST

STANLEY AVE

DERRICKS CITY VIEW PLAT
VOL 12 PG 96

W J WOODARDS ESTATE REPLAT
VOL 36 PG 114

ALLIANCE SEBRING RD

WILLIAMSON & SON PLAT 2
VOL 70 PG 54

WILLIAMSON & SON PLAT 1
VOL 65 PG 258

19026

REPLAT T H PATTERSON
VOL 79 PG 210

TH PATTERSONS 1ST ADDITION PLAT
VOL 8 PG 206

ADA HUMPHREY ADDITION PLAT
VOL 19 PG 65

SMITH ST

PATTERSON ADDITION PLAT 2
VOL 14 PG 227

OHIO EDISON COMPANY PLAT
VOL 115 PG 246

19027