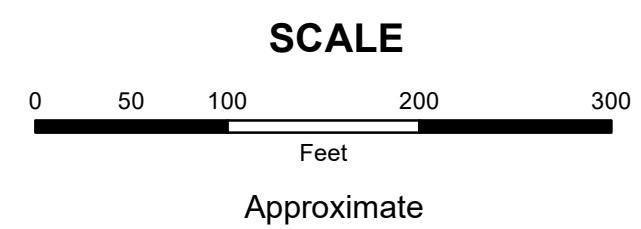


MAHONING COUNTY
OHIO
SMITH TOWNSHIP
 Section 31

TAX MAP
18031



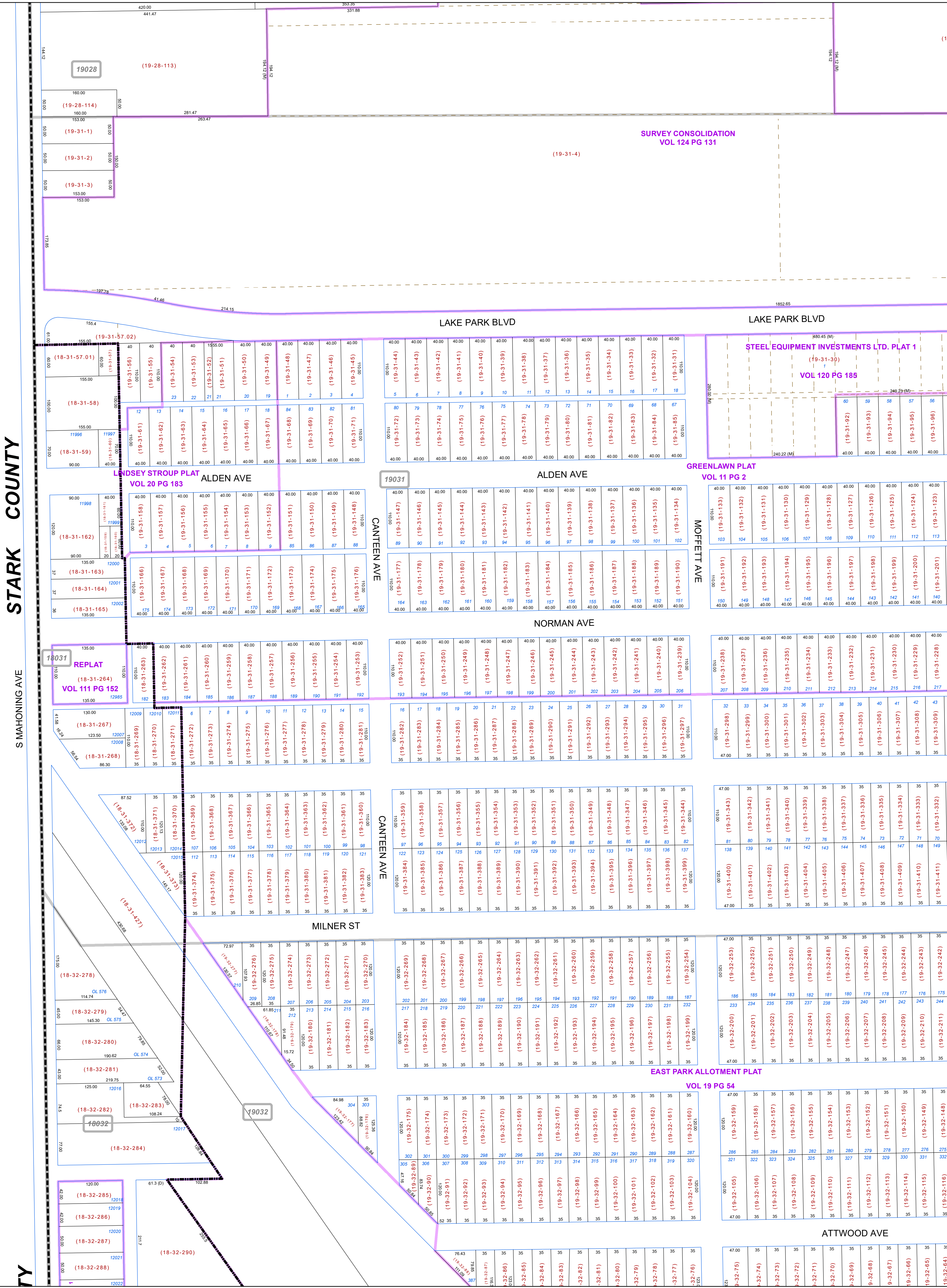
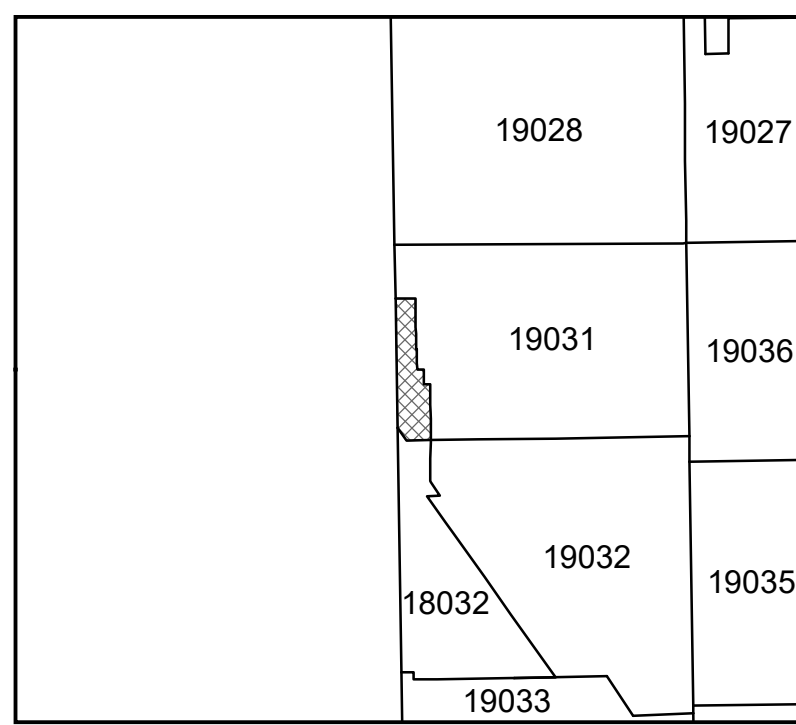
Print Date 12/31/2019

LEGEND

- COUNTY LINE
- TOWNSHIP LINE
- CITY LINE
- VILLAGE LINE
- PLAT OUTLINE
- PARCEL LINE
- OLD PARCEL LINE
- PHASE LINE
- ROAD ROW LINE
- RAILROAD ROW LINE

- (01-20-1.03) PARCEL ID NUMBER
- 345 LOT NUMBER
- BELL PLAT 1 PLAT NAME
- 01004 TAX MAP NUMBER

SMITH TOWNSHIP
Index Map



STARK COUNTY

MAHONING AVE

TY