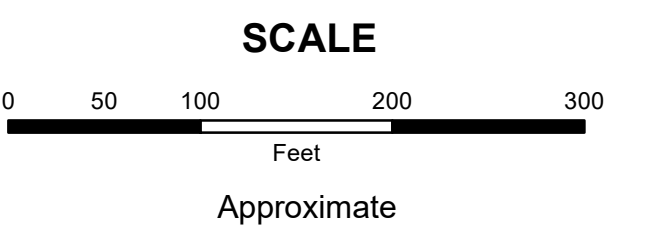


PORTAGE COUNTY

MAHONING COUNTY
OHIO
SMITH TOWNSHIP
Section 2

TAX MAP
16201



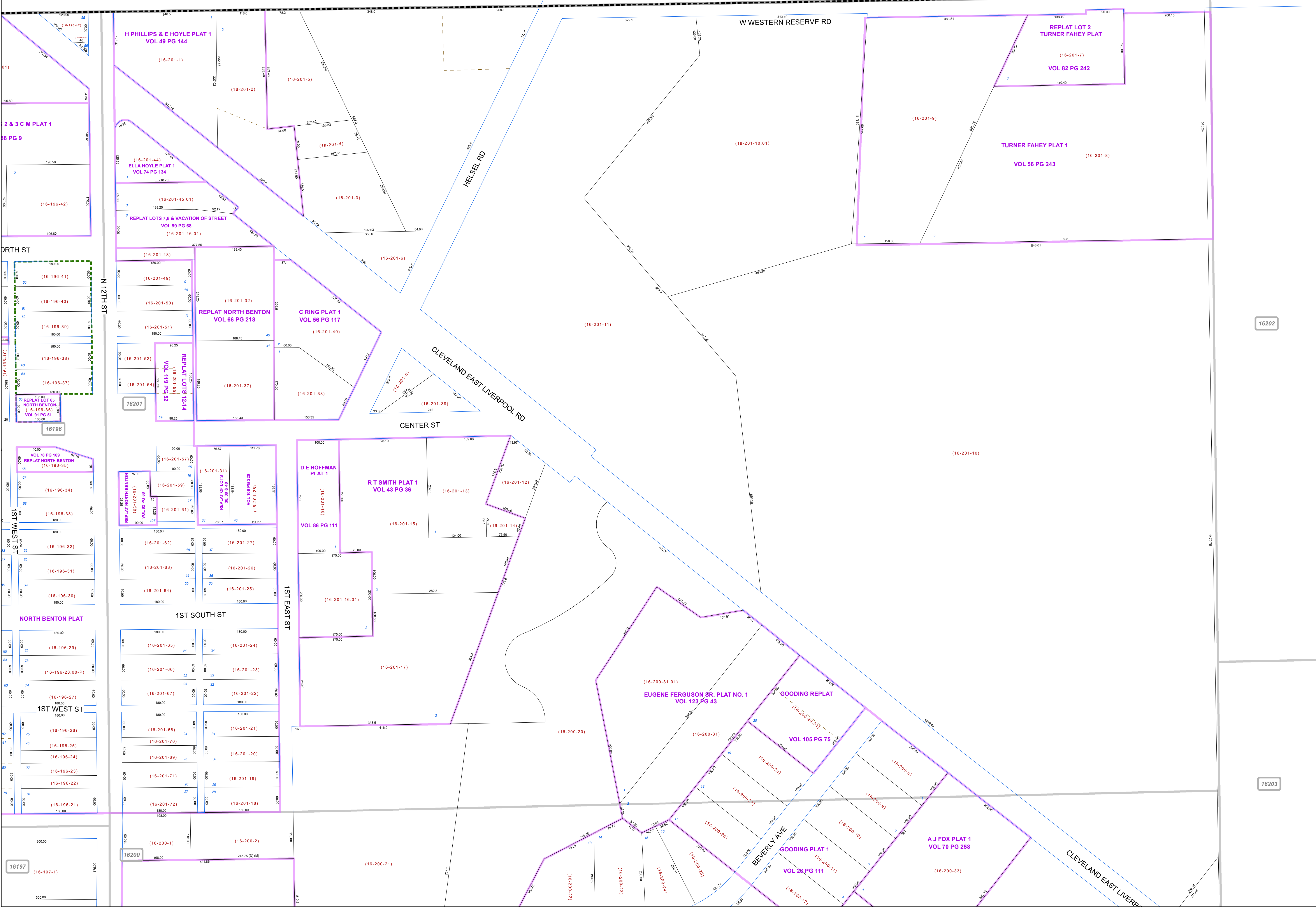
Print Date 12/31/2019

LEGEND

- COUNTY LINE
- TOWNSHIP LINE
- CITY LINE
- VILLAGE LINE
- PLAT OUTLINE
- PARCEL LINE
- OLD PARCEL LINE
- PHASE LINE
- ROAD ROW LINE
- RAILROAD ROW LINE
- PARCEL ID NUMBER
- LOT NUMBER
- PLAT NAME
- TAX MAP NUMBER

SMITH TOWNSHIP
Index Map

		22041
16196	16201	16202
16197	16200	16203
16198	16199	16204



16202

16203

16201

16200

16196

16197

DRTH ST

N 12TH ST

1ST WEST ST

NORTH BENTON PLAT

1ST SOUTH ST

1ST EAST ST

2 & 3 C M PLAT 1
88 PG 9

H PHILLIPS & E HOYLE PLAT 1
VOL 49 PG 144

ELLA HOYLE PLAT 1
VOL 74 PG 134

REPLAT LOTS 7, 8 & VACATION OF STREET
VOL 99 PG 68

REPLAT LOTS 12-14
VOL 119 PG 82

REPLAT LOT 65
NORTH BENTON
VOL 91 PG 81

VOL 78 PG 189
REPLAT NORTH BENTON
VOL 156 PG 35

REPLAT NORTH BENTON
VOL 55 PG 68

REPLAT OF LOTS 15 & 16
VOL 108 PG 220

REPLAT OF LOTS 17 & 18
VOL 108 PG 220

D E HOFFMAN PLAT 1
VOL 86 PG 111

RT SMITH PLAT 1
VOL 43 PG 36

EUGENE FERGUSON SR. PLAT NO. 1
VOL 123 PG 43

GOODING REPLAT
VOL 105 PG 76

GOODING REPLAT 1
VOL 28 PG 111

A J FOX PLAT 1
VOL 70 PG 258

REPLAT LOT 2
TURNER FAHEY PLAT
VOL 82 PG 242

TURNER FAHEY PLAT 1
VOL 56 PG 243